

03 History



- 2020
 - 9. 24 Inauguration of the 16th President, Yookyong Mun
- 2007
 - 5. 11 Korean name of the institute changed from 'Women's Development Institute' to 'Korean Women's Policy Institute'
- 2005
 - 7. 1 Placed under the supervision of the National Research Council for Economics, Humanities, and Social Sciences
- 1999
 - 1. 29 Placed under the supervision of the National Research Council for Humanities and Social Sciences
- 1998
 - 2. 28 Placed under the supervision of the Presidential Commission on Women's Affairs
- 1995
 - 9. 28 Opening of the Common Forum for Women (annex building)
- 1991
 - 4. 18 Placed under the supervision of the Ministry of Political Affairs (II)
- 1987
 - 11. 20 Opening of the institute complex
- 1983
 - 4. 21 Establishment of the institute
 - 3. 14 Announcement of the Enforcement Ordinance of the KWDI Act
- 1982
 - 12. 31 Enactment and announcement of the Korean Women's Development Institute (KWDI) Act

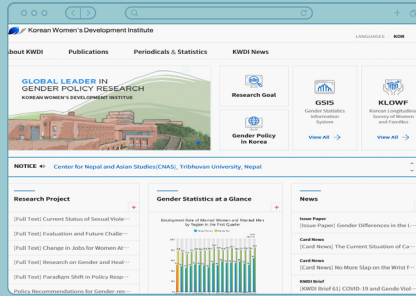
Services

Korean Women's Development Institute's website provides various information such as our research reports, publications, news and research trend.

English Website(<https://www.kwdi.re.kr>)



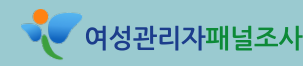
Korean Website(<https://eng.kwdi.re.kr>)



<https://gsis.kwdi.re.kr/gsis>



<https://klofw.kwdi.re.kr>



<https://kwmp.kwdi.re.kr/>

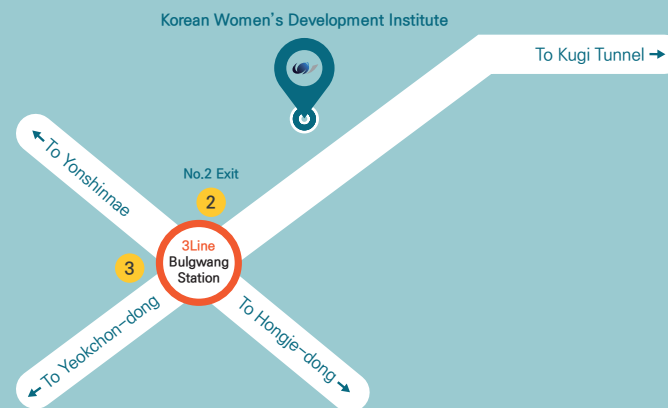
[KWDI SNS]

Facebook : <https://www.facebook.com/kwdipage>

Youtube : <https://www.youtube.com/kwdi2010>

Blog : <https://blog.naver.com/kwdi1983>

Direction



225 Jinheung-ro, Eunpyeong-gu, Seoul, 122-707, Korea
Tel. 82-2-3156-7000 / Fax. 82-2-3156-7007



<https://eng.kwdi.re.kr>

Korean Women's Development Institute



Leading an Inclusive Society



Korean Women's Development Institute

Message



Greetings!

Korean Women's Development Institute(KWDI) is a government think-tank dedicated for gender and family research in South Korea. We provide research and recommendations for establishing national gender equality policies.

With this mandate, KWDI strives to support the successful implementation of gender policies in South Korean society, by developing various policy agenda and carrying out data-based gender research that incorporates gender perspectives of all ministries.

As a global gender research institute leading a inclusive society in a rapidly changing social environment, KWDI will continue to conduct various research to achieve gender mainstreaming in Korean society.

We look forward to your encouragement and support.

Yookyong Mun
The 16th President of the Korean Women's Development Institute

02 Vision and Goals



Vision

To become a global gender equality research institute, leading an inclusive society

Mission

To contribute to the establishment of national gender equality policies for realization of gender-equal society and to the enhancement of citizen happiness

Goals

Expand the horizon of future-leading gender research

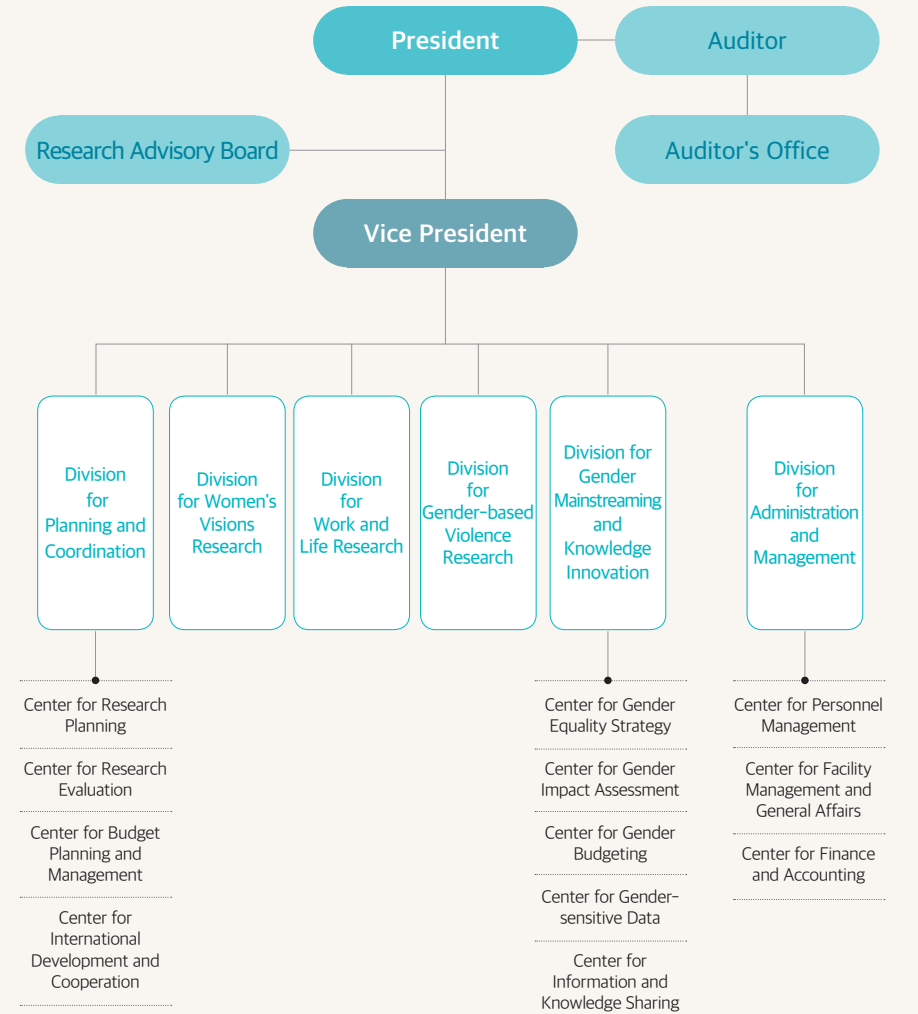
Innovate research management system through knowledge management

Establish a sustainable management innovation system

Strategies

- Restructuring of labor and family policies during the post-COVID 19 digital transformation era
- Promotion of gender equality for future generation and expansion of policy areas to respond to gender violence
- Reinforcement of basic research for effective implementation of gender mainstreaming
- Reinforcement of virtuous cycle of research planning for policy consumers
- Innovation of research process through knowledge information sharing
- Strengthening the hub function of gender research
- Establishment of fair and transparent management system
- Creation of change-driven organizational culture

03 Organization



Publications

