



**2021  
2022**

# **Annual Report**

Korean Women's Development Institute



**KWDI**

Korean Women's Development Institute



# contents

<u>04</u>	I. Introduction
<u>08</u>	II. 2021 Major Research Activities
<u>16</u>	III. 2022 Major Research Activities
<u>21</u>	IV. KWDI's Publications



**KWDI**

## Preface



Korean Women's Development Institute (KWDI) is a professional think-tank dedicated for gender policies, and since its establishment in 1983, KWDI has endeavored to establish gender equality and to enhance the well-being of the people.

Every year, KWDI publishes an annual report to disseminate research results and to provide information on research trends. The 2021-2022 Annual Report introduces major research activities of 2021 aimed at policy design for a successful transition of Gender Equality policies, prospects for gender agenda in future society and development of tasks for gender-sensitive policies, and expansion of data-driven policy research for practical implementation of gender policies.

The report also includes new research areas to be pursued in 2022, targeted at restructuring policies for post-COVID, digital transition, and for labor and family, as well as expansion of gender equality in future generation, enlarged policy areas for responding to gender violence, strengthening comprehensive research for effective gender mainstreaming, and development of perspective on new paradigm in women's policy.

KWDI will continue to support the expansion of leading gender research to a new horizon, innovation in the life-cycle research management system via knowledge management, and building a sustainable and innovative management system.

We look forward to your encouragement and support. Thank you.

**Yookyung Mun**  
**President of the Korean Women's Development Institute**

A stylized, handwritten signature in black ink that reads 'Munyh'.



# I. Introduction

05 Mission and History

06 Vision and Goals

07 Organization



KWDI

## ■ Mission

To contribute to the establishment of national gender equality policies for realization of gender-equal society and to the enhancement of citizen happiness.

## ■ History

### 2020

---

2020. 09. 24 Inauguration of the 16th President, Yookyong Mun

### 2010

---

2017. 12. 01 Certified 'Family-friendly Corporation' by the Ministry of Gender Equality and Family

2013. 04. 21 30<sup>th</sup> Anniversary

2012. 05. 10 Designated as 'Center for Gender Impact Assessment' by the Ministry of Gender Equality and Family

### 2000

---

2008. 05. 10 Designated as 'Institute for Assistance on Policy Analysis and Evaluation' by the Ministry of Gender Equality

2007. 05. 11 Korean name of the institute changed from 'Women's Development Institute' to 'Korean Women's Policy Institute'

2005. 07. 01 Placed under the supervision of the National Research Council for Economics, Humanities, and Social Sciences

### 1990

---

1999. 01. 29 Placed under the supervision of the National Research Council for Humanities and Social Sciences

1998. 02. 28 Placed under the supervision of the Presidential Commission on Women's Affairs

1995. 09. 28 Opening of the Common Forum for Women (annex building)

1991. 04. 18 Placed under the supervision of the Ministry of Political Affairs (II)

### 1980

---

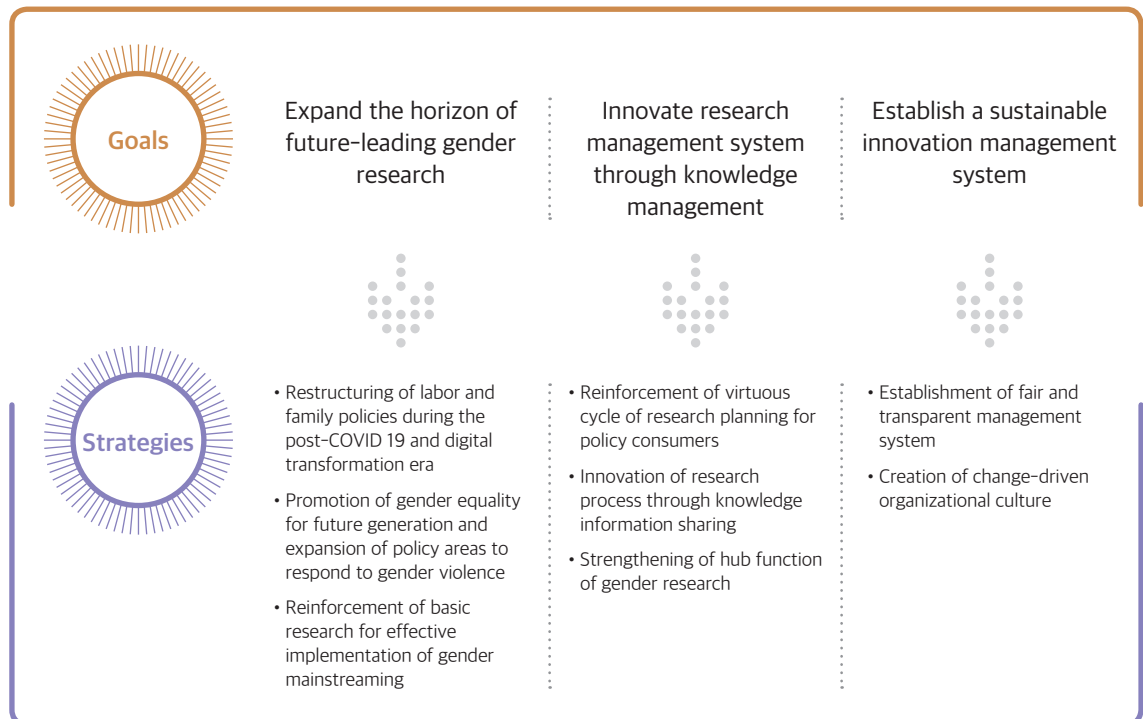
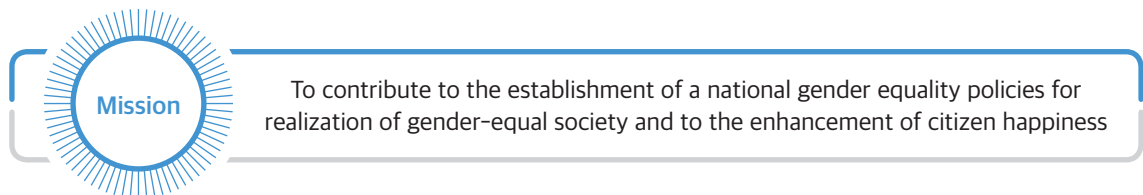
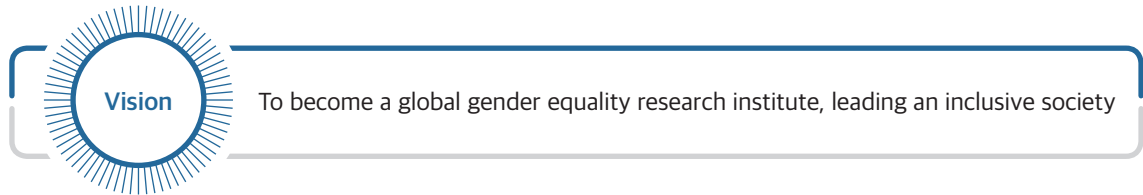
1987. 11. 20 Opening of the institute complex

1983. 04. 21 Establishment of the institute

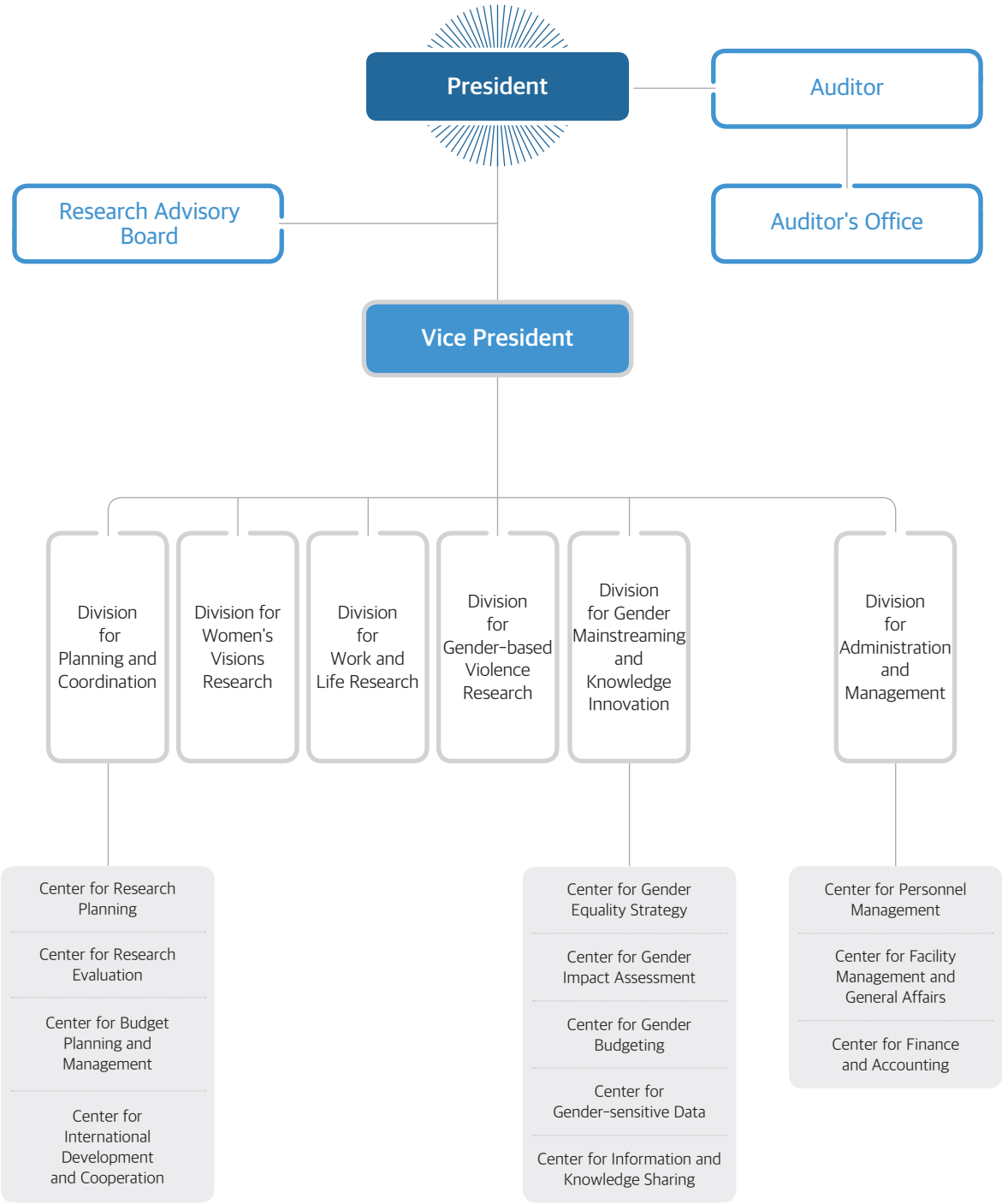
1983. 03. 14 Announcement of the Enforcement Ordinance of the KWDI Act

1982. 12. 31 Enactment and announcement of the Korean Women's Development Institute (KWDI) Act

## Vision and Goals



# Organization





# II. 2021 Research Activities

09 Priority Research Projects

10 Research Projects

13 Dissemination Activities



KWDI



## Priority Research Projects

Number	Title	Project Manager
1	<b>Ways of Legislative Improvement in Response to Technology-Facilitated Sexual Violence</b>	Jeonghye Kim, Associate Research Fellow
	<ul style="list-style-type: none"> <li>Based on the recognition that technology-facilitated sexual violence is possible on the basis of dual sexual norms stipulated from gender discrimination, stigmatization of female victims, and a culture that consumes women sexually, this study wishes to review the limitations of current laws. Then analyze the characteristics of technology-facilitated sexual violence and continuously changing crime patterns to derive measures to improve the legal system to strengthen proactive intervention, punishment and victim support</li> </ul>	
2	<b>A study on the Gender Awareness and Attitude of Youths through Peer Culture(II): Focusing on Digital Contents and Online Culture</b>	Yunjeong Choi, Research Fellow
	<ul style="list-style-type: none"> <li>Analyzing the online cultural phenomena and characteristics of adolescent generations from the perspective of gender equality, identifying the geography of gender role perceptions and attitudes of these generations in more detail, and discovering implications for adolescent policies</li> </ul>	
3	<b>Evaluation of the National Dementia Policy from a Gender Perspective: How to Mainstream "Care" into the Dementia Policy Framework</b>	Gawon Chung, Research Fellow
	<ul style="list-style-type: none"> <li>Diagnose the state of dementia national responsibility system operation and its limitations through gender perspective, focusing on the dementia elderly, their families, public dementia care service providers and workers. In addition, based on the analysis results, suggest improvement directions and policy tasks to contribute to the "socialization of gender-equal care for the elderly with dementia"</li> </ul>	
4	<b>Research on Childcare Policy after Covid-19</b>	Young-Ran Kim, Research Fellow
	<ul style="list-style-type: none"> <li>On the premise that an infectious disease similar to Covid-19 can occur at any time, re-examine the direction and goals of the caring policies that have been pursued so far, and devise policy alternatives, as a result of the crisis that has been experienced for the first time in history</li> </ul>	
5	<b>Changes in Agriculture and Rural Areas and the Direction of Gender-Sensitive Policy</b>	Yi-Seon Kim, Research Fellow
	<ul style="list-style-type: none"> <li>Analyze status of gender equality amid changes in agriculture and rural areas. Also examine the relationship between the situation of the agricultural field and the gender structure that has changed rapidly since Covid-19. And present the importance and significance of realizing gender equal agriculture and rural areas</li> </ul>	
6	<b>Study on Women Job at a Time of Digital Transformation(II): Career Development and Social Protection System</b>	Seon-Mee Shin, Senior Research Fellow
	<ul style="list-style-type: none"> <li>Find ways to alleviate the concentration of low-wage and low-skilled jobs which is a structural problem in the era of digital transformation for women's labor market and monitor the implementation of continuous career development. And provide a new direction for establishing a social safety net for workers in gray areas of the future labor market</li> </ul>	
7	<b>A study on the Measures to Improve the Effective Implementation of Gender Impact Assessment in Central Government of Korea</b>	Yun-Young Nam-Gung, Associate Research Fellow
	<ul style="list-style-type: none"> <li>Identify issues in the operation of the gender impact assessment system through content analysis and system operation system analysis, and suggest ways to improve the system such as system reorganization</li> </ul>	

## Research Projects

### ■ Labor and Employment

Number	Title	Project Manager
1	A study on the Impact of the COVID19 Economic Crisis on the Female Labor Market, with Policy Suggestions	Sungmi Jung, Associate Research Fellow
2	A study on the Way for Businesses to Adopt the Gender Equality Disclosure System	Kitaek Jeon, Senior Research Fellow
3	Changing Industrial Structure and Employment of Women	Jongsoog Kim, Senior Research Fellow
4	The impact of the Maximum 52-hour Work Week on Female Workers and the Challenges Going Forward	Nanjue Kim, Associate Research Fellow
5	Redressing Systemic Employment Discrimination against Women in Korea	Miyoung Gu, Research Fellow
6	Study on Women Job at a Time of Digital Transformation( II ): Career Development and Social Protection System	Seon-Mee Shin, Senior Research Fellow
7	Ways of Inter-Korean Exchange and Cooperation for North Korean Women's Economic Empowerment(III)	Young-Ju Cho, Associate Research Fellow
8	Affirmative Action in Korea	Kyung Hee Ma, Research Fellow
9	A Study on Female Participation in the National Employment Support System and Suggestions for Improving the Female Employment Service System	Sungmi Jung, Associate Research Fellow

### ■ Representation, Gender-equal Culture-Awareness

Number	Title	Project Manager
1	A study on the Women's underrepresentation of Mayorship in Local Government with a perspective of Gender Justice	Eun Kyung Kim, Research Fellow
2	A study on the Gender Awareness and Attitude of Youths through Peer Culture( II ): Focusing on Digital Contents and Online Culture	Yunjeong Choi, Research Fellow
3	Strategic Projects for Gender Equality 2021: The Dissemination of Gender Equality Agendas for a Sustainable Society	Wonjung Kim, Associate Research Fellow
4	Gender Equality Policy Response to 'Gender Conflict' among Young Population	Wonjung Kim, Associate Research Fellow

## Research Projects

### Family and Childcare

Number	Title	Project Manager
1	Research on Childcare Policy after Covid-19	Young-Ran Kim, Research Fellow
2	Evaluation of the National Dementia Policy from a Gender Perspective: How to Mainstream "Care" into the Dementia Policy Framework	Gawon Chung, Research Fellow

### Gender-based Violence and Safety

Number	Title	Project Manager
1	Ways of Legislative Improvement in Response to Technology-Facilitated Sexual Violence	Jeonghye Kim, Associate Research Fellow
2	The problem of Protecting Child and Youth Victims of Sexual Exploitation and Policy Response Measures: Focusing on the Transmission of Sexual Images and Videos	Mijeong Lee, Senior Research Fellow
3	Study on Ways for Legislation to Reinforce the Protection and Support of Stalking Victims.	Jeonghye Kim, Associate Research Fellow

### Health

Number	Title	Project Manager
1	Gender Cognitive Analysis and Improvement Tasks for Infertile Couple Support Policy in South Korea	Dongsik Kim, Senior Research Fellow
2	A Study of Improving Medical Access for Safe Abortion	Dongsik Kim, Senior Research Fellow

## Research Projects

### Gender Mainstreaming

Number	Title	Project Manager
1	Changes in Agriculture and Rural Areas and the Direction of Gender-Sensitive Policy	Yi-Seon Kim, Research Fellow
2	Ways of Inter-Korean Exchange and Cooperation for North Korean Women's Economic Empowerment(III)	Young-Ju Cho, Associate Research Fellow
3	Performance Evaluation and Policy Agenda of National Tasks on Gender Equality	Yoo Jin Choi, Research Fellow
4	Study on Vitalization of Gender Mainstreaming in the Office of Education	Dool-Soon Kim, Research Fellow
5	A study on the Measures to Improve the Effective Implementation of Gender Impact Assessment in Central Government of Korea	Yun-Young Nam-Gung, Associate Research Fellow
6	Analysis and Evaluation of Gender Budgeting in Korea	
	Ways to Strengthen the Function of Feedback in the Gender Responsive Budget Closing System	Soo-Bum Park, Research Fellow
	Ways to Link the In-depth Evaluation System and the Gender Budgeting System(III)	Hyo-Joo Kim, Associate Research Fellow
7	Operation of the Gender Budgeting Council and the Gender Budgeting Evaluation Committee	Sun-Joo Cho, Senior Research Fellow
8	2021 Operation of Gender Statistics System	Jae-seon Joo, Research Fellow
9	Gender Statistics in Korea	Chi-Seon Song, Researcher
10	A study Gender Statistics of The Ministry of Culture, Sports and Tourism	Jae-seon Joo, Research Fellow
11	Korean Longitudinal Survey of Women & Families: the 2021 Annual Report	Jae-seon Joo, Research Fellow
12	2021 Korean Women Manager Panel	Seung-hyun Lee, Associate Research Fellow
13	Gender Mainstreaming of Foreign Security Policy: The Case of Feminist Foreign Policy	Jiso Yoon, Associate Research Fellow

## Dissemination Activities

### ■ Signing of MOU

Number	Partners	Date	Activities
1	Korea Institute of Public Administration (KIPA), Korea Environmental Industry & Technology Institute (KEITI), Korean Institute for Gender Equality Promotion and Education (KIGEPE)	2021.4.	<ul style="list-style-type: none"> <li>Establishing a cooperative system for spreading social values</li> <li>Promotion of win-win strategy in areas of environmental conservation including carbon-neutral campaigns and regional environmental cleanup, support for vulnerable groups, and improvement measures</li> </ul>
2	Sentencing Commission of Korea	2021.10.	<ul style="list-style-type: none"> <li>Eradicating gender violence and creating gender equal society</li> <li>Joint research and symposium, exchange of information such as publications and policy materials, exchange of human resources for strengthening expertise and enhancing understanding</li> </ul>
3	UNESCO International Center for Water Security and Sustainable Management (i-WSSM)	2021.12.	<ul style="list-style-type: none"> <li>Spreading of agenda related to global water problem and gender equality due to climate change</li> <li>Joint research and academic opportunities, exchange of human resources for research and educational training, mutual exchange of research materials and publications</li> </ul>

### ■ Policy Forums for Gender Equality Promotion

Wave	Date	Forum Title	Host
124	5.10	Forum for Sexual and Reproductive Health and Right	KWDI, Ministry of Gender Equality and Family (MOGEF), ChounSook Jung (MP), Insook Kwon (MP)
125	7.28	Gender Issues and Future Challenges of the Basic Income System	KWDI, Institute for Inclusive Society
126	8.26	Differences in Gender Sensitivity and Future Challenges among the Young Population	KWDI
127	12.8	Change in Women's Jobs and Policy Issues in the Digital Transition Era	KWDI

## Dissemination Activities

### ■ Conferences, Seminars and Workshops

Wave	Date	Forum Title	Host
1	1.26	Public Hearing for Establishment of the 4th National Plan for Healthy Families	Ministry of Gender Equality and Family (MOGEF), KWDI
2	2.24	Seminar on Direction of Women Employment Policy	Ministry of Gender Equality and Family (MOGEF), KWDI
3	4.15	Seminar on Evaluation of 4.7. By-Election and Measures for the 6.1. Election	Korea Women Parliamentarian Network (KWPN), KWDI
4	4.20	[The 38th Anniversary Seminar] Crisis, Opportunity, and New Leap of Gender Equality in the Post-COVID Era	KWDI
5	4.29	[The 1st Gender and ODA Forum 2021] Feminist Foreign Policy and ODA	KWDI
6	5.4	Forum on the Korea Launch of World Population Report 2021	The Korean Parliamentary League on Children, Population and Environment (CPE), UNFPA, KWDI
7	5.24	[The 2nd Gender and ODA Forum 2021] Women's Peace and Security in East Asia and Europe: the National Action Plan of U.N. Security Council Resolution 1325	KWDI, Institute for Security and Development Policy (ISDP)
8	6.2	Discussion on Improvement of Gender Discrimination in Daily Life	Ministry of Gender Equality and Family (MOGEF), KWDI
9	7.21	[Korea-Vietnam Women Forum 2021] Digital Transformation and Woman: the Case of Vietnam and Korea	KWDI, Vietnam Women's Union
9-1	9.2	[Korean Peninsula International Peace Forum 2021] Sustainable Development of the Korean Peninsula and Inter-Korean Women's Cooperation	Ministry of Unification / KWDI
10	9.8	[The 3rd Gender and ODA Forum 2021] Current Status and Challenges of Gender in Afghanistan	KWDI
11	9.9	[The 31st Gender and Legislative Forum] Strengthening Systematic Measures to Promote Gender Equality Policy	KWDI
12	9.14	Family Diversity Forum 2021	The Presidential Committee on Ageing Society and Population Policy (PCASPP), KWDI
13	9.15	[Family Policy Forum 2021] Survey on Non-Marital Cohabitation and Policy Implications	Ministry of Gender Equality and Family (MOGEF), KWDI

## Dissemination Activities

Wave	Date	Forum Title	Host
14	9.16	Discussion on Enhancing the Effectiveness of Gender Budget	Ministry of Economy and Finance (MOFA), Ministry of Gender Equality and Family (MOGEF), Jungju Yoo (MP), Wontaeg Lee (MP), KWDI
15	9.30	[The 1st International Forum Celebrating the Commission on the Status of Women, CSW65] Better Reconstruction of Asia and Strengthening Women's Political Capacity (I): Gender Quota and Political Representation	KWDI
16	10.28	[2021 KWDI-ISDP Webinar] Current Status and Challenges in Humanitarian Crisis in North Korea: on the Vulnerability and Capacity of Women and Children	KWDI, ISDP
17	11.8	[KWDI-Sentencing Commission Joint Symposium] Gender Violence Crimes and Sentencing	KWDI, Sentencing Commission
18	11.17	The 1st Relay Forum on Gender Equality Policy in the Transition Era	KWDI
19	11.19	2021 Symposium on Korean Longitudinal Survey of Women & Families	KWDI
20	11.23	[The 32nd Gender and Legislative Forum commemorating Stalking Punishment Act] Task to Protect and Support Victims of Stalking	KWDI, ChounSook Jung (MP)
21	11.26	[16-day Campaign to Abolish Gender-based Violence] Online Gender-based Violence: How to Respond?	KWDI, Service culturel de l'Ambassade de France en Corée
22	11.26	Discussion to Spread Regional Gender Equality Policies	Ministry of Gender Equality and Family (MOGEF), Insook Kwon (MP) / KWDI
23	11.30	[The 13th Asia-Pacific Forum on Development and Gender] ICT and Empowerment of Women	KWDI
24	12.2	[2021 Gender Equality Foundation Forum] Current Status and Future Plans for Gender Impact Evaluation Policy Improvement	Ministry of Gender Equality and Family (MOGEF), KWDI
25	12.9	[The 2 <sup>nd</sup> International Forum Celebrating the Commission on the Status of Women, CSW65] Better Reconstruction of Asia and Strengthening Women's Political Capacity (II): Gender Quota and Political Representation in the Indo-Pacific Region	KWDI, Australian Embassy in Republic of Korea
26	12.9	[Academic Seminar on 2020 National Survey of Families] How Koreans Perceive Family: Change and Outlook	Ministry of Gender Equality and Family (MOGEF), KWDI, Korean Family Studies Association / KWDI
27	12.22	The 2 <sup>nd</sup> Relay Forum on Gender Equality Policy in the Transition Era	KWDI



# III. 2022 Research Activities

- 17 Research Goals and Directions
- 18 Priority Research Projects
- 19 Research Projects



KWDI



## Research Goals and Directions

### Research Goals

- 
- Restructuring policies for Post-COVID, digital transition, labor and family
- 
- Expansion of gender equality in future generation and enlarged policy areas for responding to gender violence
- 
- Strengthening comprehensive research for effective gender mainstreaming
- 

### Research Directions

Restructuring policies for post-COVID, digital transition, labor and family	<ul style="list-style-type: none"> <li>• Leading the shift in women's labor policy after COVID-19</li> <li>• Preventive measures to address gender discrimination in labor market following structural changes in industry and labor market</li> <li>• Strategies to improve the quality of social care and to expand gender publicity</li> <li>• Gender equality issues and policy measures for families and life in various forms</li> </ul>
Expansion of gender equality in future generation and enlarged policy areas for responding to gender violence	<ul style="list-style-type: none"> <li>• Research on sustainable society from gender equal perspective</li> <li>• Identification of strategic area for the spread of gender equality policy for future generation</li> <li>• Diffusion of gender equality culture and strengthening of women's rights</li> <li>• Analysis in gender violence and countermeasures</li> <li>• Research on women's health rights and sexual and reproductive rights</li> <li>• Enhancing implementation power of gender equality policies through timely discovery and diagnosis of policy agenda</li> </ul>
Strengthening comprehensive research for effective gender mainstreaming	<ul style="list-style-type: none"> <li>• Dissemination and internalization of policy evaluation and evaluation with a gender perspective</li> <li>• Research for gender mainstreaming in budget and execution process</li> <li>• Support for strengthening and efficiency of governance for gender mainstreaming</li> <li>• Generating tailored statistical data and database for gender mainstreaming and gender equality policies</li> <li>• Domestic and international cooperation on the global gender equality agenda</li> </ul>

## Priority Research Projects

Number	Title	Project Manager
1	<b>Study on Protection and Support Measures for Victims of Trafficking</b>	Mijeong Lee, Senior Research Fellow
	<ul style="list-style-type: none"> <li>Review of international cases on implementation of protection and support measures for victims of trafficking, to draw out policy implication, and seek the establishment of protection and support systems for victims of trafficking</li> </ul>	
2	<b>Study on Improvement of Gender Equality in Organizations through ESG Management</b>	Seung-hyun Lee, Associate Research Fellow
	<ul style="list-style-type: none"> <li>Review of ESG Management and theoretical discussions, to overview current status and measures to utilize ESG management principles in dealing with gender issues in organizations</li> </ul>	
3	<b>Study on Improving the System and Management of Gender Equality Education</b>	Yunjeong Choi, Research Fellow
	<ul style="list-style-type: none"> <li>In examining the possibility of integrating into a national level gender equality education, which is currently oriented around demand- and individual-based, the study overviews the limitations of segmented and individualized gender-related education, to seek possible institutional measures</li> </ul>	
4	<b>Korean ODA Strategy for Gender Equality in the Post-COVID Era</b>	Jiso Yoon, Associate Research Fellow
	<ul style="list-style-type: none"> <li>Establishing ODA strategy for gender equality by sector in the Post-COVID era, ultimately contributing to sustainable 2030 agenda at the global level</li> </ul>	
5	<b>Integrated Management Model for Gender Mainstreaming (I): Building a Multi-level model</b>	Taek Myeon Lee, Senior Research Fellow
	<ul style="list-style-type: none"> <li>For integrated management of gender mainstreaming policies, building a theoretical model to link among gender mainstreaming implementation tools, between the tools and other government systems, and between different government levels</li> </ul>	
6	<b>Challenges of Gender Equal Future (I): Gender Innovation in ICT and New Industries</b>	Seon-Mee Shin, Senior Research Fellow
	<ul style="list-style-type: none"> <li>Examine the definition of gender innovation, the process of establishing legal and institutional foundations, international trends, societal demands for gender innovation, and awareness and response in the current science and technology industry, to finally design roadmap for gender innovation policy in the industry</li> </ul>	
7	<b>Reorganizing Social Care from Gender Perspective (I): Care Policy in the Era of Individualization</b>	Eun Ji Kim, Research Fellow
	<ul style="list-style-type: none"> <li>Investigate reorganization directions for social care policy of high quality from gender perspective</li> </ul>	

## Research Projects

### ■ Labor and Employment

Number	Title	Project Manager
1	Influence of Positive Labor Market Policy on Women's Labor Market	Jongsoog Kim, Senior Research Fellow
2	Study on the Influence and Improvement of Labor Incentive and Child Incentive Tax System on Women	Woori Shin, Associate Research Fellow
3	Criteria for Determining Equal Pay for Equal Work, to Close Gender Wage Gap	Miyoung Gu, Research Fellow
4	The Effect of Women's Employment Status and Work Flexibility on Career Retention	Sungmi Jung, Associate Research Fellow
5	Study on Improvement of Gender Equality in Organizations through ESG Management	Seung-hyun Lee, Associate Research Fellow
6	Challenges of Gender Equal Future (I): Gender Innovation in ICT and New Industries	Seon-Mee Shin, Senior Research Fellow
7	Study on Improvement of Work Conditions for Part-time Jobs in Health and Social Welfare Services	Yong Taek Kim, Research Fellow

### ■ Representation, Law, Gender-equal Culture·Awareness, Education

Number	Title	Project Manager
1	Measures to Improve Subsidy Management by Political Parties for Fostering Female Politicians	Eun Kyung Kim, Research Fellow
2	Study on the Effectiveness of Family-Related Legislation: Gender-Sensitive Amendments to the Constitution	Seon-young Park, Senior Research Fellow
3	Responding to Gender Bias in Using Artificial Intelligence Deep Learning	Mee-kyung Moon, Senior Research Fellow
4	Analysis on Digital Sex Culture among Adolescents and Sex Education Tasks	Jeonghye Kim, Associate Research Fellow
5	Study on System and Management of Gender Equality Education in Korea	Yunjeong Choi, Research Fellow

### ■ Family and Childcare

Number	Title	Project Manager
1	Study on Improving Multidimensional Poverty and Gender Gaps in Single-parent Families	Mijun Park, Associate Research Fellow
2	Management and Challenges of Support System in Response to Family Changes	Hyo Jean Song, Research Fellow
3	Reorganizing Social Care from Gender Perspective (I): Paradigm Shift on Care Policy in the Era of Individualization	Eun Ji Kim, Research Fellow
4	Study on the Use of Dementia Center and Gender-Sensitive Improvements	Mijun Park, Associate Research Fellow

## Research Projects

### Gender-based Violence and Safety, Health

Number	Title	Project Manager
1	Study on Protection and Support Measures for Victims of Trafficking	Mijeong Lee, Senior Research Fellow
2	Study on Transition of Support System for Victims of Domestic Violence in the Post-COVID era	Hyo-Joo Kim, Associate Research Fellow
3	Safety Issues and Policy Responses to Women Single Household	Mihye Chang, Senior Research Fellow
4	Discrimination Experience and Human Rights Promotion for Women with Severe Disabilities in the area of Sex and Reproduction	Dongsik Kim, Senior Research Fellow

### Gender Mainstreaming

Number	Title	Project Manager
1	Study on Operation of Gender Impact Assessment reflecting on Policy Characteristics: SOC in Life	Yun-Young Nam-Gung, Associate Research Fellow
2	Improving the Effectiveness of Specific Gender Impact Assessment	Dool-Soon Kim, Research Fellow
3	Mid- to Long-Term Plan to Analyze and Evaluate Gender Budgeting	
	Implications of Gender Budgeting in OECD Countries: A Comparative Study of Gender Budgeting and Government Organization Context	Taek Myeon Lee, Senior Research Fellow
	Study on Linking Local Gender Budget and Midterm Finance Plan	Hyo-Joo Kim, Associate Research Fellow
	2022 Gender Budgeting Strategy	Minjung Sung, Associate Research Fellow
4	Management of Gender Budgeting and Evaluation Committee	Young-Sook Kim, Research Fellow
5	2022 Gender Equality Strategy	Wonjung Kim, Associate Research Fellow
6	Integrated Management Model for Gender Mainstreaming (I): Building a Multi-level model	Taek Myeon Lee, Senior Research Fellow
7	2022 Operation of Gender Statistics System	Sungmi Jung, Associate Research Fellow
8	Korean Longitudinal Survey of Women & Families: the 2022 Annual Report	Sun Mi Cho, Associate Research Fellow
9	2022 Korean Women Manager Panel	Seung-hyun Lee, Associate Research Fellow
10	Developing Women's Policy Agenda to Respond to 'With Corona' based on Big Data	Sun Mi Cho, Associate Research Fellow
11	Korean ODA Strategy for Gender Equality in the Post-COVID Era	Jiso Yoon, Associate Research Fellow



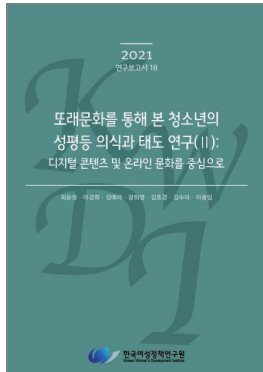
# IV. KWDI's Publications

22 Major Publications

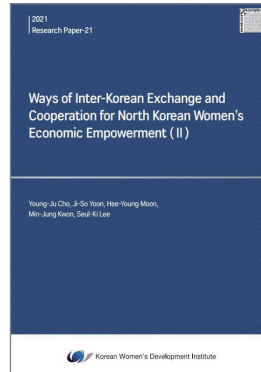


KWDI

## Major Publications



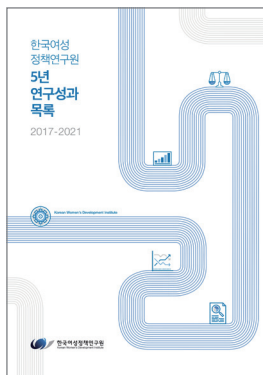
Research Reports



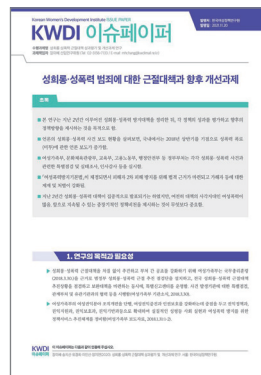
English Research Reports



Research Achievements Pocket Book



List of Research Achievements of Past 5 Years



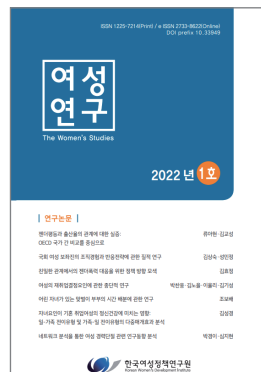
Issue Paper



KWDI Brief



Gender Review



Women's Studies



Annual Report



---

<b>Date of Publication</b>	March, 2022
<b>Publisher</b>	Yookyoung, Mun
<b>Publishing Agency</b>	225 Jinheung-rso, Eunpyeonggu, Seoul, Korea, Korean Women's Development Institute TEL. 82-2-3156-7000 eng.kwdi.re.kr
<b>Planning</b>	Center for Strategic Projects for Gender Equality
<b>design·Printing</b>	Seilfocus



**The First Partner for Gender Equality**

[www.kwdi.re.kr](http://www.kwdi.re.kr)



225 Jinheung-ro, Eunpyeonggu, Seoul, 03367, Korea  
TEL. (02)3156-7000 FAX. (02)3156-7007