

2020-2021

Annual Report

Korean Women's Development Institute

The First Partner for Gender Equality



KWDI

Korean Women's Development Institute

CONTENTS

04	I . Introduction
08	II . 2020 Research Activities
16	III. 2021 Research Activities
21	IV. KWDI's Publications

Preface



Korean Women's Development Institute(KWDI) is a government research think-tank under the Prime Minister's Office of South Korea. Since its establishment in 1983, KWDI has dedicated itself in carrying out policy and legal research in the realm of gender and family issues of Korea.

Every year, KWDI publishes an annual report to disseminate its research results and provide information on research trends. The 2020-2021 Annual Report introduces 2020's research activities aiming at setting the policy agenda such as seeking to redesign gender equality policy during the paradigm shift, analyzing the gender consciousness of a new generation and developing youth policies with gender perspective, and analyzing the socioeconomic effects of gender equality. Moreover, it includes 2021's research projects with a focus on designing policies for successful implementation of the transition period of gender equality policy, forecasting future society gender agenda and developing gender sensitive policy tasks, and expanding data-based policy research for practical implementation of gender equality policies.

In 2021, KWDI will continue support the successful implementation of gender policies in South Korean society, by developing various policy agenda and carrying out data-based gender research that incorporates gender perspectives of all ministries. In addition, as a global gender research institute leading a inclusive society in a rapidly changing social environment, KWDI will continue to conduct various research to achieve gender mainstreaming in Korean society.

We look forward to your encouragement and support.

Thank you.

Yookyoungh Mun
The 16th President of the Korean Women's Development Institute

A stylized, handwritten signature in black ink, appearing to read 'Mungh' or similar.

I

Introduction

05 Mission and History

06 Vision and Goals

07 Organization

Mission

To contribute to the establishment of national gender equality policies for realization of gender-equal society and to the enhancement of citizen happiness.

History

2020

2020. 9. 24 **Inauguration of the 16th President, Yookyong Mun**

2000

2007. 5. 11 **Korean name of the institute changed from 'Women's Development Institute' to 'Korean Women's Policy Institute'**

2005. 7. 1 Placed under the supervision of the National Research Council for Economics, Humanities, and Social Sciences

1990

1999. 1. 29 Placed under the supervision of the National Research Council for Humanities and Social Sciences

1998. 2. 28 Placed under the supervision of the Presidential Commission on Women's Affairs

1995. 9. 28 Opening of the Common Forum for Women (annex building)

1991. 4. 18 Placed under the supervision of the Ministry of Political Affairs (II)

1980

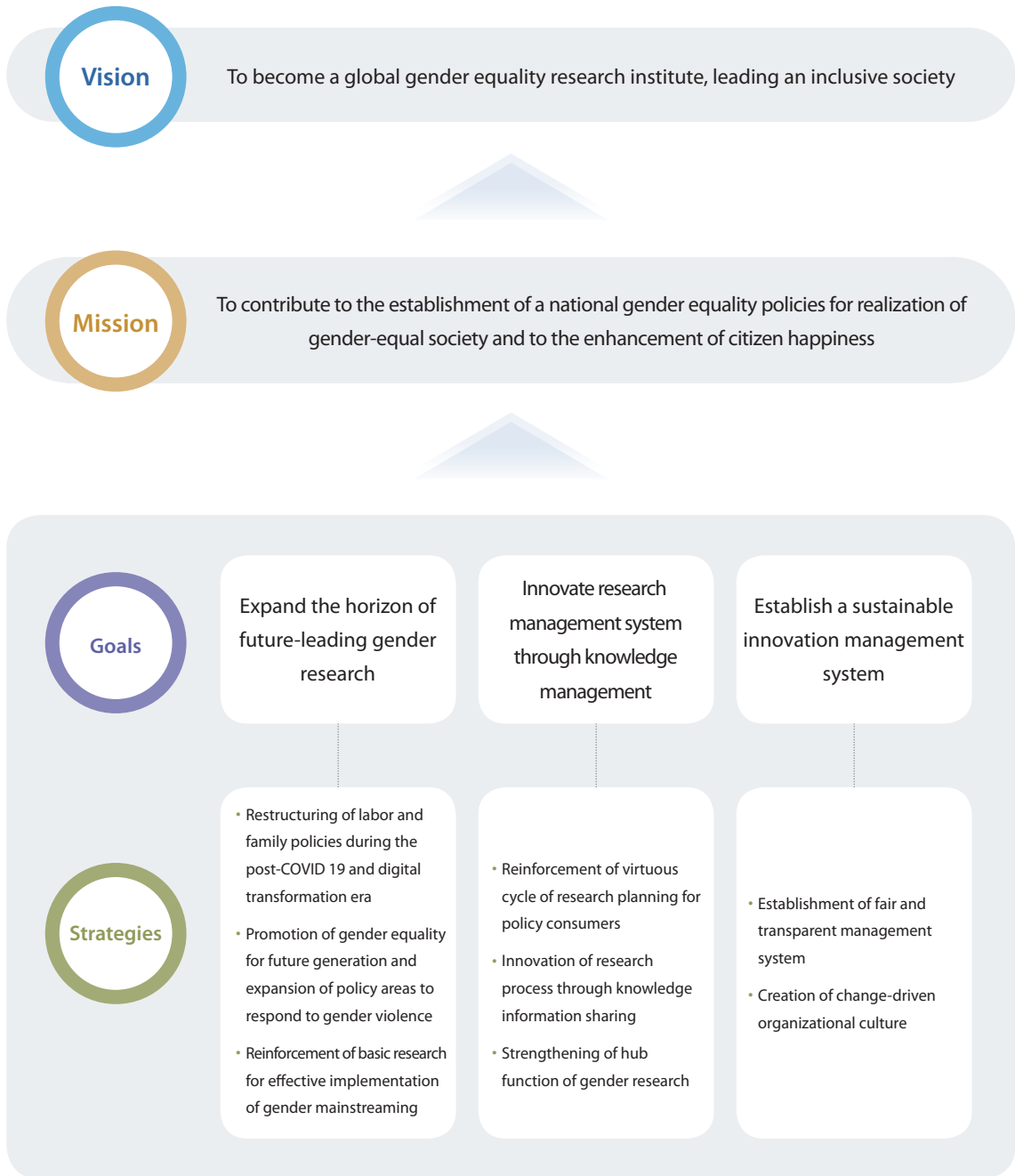
1987. 11. 20 Opening of the institute complex

1983. 4. 21 **Establishment of the institute**

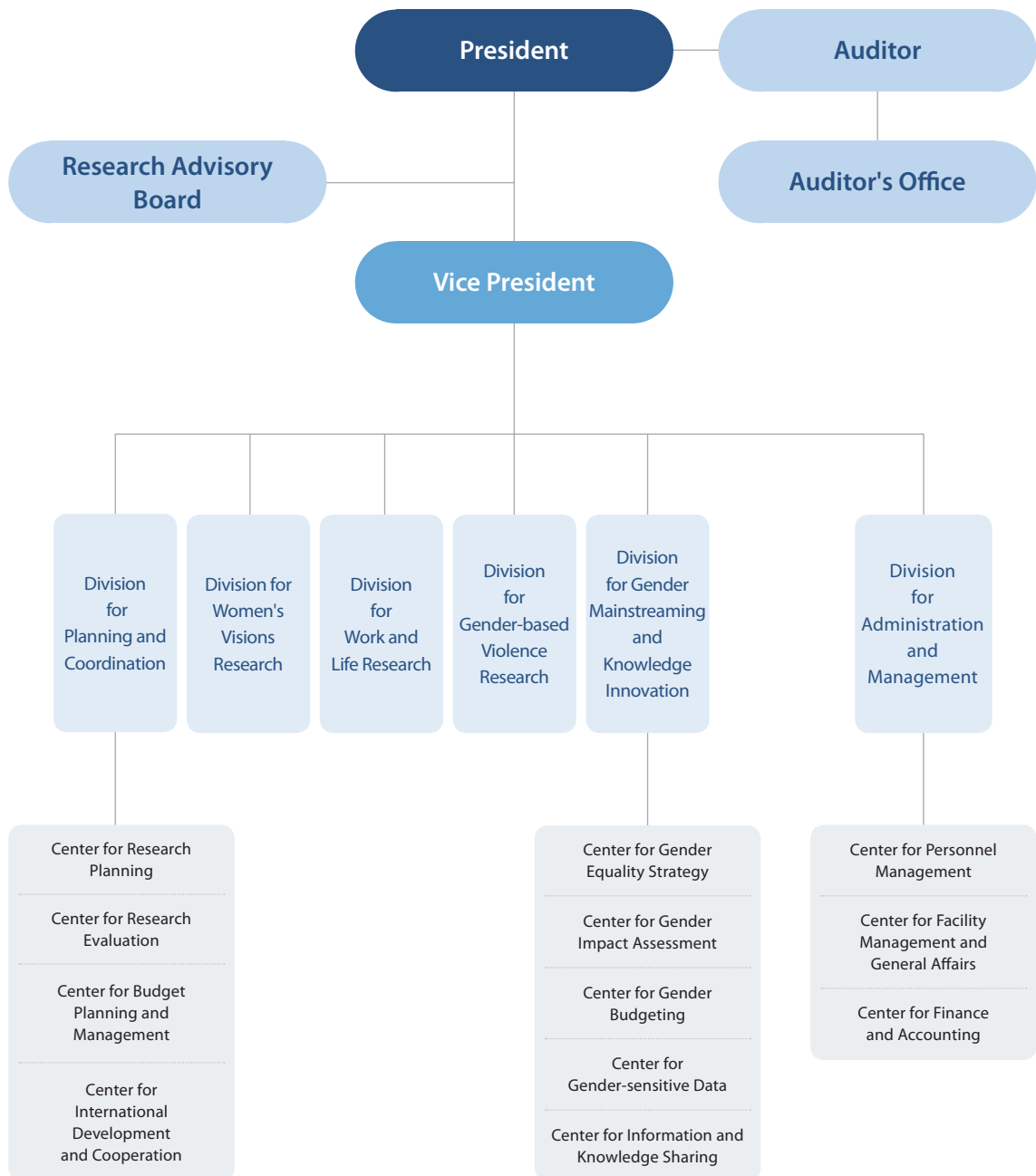
1983. 3. 14 Announcement of the Enforcement Ordinance of the KWDI Act

1982. 12. 31 Enactment and announcement of the Korean Women's Development Institute (KWDI) Act

Vision and Goals



Organization



II

2020 Research Activities

- 09 Priority Research Projects
- 10 Research Projects
- 13 Dissemination Activities

Priority Research Projects

Number	Title	Project Manager
1	Survey of Gender-Based Harassment in the Workplace and Policy Implications	Miyoung Gu, Research Fellow
	■ Identify the status and problems of sexual harassment in the workplace, as well as the limitations of the current legislative system regarding the prevention and relief of sexist harassment, and thereby suggest legal measures to improve the system	
2	Study on Limitations of Protection Discourses in Gender-Based Violence Policies and Policy Directions: Focusing on Sexual Violence Prevention Policies	Jeonghye Kim, Associate Research Fellow
	■ Analyze the problems of protective discourse on women in policies that tackle gender-based violence, and identify the impact and limitations of those policies that put an emphasis on protecting "vulnerable women", and thereby present the future policy direction towards reducing gender-based violence	
3	A Study on the Mid- and Long-term Strategies for Gender Budgeting Analysis and Evaluation Projects	
	[3-1] How to Link Gender Budgeting with a National Fiscal Management Plan in Korea (II)	Sun-Joo Cho, Senior Research Fellow
	■ Conducive to the second year phase of the 'Research on the Mid-and Long-term Measures to Improve Major Fiscal Systems from a Gender Perspective', identify specific implementation tasks and methods for linking gender budgeting with the national fiscal management plan in terms of both formality and contents, thereby ensuring that the direction of the national fiscal management explicitly includes the elimination of gender inequality and promotion of gender equality	
	[3-2] Way of Linking the In-Depth Evaluation System to the Gender Budgeting System (II)	Hyo-Joo Kim, Associate Research Fellow
4	Development of Strategies by Sector for Reducing the Gender Gap in the Labor Market (III): Focusing on Gender Segregation across Fields of Study	Seon-Mee Shin, Senior Research Fellow
	■ Review the balance between women's equal rights to work and policies for ensuring women's equal opportunities, and propose tasks to address blind spots in policies, by analyzing if gender segregation in university majors leads to gender gaps in employment rates, segregation in occupations, and gender pay gaps for youth who are in the early stage of their career development	
5	A study on the Gender Awareness and Attitude of Youths through Peer Culture (I): Comparison of Gender Awareness and attitude in Peer Culture	Yunjeong Choi, Associate Research Fellow
	■ Analyze the structure of gender awareness and gender conflicts by specifically identifying factors such as gender role awareness, gender discrimination, gender issues, and gender conflicts among adolescents. Compare the trends in peer culture among adolescents between gender, and thereby analyze their implications and impacts on gender conflicts and gender role stereotypes	

Research Projects

■ Family and Low Fertility

Number	Title	Project Manager
1	A Study on Changes in Partner Relationship and Economic Vulnerability of Older Women	Hyo Jean Song, Research Fellow
2	The Current Status of Family Caregiving for Older Adults and Strategies to Help Families through Community Care from Gender Perspective	Chung Gawon, Research Fellow
3	The Child Maintenance Enforcement and Support System: A 5-Year Evaluation and Measures for Improvement	Bok-soon Park, Research Fellow
4	A Paradigm Shift in Policy Responses to Low Birthrate (II): Reorganization of Discourse in Response to Low Birthrate	Eun-Ji Kim, Research Fellow

■ Women's Labor

Number	Title	Project Manager
1	The Current Situation of Women Construction Workers and Policy Suggestions	Kyung-Hee Kim, Senior Research Fellow
2	Survey of Gender-Based Harassment in the Workplace and Policy Implications	Miyoung Gu, Research Fellow
3	Analysis of Affirmative Action and Its Impact on Female Employment	Nanjue Kim, Associate Research Fellow
4	A Study on the Gender Wage Gap According to Skill Variation	Sungmi Jung, Associate Research Fellow
5	Development of Strategies by Sector for Reducing the Gender Gap in the Labor Market (III): focusing on Gender Segregation across Fields of Study	Seon-Mee Shin, Senior Research Fellow
6	Gender-Sensitive Analysis of Key National Agendas and Improvement Plans (II) : Facilitating the Social Economy	Ki Taek Jeon, Senior Research Fellow
7	Study on Women Job at a Time of Digital Transformation (I): Women Job and its Future	Eun-Jin Oh, Senior Research Fellow
8	2020 Korean Women Manager Panel	Seung-hyun Lee, Associate Research Fellow
9	Anonymous Reporting Centers for Sexual Harassment and Gender Discrimination in the Workplace: Analysis of Operational Performance and Measures for Improvement	Miyoung Gu, Research Fellow
10	An Assessment Study on the Performance of Women's Reemployment Center	Nanjue Kim, Associate Research Fellow

Research Projects

■ Gender Equality Culture and Education

Number	Title	Project Manager
1	Policy Measures for the Social Inclusion of Marriage-based Migrant Women: Focusing on Expanding Social Participation	Yi-Seon Kim, Research Fellow
2	Evaluation of Civil Servants' Capability on Gender Equality and Policy Suggestions : Focus on the Senior Civil Service	Dool-Soon Kim, Research Fellow
3	A Study on the Gender Awareness and Attitude of Youths through Peer Culture (I) : Comparison of Gender Awareness and attitude in Peer Culture	Yunjeong Choi, Associate Research Fellow
4	Analysis of Women Proportional Representatives on Their Roles and Legislative Activities in term of Pursuing Substantive Representation	EunKyung Kim, Research Fellow
5	Study on Enhancing Effectiveness of Laws concerning Women and Family: Suggestions for Gender-Sensitive Reform of Political Laws	Seon-young Park, Senior Research Fellow
6	Legislative Agendas on Women and Families for the 21th National Assembly	Bok-soon Park, Research Fellow
7	Ways of Inter-Korean Exchange and Cooperation for North Korean Women's Economic Empowerment(II)	Young-Ju Cho, Associate Research Fellow

■ Gender-based Violence and Safety

Number	Title	Project Manager
1	Research on Measures to Enhance the Effectiveness of Violence Prevention Education: Towards Centering Male Participants	Mijeong Lee, Senior Research Fellow
2	Study on Limitations of Protection Discourses in Gender-Based Violence Policies and Policy Directions: Focusing on Sexual Violence Prevention Policies	Jeonghye Kim, Associate Research Fellow
3	Measures to Improve Support for Child and Youth Victims of Online Sexual Exploitation	Mijeong Lee, Senior Research Fellow
4	Countermeasures to Eradicate Sexual Harassment and Violence: Research on Performance Evaluation and Improvement Tasks	Mihye Chang, Senior Research Fellow
5	Preparing Evaluation Standards for Non-consensual Sexual Acts: Research on Case Studies from Korea and Other Countries	Deuk-kyoung Yoon, Research Fellow

Research Projects

■ Gender Mainstreaming

Number	Title	Project Manager
1	How to Link Gender Budgeting with a National Fiscal Management Plan in Korea(II)	Sun-Joo Cho, Senior Research Fellow
2	Way of Linking the In-Depth Evaluation System to the Gender Budgeting System (II)	Hyo-Joo Kim, Associate Research Fellow
3	2020 Operation of Gender Statistics System	Jae-seon Joo, Research Fellow
4	Women in Korea 2021	Chi Seon Song, Senior Researcher
5	Strategic Projects for Gender Equality 2020: The Dissemination of Gender Equality Agendas for a Sustainable Society	Yoojin Choi, Research Fellow
6	Korean Longitudinal Survey of Women & Families: the 2020 Annual Report	Jae-seon Joo, Research Fellow

Dissemination Activities

■ Signing of MOU

Number	Partners	Date	Activities
1	United Nations Population Funds (UNFPA)	Dec, 2020	<ul style="list-style-type: none"> • Signed a new MOU with the UNFPA, which has the basis for activities to improve women's rights and maternity medical treatment (written MOU) • Co-hosted international forum on 'Low Fertility and Policy Dialogue'(Dec 11, 2020/Seoul)

■ Policy Forums for Gender Equality Promotion

Wave	Date	Forum Title	Host
120	Sept 22, 2020	"Gender Equality", the Keyword of Change in Public Service Society: Roundtable to Seek a Gender-equal Organizational Culture	■ KWDI
121	Oct 28, 2020	The Life of Women in 2030 in the Era of Ultra-low Fertility: A Story of Labor and Birth	<ul style="list-style-type: none"> ■ Presidential Committee on Ageing Society and Population Policy ■ KWDI
122	Nov 19, 2020	The Story of Sexual and Reproductive Rights for All	<ul style="list-style-type: none"> ■ Presidential Committee on Ageing Society and Population Policy ■ KWDI
123	Dec 16, 2020	COVID-19 and the Future of Gender Equality	<ul style="list-style-type: none"> ■ KWDI ■ Korea Institute for Gender Equality Promotion and Education ■ Korean Association of Women's Studies

Dissemination Activities

■ Conferences, Seminars and Workshops

Number	Date	Title	Host
1	Apr 13, 2020	[27th Gender and Legislation Forum] Roundtable on Seeking Legal Systems to Eradicate Digital Sexual Exploitation	<ul style="list-style-type: none"> ■ KWDI ■ Korean Association of Gender and Law ■ Korean Women Lawyers Association ■ MINBYUN-Lawyers for a Democratic Society: Women's Human Rights Committee ■ Joint Countermeasure Committee on Telegram Sexual Exploitation
2	Apr 23, 2020	[28th Gender and Legislation Forum] 21 st General Election Evaluation: Still a Long Way to Political Parity	<ul style="list-style-type: none"> ■ KWDI ■ Korea Women Parliamentarian Network
3	May 27, 2020	First Anniversary Debate on the Establishment of a Gender Equality Department	<ul style="list-style-type: none"> ■ Ministry of Gender Equality and Family ■ Ministry of Education ■ Ministry of Justice ■ Ministry of National Defense ■ Ministry of Culture, Sports and Tourism ■ Ministry of Health and Welfare ■ Ministry of Employment and Labor ■ Supreme Prosecutor's Office ■ Prosecution Service ■ KWDI ■ Korea Institute for Gender Equality Promotion and Education
4	May 28, 2020	[1st Health and Welfare Gender Equality Policy Forum] The Infectious Disease Crisis and the Necessity of Gender-sensitive Health Care Policy	<ul style="list-style-type: none"> ■ Ministry of Health and Welfare ■ KWDI
5	Jun 11, 2020	[1st Covid 19 Relay Forum on Women and Family by Sector] Current Status of Women's Labor Crisis and Policy Tasks Due to Covid 19	<ul style="list-style-type: none"> ■ Ministry of Gender Equality and Family ■ KWDI
6	Jun 18, 2020	[2nd Covid 19 Relay Forum on Women and Family by Sector] The Current Status and Policy Tasks of Women Workers in the Blind Spot of Employment Safety Net after Covid 19	<ul style="list-style-type: none"> ■ Ministry of Gender Equality and Family ■ KWDI
7	Jun 30, 2020	[3rd Gender and ODA Forum] Response to Gender-based Violence in Development Cooperation and Humanitarian Aid	<ul style="list-style-type: none"> ■ KWDI ■ Korea NGO Council for Overseas Development Cooperation(KCOC)
8	July 1, 2020	[National Assembly Women and Children's Human Rights Forum of National Assembly] Addressing the Limitations of the Prevention of Nth Room Act: Policy Seminar on the 21st National Assembly Legislative Tasks for the Eradication of Digital Sexual Violence	<ul style="list-style-type: none"> ■ Rep. Insook Kwon ■ National Assembly Women and Children's Human Rights Forum of National Assembly ■ KWDI ■ Korean Institute of Criminology ■ Joint Countermeasure Committee on Telegram Sexual Exploitation
9	July 10, 2020	[3rd Covid 19 Relay Forum on Women and Family by Sector] Changes in Family and Policy Tasks Due to Covid 19	<ul style="list-style-type: none"> ■ Ministry of Gender Equality and Family ■ KWDI
10	July 16, 2020	[4th Covid 19 Relay Forum on Women and Family by Sector] Covid 19 and Gender Violence: Current Status on Domestic Violence and Response	<ul style="list-style-type: none"> ■ Ministry of Gender Equality and Family ■ KWDI
11	July 20, 2020	Policy Discussion on Reorganization of Parental Leave System for All Working Parents	<ul style="list-style-type: none"> ■ Presidential Committee on Ageing Society and Population Policy ■ KWDI

Dissemination Activities

Number	Date	Title	Host
12	Aug 11, 2020	Policy Discussion on Creating a Regional Gender Equality Environment	<ul style="list-style-type: none"> ■ Ministry of Gender Equality and Family ■ Rep. Choonsook Jung ■ KWDI
13	Aug 20, 2020	[4th Gender and ODA Forum] Gender-based Violence Response Projects and Policies of International Organizations: Focusing on the Activities of UNHCR and UNDP	<ul style="list-style-type: none"> ■ KWDI ■ Korea Center for United Nations Human Rights Policy(KOCUN)
14	Sep 3, 2020	Discussion on How to Bridge the Gender Wage Gap	<ul style="list-style-type: none"> ■ Ministry of Gender Equality and Family ■ KWDI ■ Seoul Newspaper
15	Sep 4, 2020	2020 Korean Longitudinal Survey of Women and Family Academic Conference and Graduate Student Thesis Contest	<ul style="list-style-type: none"> ■ KWDI ■ Busan Women and Family Development Institute ■ Chungcheongnam-do Women's Policy Development Institute ■ Chungbuk Women Foundation
16	Sep 22, 2020	[The 12 th Asia-Pacific Forum on Development and Gender] Gender and Development Cooperation in a Post-COVID 19 Era	<ul style="list-style-type: none"> ■ KWDI
17	Nov 19, 2020	[Ministry of Gender Equality and Family 2020 Gender Equality Foundation Forum] Explore and Reinforce the Gender Impact Assessment of the Local Governments	<ul style="list-style-type: none"> ■ Ministry of Gender Equality and Family ■ KWDI ■ Incheon Foundation for Women and Family ■ Gyeonggido Women and Family Foundation
18	Nov 20, 2020	Gender Equality Policy Tasks for Women Workers	<ul style="list-style-type: none"> ■ KWDI
19	Nov 25, 2020	[KWDI International Forum on Beijing+25] Beijing and Beyond: Creating Gender Equal Future with the Next Generation	<ul style="list-style-type: none"> ■ KWDI ■ Embassy of Mexico in Seoul ■ Embassy of France in Seoul
20	Nov 26, 2020	Adding Happiness! Public Hearing on the 4th Basic Plan for Low Fertility and Aged Society	<ul style="list-style-type: none"> ■ Presidential Committee on Ageing Society and Population Policy ■ Korea Institute for Health and Social Affairs ■ KWDI
21	Nov 26, 2020	UN Security Council Resolution 1325 3rd National Action Plan Public Hearing	<ul style="list-style-type: none"> ■ Ministry of Gender Equality and Family ■ KWDI
22	Dec 10, 2020	[Global Korea Convention 2020] International Development Cooperation and Gender: 10 Years of the Korean Gender Equality ODA – Achievements and Vision	<ul style="list-style-type: none"> ■ National Research Council for Economic, Humanities and Social Sciences ■ Korea Institute for International Economic Policy
23	Dec 11, 2020	[Low Fertility Policy Dialogue] Policy Tasks in the Era of Ultra Low Fertility: Women's Rights in the Perspective of International Cases	<ul style="list-style-type: none"> ■ Korea CPE ■ UNFPA ■ KWDI
24	Dec 17, 2020	[29th Gender and Legislation Forum] Legislative Achievements Related to Gender Equality in the 20th National Assembly and the 21st National Assembly Legislative Tasks	<ul style="list-style-type: none"> ■ KWDI ■ Rep. Insook Kwon ■ Rep. Jungjae Kim
25	Dec 19, 2020	[30th Gender and Legislation Forum & Korean Association of Gender and Law Winter Seminar] Advances in Digital Technology and Changes in Women's Labor after Covid 19 and Legal Challenges	<ul style="list-style-type: none"> ■ KWDI ■ Korean Association of Gender and Law

III 2021 Research Activities

- 17 Research Goals and Directions
- 18 Priority Research Projects
- 19 Research Projects

Research Goals and Directions

■ Research Goals

- Policy design for successful implementation of gender equality policy transition period
- Gender agenda prospects for future society and gender-sensitive policy task development
- Data-based policy research expansion for practical implementation of gender equality policy

■ Research Directions

Strengthen the execution of gender equal women's labor policy	• Suggest strategies to strengthen gender-sensitivity in labor policy
	• Innovate women's job creation
	• Enhance the possibility of realizing gender equality and work-life balance policy
Improve the ability to implement policies on prevention of violence against women after the Me Too Movement	• Lay the foundation for practical implementation of Framework Act on Prevention of Violence against Women
	• Carry out in-depth analysis of gender violence patterns
	• Improve system to guarantee women's reproductive and health rights
Discover practical gender equality policies related to aging society, low birthrate and family diversity	• Prepare gender-related issues and policy measures for responding to aging society
	• Prepare action plans to promote gender equal low birth rate policy
	• Develop laws, systems, and policies related to new family forms
Develop multi-disciplinary policies to realize inclusive gender equality	• Respond to "gender conflict" and suggest strategies to spread gender equality awareness
	• Establish policies to resolve discrimination and secure diversity
	• Implement global gender equality agenda at home and abroad and strengthen gender mainstreaming in development cooperation
Improve systematic plan to revitalize gender equality policies of all ministries and discover policy tasks	• Establish measures to improve gender mainstreaming system
	• Expand production of empirical data to promote gender equality policy
	• Strengthen the effectiveness of the system for promoting gender equality policies

Priority Research Projects

Number	Title	Project Manager
1	Legislative Reorganization Plan for Response to Technology-facilitated Sexual Violence	Jeong-hye Kim, Associate Research Fellow
	<ul style="list-style-type: none"> Based on the recognition that technology-facilitated sexual violence is possible on the basis of dual sexual norms stipulated from gender discrimination, stigmatization of female victims, and a culture that consumes women sexually, this study wishes to review the limitations of current laws. Then analyze the characteristics of technology-facilitated sexual violence and continuously changing crime patterns to derive measures to improve the legal system to strengthen proactive intervention, punishment and victim support 	
2	A Study on the Awareness and Attitude towards Gender Equality Among Adolescents from a Peer Culture Perspective	Yunjeong Choi, Associate Research Fellow
	<ul style="list-style-type: none"> Analyzing the online cultural phenomena and characteristics of adolescent generations from the perspective of gender equality, identifying the geography of gender role perceptions and attitudes of these generations in more detail, and discovering implications for adolescent policies 	
3	Gender-sensitive Analysis of Key National Agendas and Improvement Plans	Gawon Chung, Research Fellow
	<ul style="list-style-type: none"> Diagnose the state of dementia national responsibility system operation and its limitations through gender perspective, focusing on the dementia elderly, their families, public dementia care service providers and workers. In addition, based on the analysis results, suggest improvement directions and policy tasks to contribute to the "socialization of gender-equal care for the elderly with dementia" 	
4	A Research on Care Policy After Covid 19	Young-ran Kim, Research Fellow
	<ul style="list-style-type: none"> On the premise that an infectious disease similar to Covid-19 can occur at any time, re-examine the direction and goals of the caring policies that have been pursued so far, and devise policy alternatives, as a result of the crisis that has been experienced for the first time in history 	
5	A Study on Changes in Agriculture and Rural Areas and Gender Sensitive Policy Direction	Yi-Seon Kim, Research Fellow
	<ul style="list-style-type: none"> Analyze status of gender equality amid changes in agriculture and rural areas. Also examine the relationship between the situation of the agricultural field and the gender structure that has changed rapidly since Covid-19. And present the importance and significance of realizing gender equal agriculture and rural areas 	
6	Study on Women Job at a Time of Digital Transformation	Seon Mee Shin, Senior Research Fellow
	<ul style="list-style-type: none"> Find ways to alleviate the concentration of low-wage and low-skilled jobs which is a structural problem in the era of digital transformation for women's labor market and monitor the implementation of continuous career development. And provide a new direction for establishing a social safety net for workers in gray areas of the future labor market 	
7	A Study on How to Improve the Operation of the Gender Impact Assessment System in Central Administrative Agencies	Namg Gung Yun Young, Research Fellow
	<ul style="list-style-type: none"> Identify issues in the operation of the gender impact assessment system through content analysis and system operation system analysis, and suggest ways to improve the system such as system reorganization 	

Research Projects

■ Family and Low Fertility

Number	Title	Project Manager
1	A Research on Care Policy After Covid 19	Young-ran Kim, Research Fellow
2	Gender-sensitive Analysis of Key National Agendas and Improvement Plans	Gawon Chung, Research Fellow

■ Women's Labor

Number	Title	Project Manager
1	A Study on Women's Labor Market Impact and Policy Tasks Following the Covid 19 Economic Crisis	Sung Mi Jung, Associate Research Fellow
2	A Study on How to Introduce the 'Gender Equality Disclosure System'	Ki-taek Kim, Senior Research Fellow
3	A Study on the Change of Women's Labor Market According to Industrial Structure Change	Jongsoog Kim, Senior Research Fellow
4	Effects and Tasks of the 52-hour Cap per Week on Women's Labor	Nanjue Kim, Associate Research Fellow
5	A Study on Improvement Measures for the System for Correcting against Gender Discrimination in Employment	Miyoung Gu, Research Fellow
6	Study on Women Job at a Time of Digital Transformation	Seon Mee Shin, Senior Research Fellow
7	Korean Women Manager Panel 2021	Seung-hyun Lee, Associate Research Fellow

■ Gender Equality Culture and Education

Number	Title	Project Manager
1	A Study on the Improvement of Women's Underrepresentation and Gender Fairness by the Head of the Local Governments	Eun Kyung Kim, Research Fellow
2	Ways of Inter-Korean Exchange and Cooperation for North Korean Women's Economic Empowerment (II)	Young-Ju Cho, Associate Research Fellow
3	A Study on the Awareness and Attitude towards Gender Equality Among Adolescents from a Peer Culture Perspective	Yunjeong Choi, Associate Research Fellow

Research Projects

■ Gender-based Violence and Safety

Number	Title	Project Manager
1	Legislative Reorganization Plan for Response to Technology-facilitated Sexual Violence	Jeong-hye Kim, Associate Research Fellow
2	Gender Sensitive Analysis and Improvement Tasks for the 'Infertile Couple Support Policy'	Dong-Sik Kim, Research Fellow
3	Protection Issues and Policy Countermeasures on Child and Youth Victims of Online Sexual Exploitation	Mijeong Lee, Senior Research Fellow
4	Study on Enhancing Effectiveness of Laws concerning Women and Family	Seon-young Park, Senior Research Fellow
5	A Research on Measures to Improve Medical Accessibility for Safe Pregnancy Termination	Dong-Sik Kim, Research Fellow

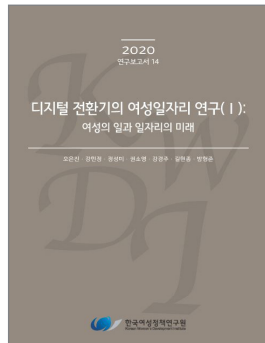
■ Gender Mainstreaming

Number	Title	Project Manager
1	A Study on Changes in Agriculture and Rural Areas and Gender Sensitive Policy Direction	Yi-Seon Kim, Research Fellow
2	A Study on Plans to Activate the Gender Mainstreaming System in the Office of Education	Youn Sun Chang, Associate Research Fellow
3	A Study on How to Improve the Operation of the Gender Impact Assessment System in Central Administrative Agencies	Namg Gung Yun Young, Research Fellow
4	Analysis and Evaluation of Gender Budgeting in Korea	
	Measures to Strengthen the Circulation Function of Gender Budgeting and Settlement System	Soo Bum Park, Research Fellow
	Ways of Linking the In-depth Evaluation System to the Gender Budgeting System	Hyo-Joo Kim, Associate Research Fellow
5	Operation Project for Gender Budgeting and Settlement System Council and Professional Evaluation Committee	Sun-Joo Cho, Senior Research Fellow
6	Strategic Projects for Gender Equality 2021	Yoojin Choi, Research Fellow
7	Operation of Gender Statistics System 2021	Jae-Seon Joo, Research Fellow
8	Women in Korea 2021	Chi Seon Song, Senior Researcher
9	Korean Longitudinal Survey of Women & Families 2021	Jae-Seon Joo, Research Fellow

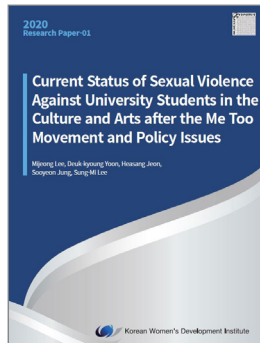
IV KWDI's Publications

22 Major Publications

Major Publications



Research Reports



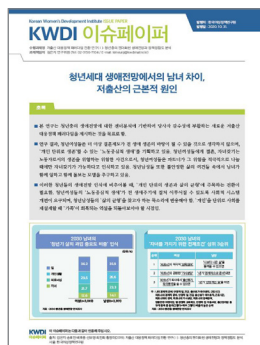
English Research Reports



Research Achievements
Pocket Book



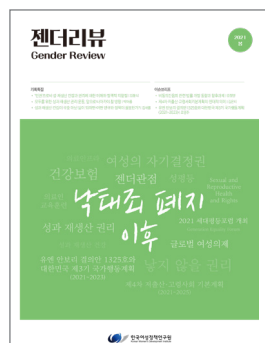
List of Resrch Achievements
of Past 5 Years



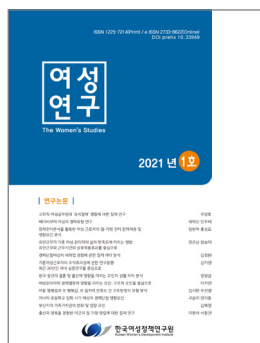
Issue Paper



KWDI Brief



Gender Review



Women's Studies



Annual Report

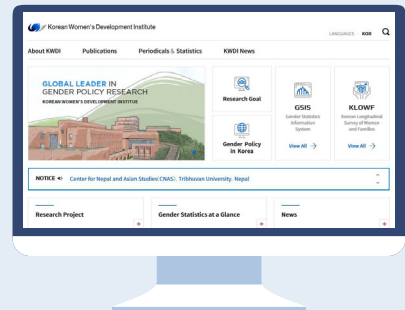
KWDI Knowledge Information Services

KWDI Websites

Korean Women's Development Institute's website provides various information such as our research reports, publications, news and research trend.



Korean Website <https://www.kwdi.re.kr>



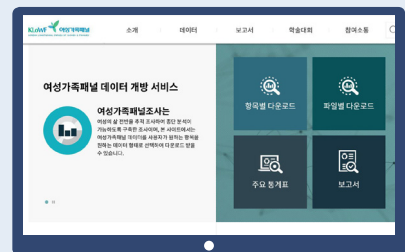
English Website <https://www.eng.kwdi.re.kr>

Family Websites

KWDI operates family websites to provide information and materials for each field of women's policy.



Gender Statistics Information System
<https://gsis.kwdi.re.kr/gsis>



Korean Longitudinal Survey of Women & Family
<https://klowf.kwdi.re.kr>

KWDI SNS

KWDI's official SNS share KWDI's new and research results to communicate with our policy consumers.

 Facebook <https://www.facebook.com/kwdipage>

 Youtube <https://www.youtube.com/kwdi2010>

 Blog <https://blog.naver.com/kwdi1983>



Date of Publication May, 2021
Publisher Yookyoung, Mun
Publishing Agency 225 Jinheung-rso, Eunpyeonggu, Seoul, Korea,
Korean Women's Development Institute
TEL. 82-2-3156-7000 eng.kwdi.re.kr
Planning Center for Strategic Projects for Gender Equality
Design•Printing Seilfocus



**The First Partner for
Gender Equality**

www.kwdi.re.kr



225 Jinheung-ro, Eunpyeonggu, Seoul, 03367, Korea
TEL. 82-2-3156-7000 **FAX.** 82-2-3156-7007