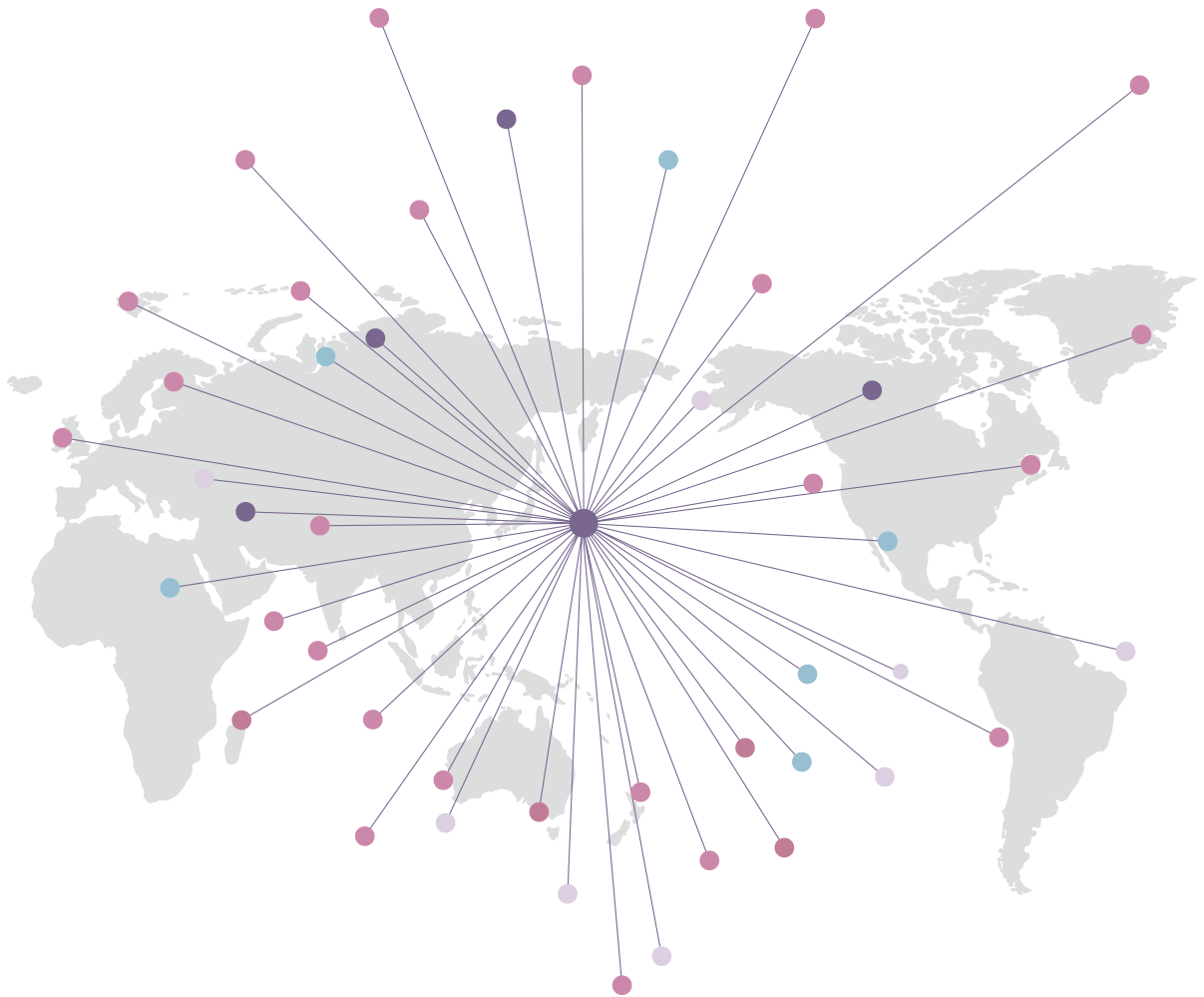




ANNUAL REPORT

2017.2018





I About KWDI 2

II 2017 Major Activities 7

III 2018 Research Trend 21

IV KWDI Publications 31



GREETINGS



Dear all,

Since its foundation in 1983, Korean Women's Development Institute (KWDI) has been doing its utmost as a women's policy think tank,

In order to provide useful information for those keenly interested in KWDI's work and women and family policies, we have issued the 「2017~2018 KWDI Annual Report」 which include various aspects and activities of KWDI in 2017~2018.

KWDI will continue to do its utmost to help create a gender equal society where people are happy with extensive research on women and family policies.

We ask for your continuous interest and encouragement

Insook Kwon
President of Korean Women's Development Institute

I About KWDI

1. Purpose of Establishment
2. History
3. Vision and Strategy System
4. Organization

The First Partner
for Gender Equality

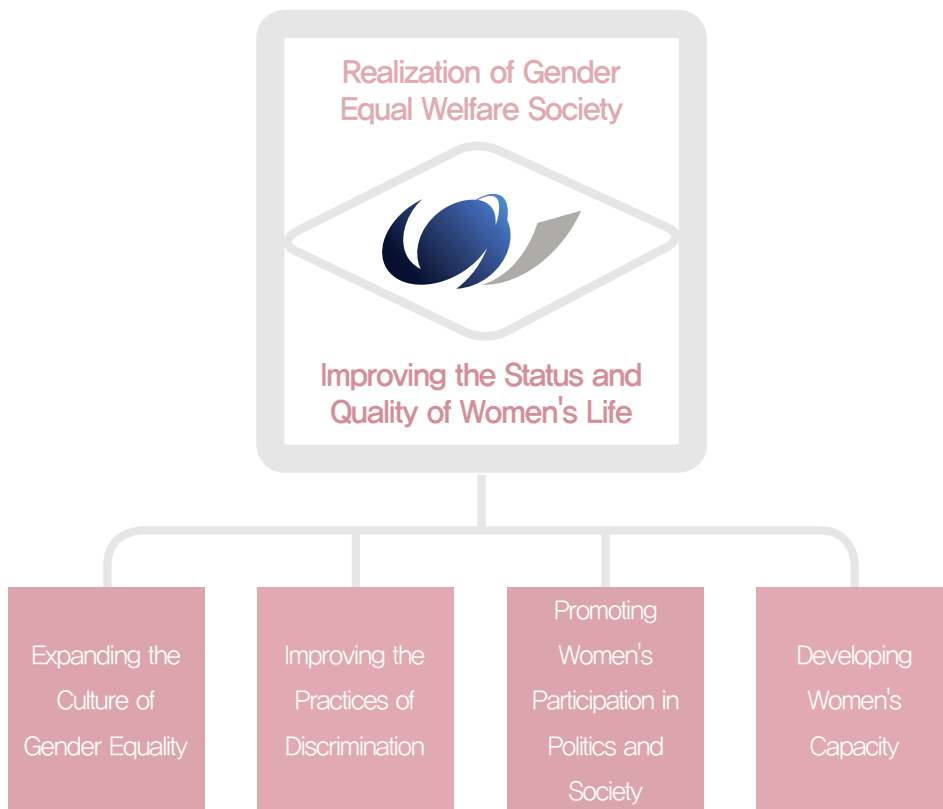


Purpose of Establishment



KOREAN WOMEN'S DEVELOPMENT INSTITUTE

The purpose of Korean Women's Development Institute is to perform a comprehensive research on women's issues and to contribute our efforts to women's development



History



2000s

- Sep 29 2017 Inauguration of the 15th President, Insook Kwon
- May 11 2007 Korean name of the Institute changed from 'Women's Development Institute' to 'Korean Women's Policy Institute'

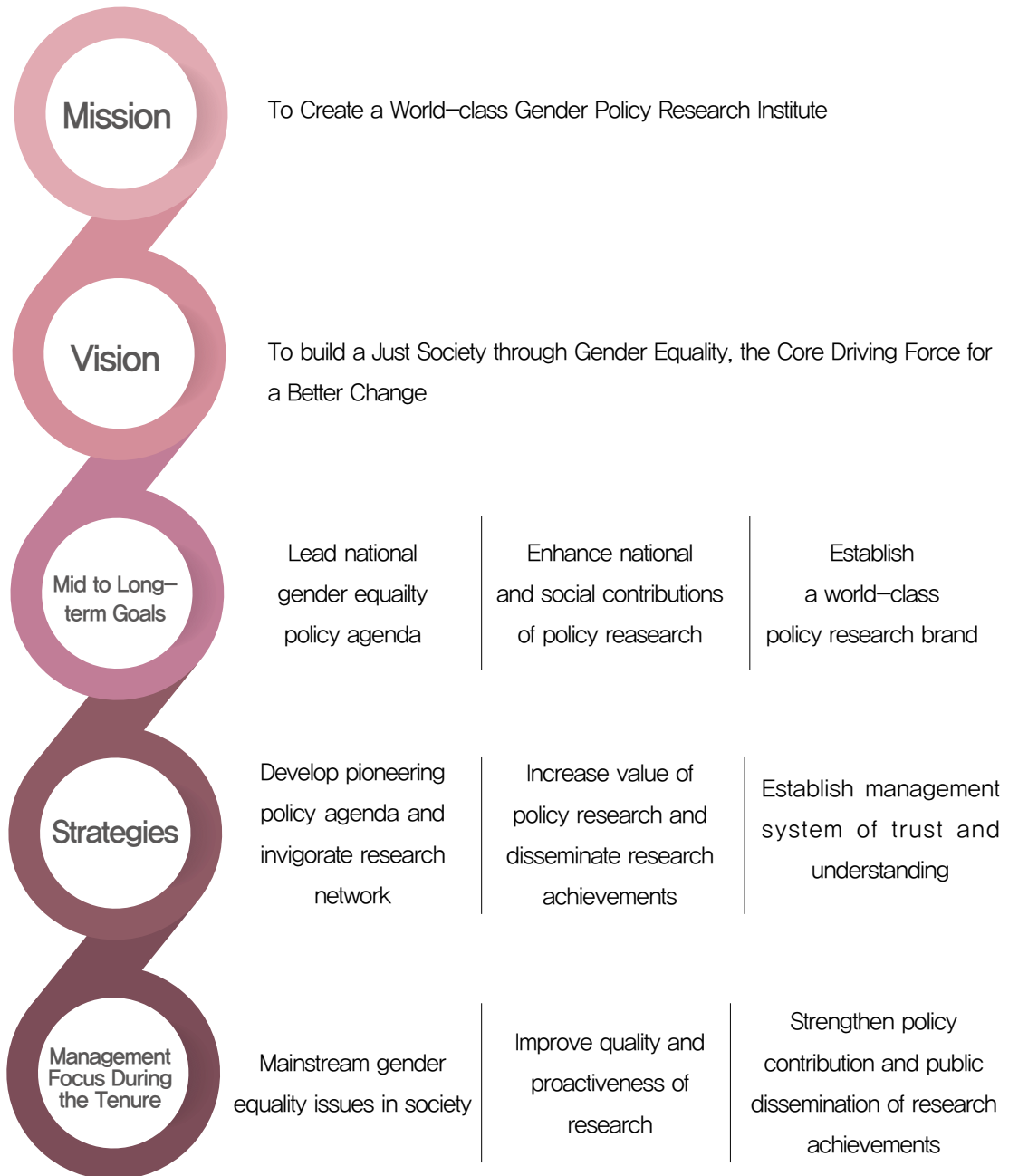
1990s

- Jan 29 1999 The Institute placed under the supervision of the National Research Council for Humanities and Social Sciences
- Feb 28 1998 The Institute placed under the supervision of the Presidential Commission on Women's Affairs
- Sep 28 1995 Opening of the Common Forum for Women (annex building)
- Apr 18 1991 The Institute placed under the supervision of the Ministry of Political Affairs (II)

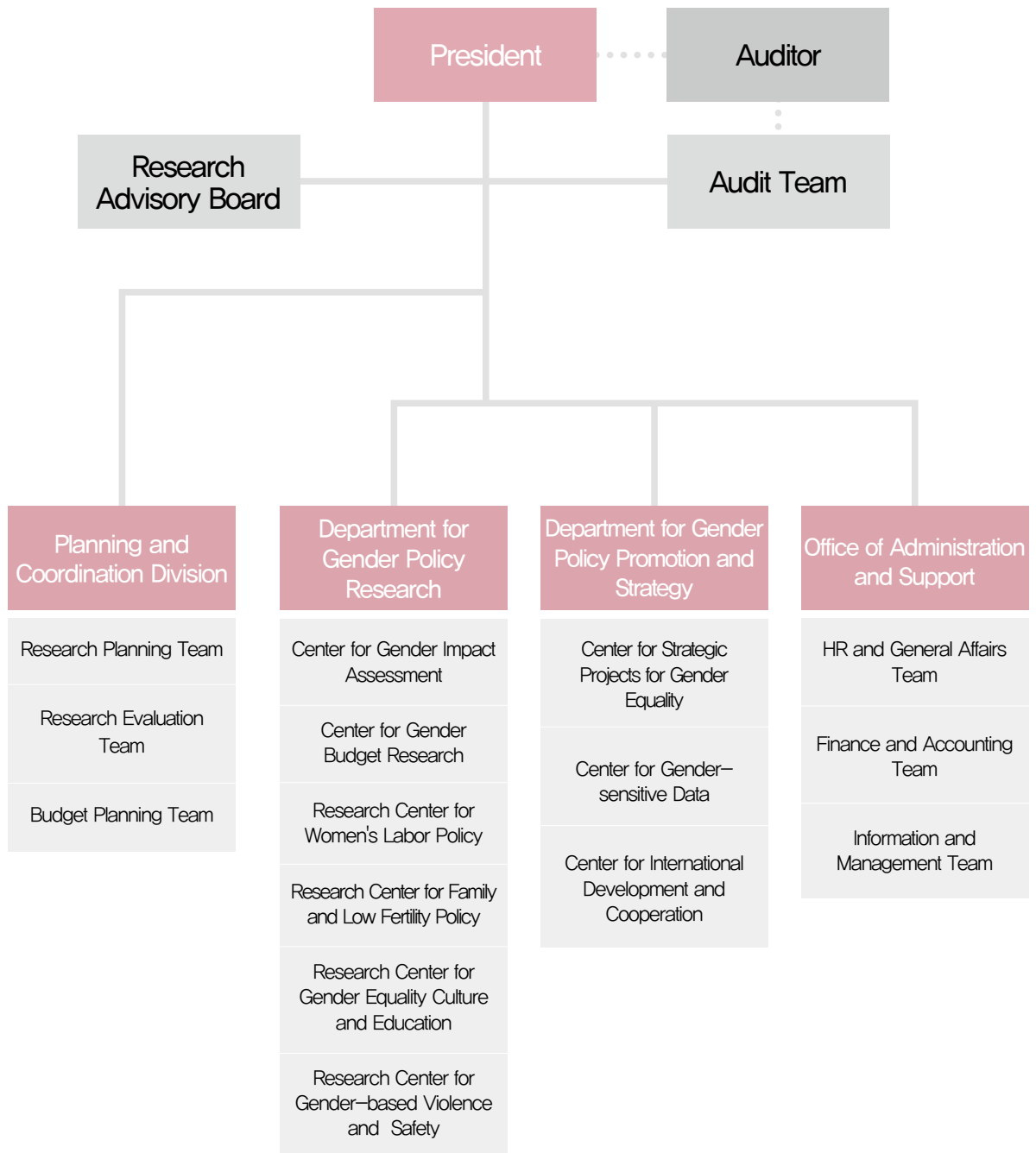
1980s

- Nov 20 1987 Opening of the Institute Complex
- Apr 21 1983 Establishment of the Institute under the supervision of the Ministry of Health and Social Affairs
- Mar 14 1983 Announcement of the Enforcement Ordinance of the KWDI Act (Presidential Decree No. 11071)
- Dec 31 1982 Enactment of the Korean Women's Development Institute (KWDI) Act (Act No. 3632)

Vision and Strategy System



Organization



II 2017 Major Activities

1. 2017 Research Project Goals
2. Main Research Trend
3. English Paper
4. Main Achievements
5. Major Activities and Events

The First Partner
for Gender Equality



2017 Research Project Goals



- Develop an agenda for a paradigm shift in gender equality
- Promote work · life balance and increase women's employment
- Prevent violence against women and enhance women's safety
- Create policy responses to changes in family structure and social environment

Main Research Trend



■ Reinforce gender equality culture and increase awareness

- Improve gender equal leadership
- Strengthen gender equal values of female youth groups for preparing their future
- Develop agendas to reinforce gender equality in political and social fields
- Establish the direction for a long term development of gender equal policies and discover policy issues
- Discover agendas to actively fulfill gender equality in local communities

■ Create female employment policy responses to economic and social changes

- Settle policies for compatibility of work and family life and improve work culture
- Recipe for active employment of females according to each period of their lives
- Enhance support in policies for employment of women in disadvantaged class

■ Support female talents in public · private sector and strengthen women's representativeness

- Foster and support female administrators in companies
- Foster and build up experience for female talents according to the period of their lives
- Improve and utilize competency customized according to each individual female

■ Eliminate violence against women and promote women's human rights

- Strengthen policy infrastructures to construct a social environment relating to the prevention of violence against women
- Uncover blind spots that are victimized by violence and reinforce prevention policies
- Modify legislations related to women's rights and family lives, and improve their effectiveness

■ Enhance women's safety and reinforce women's healthcare and maternity protection

- Set the basic direction of female safety policies closely related to everyday lives and construct an infrastructure

- Research health–risk factors for women according to the period of their lives and their gender, and seek recipes to reform related policies
- Systemize the care for women’s health and enhance protection of motherhood
- Research social issues regarding pregnancy and childbirth and draw up a recipe to reform related policies

■ Responses to changes in family environment, develop new family policy agenda and improve effectiveness

- Research family policy responding to the diversification of family types
- Develop family support policies in regard to worsened low birthrates
- Strengthen support for compatibility of work and family life through spreading family friendly corporate policies
- Uncover policy issues related to the diversification of multi–cultural families
- Discover agendas for creating a family friendly environment in local communities

■ Promote gender equality in national policies and enhance effectiveness of gender mainstreaming policies

- Establish systemization of the reflux of policies regarding legislations, plans and programs by the government and local governments
- Research recipes for the linkage between gender impact assessment and evaluation and gender sensitive budget system
- Enhance support for increasing effectiveness of the gender impact assessment and evaluation system

■ Improve effectiveness of gender budgeting policies on promoting gender equality

- Improve the effect of gender equal reforms on the financial program through strengthened performance management of the business regarding gender sensitive budget and accounts
- Seek possibility of a linkage with the performance management system of the government’s financial program
- Discern the degree of improvement on the government’s gender equality through enforcing gender sensitive budgets and accounts system

■ Establish and apply gender statistics for gender mainstreaming and to realize gender equality

- Construct and expand the gender sensitive statistical system and increase its availability
- Increase the production of basic statistics to carry out policies for gender equality
- Base study on the production of big data to discern the trend of policy for women

■ Develop and activate international cooperation projects

- Improvement on exchange of research through international policy networks
- Exchange of human resources to share and spread research results
- Share and spread research results and experiences internationally
- Spread gender equal culture and improve awareness of it through research and programs for “Better Life for Girls, BLG”

English Paper



No	Basic Project	Name
Gender Sensitive Policy	Analysis and Evaluation of Gender Budgeting in Korea(III)	Taek-Meon Lee
	Gender-sensitive analysis of government social welfare projects and ways to improve their efficiency	Young-Sook Kim
	Analysis and Evaluation of Local Government Gender Budgeting and Settlement System(III) : An Evaluation of Local Governments' Gender Budget Performance Review and its Policy Implications	Gawon Chung
	Study on Methods to Enhance Effectiveness of GlAA and Strengthen PPP(III): In the Area of Regional Development	Kyung-Hee Kim
	Study on Development of Standard Model for Specific Gender Impact Analysis and Assessment Vitalization of Local Government	Dool-Soon Kim
	Improvement and discovery of policy through utilization of Gender Big data	You Kyung Moon
	2017 Women in Korea	Jae-seon Joo
	A Study of Indicators for National Gender Equality Improvement	Jae-seon Joo
Family and Equality	Family Policies Implications in the Context of an Increase in One-person Households	Seung Ah Hong
	A Study for the Re-establishment of Sustainable Care Policy	Eun-Ji Kim
	Ten Years of Family-Friendly Community Establishment Policies: Evaluation and Issues	Soyoung Kim
	Study on Transition into Adulthood by Family Class : Focusing on Policy Implications	Kim, Young-ran
	A Study on the Improvement Plan for Supporting Families by the Introduction of Child Allowance	Eun-Ji Kim
	An Analysis on Bilingual Competence Development of Married Immigrants and Naturalized Citizens and Application	Ki-Taek Jeon
	Korean Longitudinal Survey of Women & Families: the 2017 Annual Report	Jae-seon Joo
	Hegemonic Masculinity and Changing Lives of Men	Kyoung Hee Ma
	A Study on the Introduction of the Restricted Reporting System for Sexual Violence in the Military	Sooyeon Lee
	Measures to expand women's political participation in 2018 local elections with a focus on large city/provincial councils	Eun Kyung Kim
Employment and Human Resources	Measures to Improve Gender Equality in Property Issues of Remarried Couples	Hyo Jean Song
	Goals for female representation and implementation strategies for the incumbent government	Mee Kyung Moon
	A Study for Effectiveness Enhancement of Women and Family-Related Legislations(V): Achievements and Challenges of the Equal Employment Opportunity Act for the Last 30 Years	Seon-young Park
	A Study on Future Employment Service Strategy for Invigorating Women's Employment	Eun-Jin Oh

No	Basic Project	Name
Employment and Human Resources	Research on Developing Corporate culture Assessment Index to promote Work-Family Balance	Minjung Kang
	Participation of young women in vocational training, and policy proposals	Seon-Mee Shin
	Ways to Improve the Effectiveness of Female Youth Programs Operated by On-campus Career Development Centers	Minjung Kang
	The Current Situation and Improvement Plan on Human Resource Development of Female Worker in Social Economy Area	Bok-Tae Kim
	Analysis and Policy Tasks of Vocational Capability Development System for Women to Enhance a Competency-Based Society(II)	Eun-Jin Oh
	The Current State of Unemployment of Women with Disabilities and Policy Agenda	Ki-Taek Jeon
	Achievements of Korea's Female Manager Employment Quota System and Future Development Plans	Mee-kyung Moon
Gender Violence and Safety	Korean Women Manager Panel	Nan-Jue Kim
	A Study on the Improvement of Statistical Measures for Violence against Women	Inseon Lee
	Domestic Violence in Korea: Focusing on Spousal Violence and Child Abuse	Inseon Lee
	Policy Considerations for Strengthening Women Safety according to Life Cycle(II): with Emphasis on the Safety of Women in Public Places	Mihye Chang
	A Comparative Study on the Decriminalization of Juvenile Prostitution and Protection	Deuk-kyoung Yoon
	Research on Ways to Improve the Effectiveness of Policies to Punish Sex Offenders Against Children and Adolescents	Deuk-kyoung Yoon
	A Study on the Support for Women with Mental Disorders who have Suffered Violence	Young-Taek Kim
	Sexual Violence and Domestic Violence Male Victims Support Status and Policy Task	Mijeong Lee
	A Study on the Introduction of the Restricted Reporting System for Sexual Violence in the Military	Mijeong Lee
	A Study on the Abortion Status and Awareness of Women	Dong-Sik Kim
International Cooperation and Women Friendly	Gender Inequalities in Health: Focusing on Sexual and Reproductive Health	Dong-Sik Kim
	National Implementation of Sustainable Development Goals(SDGs) in South Korea: Gender-related Targets and Indicators	Eun Ha Chang
	Strengthening Gender Equality Policy Infrastructure in the Asia-Pacific Region (VII): Policy Support for Capacity Building of the Girls	Eun Ha Chang
	2017 Strategic Projects for the Pursuit of Gender Equality	Sun-joo Cho
	Research on Women Friendly City Development Plan by Implementation Stage	Sun-joo Cho
	New Government's Gender Policy: Vision and Tasks	Seung Ah Hong

■ Project Summary

NO	Project Summary
1	<p>Analysis and Evaluation of Gender Budgeting in Korea(VII): In-depth Analysis on Budgeting Program unrelated to Gender</p> <p>Focusing on the "Seemingly Gender-Neutral" fields, evaluate the financial programs' relevance to gender equality, evaluate the validity of programs as programs regarding gender sensitive budgets and accounts, propose a recipe for a leading exemplary management on budgetary documents and balance sheets when a program is selected as a relevant program and management on gender equal results in general</p>
2	<p>Gender-sensitive Analysis of Social welfare-related Projects of the Government Ministries and Measures to Enhance Effectiveness</p> <p>Through in-depth gender sensitive analysis on the governmental financial programs in the field of social welfare, ① construct an exemplary case for drawing up gender sensitive budgetary documents in the field of social welfare and discover new programs ② Bring attention to the effect(improved effectiveness and equity) of the introduction of the gender sensitive budget system ③ suggest an alternative political measure to improve the system's realistic effectiveness</p>
3	<p>Analysis and Evaluation of Local Government Gender Budgeting and Settlement System(III) : An Evaluation of Local Governments' Gender Budget Performance Review and its Policy Implications</p> <p>While studies on gender budgeting systems have been conducted solely for the preparation of gender budgeting balance sheet, local governments are constantly addressing the issue of gender budgeting. The purpose of this study is to identify the problem of gender budget settlement system of local government and to suggest improvement plan</p>
4	<p>Improving the Effectiveness of Gender Impact Analysis and Assessment and Activation of Cooperation system(III): Focusing on Regional Development</p> <p>While seeking measures to reinforce the gender impact analysis and assessment of central administrative agencies that is inactive in regard to gender impact analysis and assessment compared to local government agencies, by determining the cooperation system of organizations executing gender impact analysis and assessments that can be administered in diverse methods, suggest a measure that can improve the cooperation system between political agencies</p>
5	<p>Research on Development of standard model to reinforce Local government's Specific Gender Impact Assessment</p> <p>After observing and recognizing the issue that the management of certain gender impact analysis and assessment is carried on in a lackluster way for policies under the local government's jurisdiction, prepare a recipe to reinforce certain gender impact analysis and assessment on local governments henceforth</p>
6	<p>Improving Policy and Policy Development through the Utilization of Women · Family Big Data</p> <p>Set the fundamental concept of women and family big data, inspect the current condition of utilizing the big data, assess the demonstration of effective policies utilizing the big data, search possibilities for utilizing the big data, establish research and policies for women and families, determine the demands for the big data needed for program developments and discover policy projects for supplying the big data</p>

■ Project Summary

NO	Project Summary
7	2017 Gender Statistics in Korea
	Provide basic data on various gender equality policies and research with Korea's representative gender statistics report
8	A Study on Indicators for National Gender Equality Improvement
	Contribute to the effective operation of the system through providing basic gender sensitive statistic data that is needed to execute the gender impact analysis and assessment and gender sensitive budgetary documents and balance sheets
9	Research on Policy responses on Single-person household under changing family diversity
	Based on the observation that the classification and the definition of family policy must expand as the forms of families become more diversified, expand the family policy that exceeds beyond the traditional family policy and develop a specific policy project
10	Research on Re-establishment of Sustainable Care-service policy(Ⅰ): Diagnosis on Perspectives of Female · Family and Policy Tasks
	Investigate how far care service can go public within the social and institutional limits of the modern Korean society, and suggest a series of care service 'packages' in phases as a concrete alternative political measure
11	10 years evaluation on the 'Building Family-friendly Community' Policy and remaining tasks
	Assess the results and limits of the 'building of a family-friendly community' policy based on the law regarding promotion of constructing a family-friendly social environment, especially the 'constructing of a family-friendly social environment' policy, and propose an alternative political method founded on the policy demand and in-field requests
12	Research on Transition for Youth to Adulthood according to Family class and Policy Responses
	This research is based on the consciousness of the social phenomenon that the inequality among families is connected to inequalities between the youths and how it also leads to gender inequality among them. This study tries to foresee how the polarization of the family hierarchy and economic support of the parents will impact the transition patterns of the youths to their adulthood. And identify policy challenges to respond to changes in family economic support for their young children
13	A Study on the Improvement Plan for Supporting Families by the Introduction of Child Allowance
	The analysis of child support expenditure status, domestic child allowance and related support policy, and family income guarantee system of major foreign countries, suggests the establishment of child allowance system, related allowance, and public assistance
14	An Analysis on Bilingual Competence Development of Married Immigrants and Naturalized Citizens and Application
	Systematically build and review information related to the development and utilization of bilingual competencies of married immigrants and naturalized persons. Propose a plan to advance them into bilingual field

■ Project Summary

NO	Project Summary
15	Korean Longitudinal Survey of Women and Families
	Based on the results of the research conducted up to the previous year, 2017 will identify women's changes based on the panel established up to the 6th year. And analyze the change of women's life according to policy change
16	Hegemonic Masculinity and Changing Lives of Men
	Analyzing the conflicts and difficulties due to the norms of dominant masculinity in male life experiences under changing physical conditions, and suggest implications for the direction of gender equality policy
17	Research on Generational value for Gender-equal future
	By investigating throughout all generations, the young and adults, about their diverse values, such as sexuality, consciousness of gender equality, form of family, preferred life style, prospect on future, etc., that can effect low birthrates, reveal the change in and gaps between generations, and accordingly deduct the consciousness and psychological factor
18	Research on Expanding Women's Political Participation in 2018 Local Election: Focusing on Metropolitan Governments
	Focusing on the election of metropolitan council and its head that especially has a static rate of females, comparatively analyze the performance in legislative activities by male and female members of the legislative body, and regarding female candidates for the head of the council, by analyzing barriers in the nomination and the election process, seek methods that will allow female participation in the position of the head of the council and the roles of women that can contribute to the democratization in local politics
19	Measures to improve Equal rights in Marital property between Remarried family
	Review and analyze legal issues and problems regarding the married pair's properties for reconstituted families in the perspective of gender equal families, and to respond to the changing family values and ageing population, suggest improvement plans for legislations that can improve equality on issues with regard to properties owned by married pairs within reconstituted families
20	Goals for female representation and implementation strategies for the incumbent government
	The study examines the current status of women's representation in the civil service sector, the public sector, military officers, the police, and the private sector in terms of both quantitative and institutional aspects. In addition, carry out a trend analysis based on time-series data on the public sector in order to suggest policy recommendation for the next 5 years
21	Research to Improve Women · Family-related Legislation(V)
	Investigate and analyze both domestic and international legislation on women and family. And support legislative activities of the National Assembly and administration in a gender-sensitive manner
22	A Study on Future Employment Service Strategy for Invigorating Women's Employment
	Study on revitalizing women's employment, and finding out developmental tasks focusing on the direction of new employment market and employment service policy, and to draw up policy tasks to enable synergy effect among local employment service organizations

■ Project Summary

NO	Project Summary
23	Research on Developing Corporate culture Assessment Index to promote Work · Family Balance
	Precisely diagnose corporate culture that becomes the fundamental cause that makes work and family life compatibility difficult, and develop 'work and family life compatible corporate culture diagnostic guideline' to seek measures that can solve the issues
24	Status on Participation of Young women in Vocational training and Policy tasks
	Examine the necessity of vocational training programs specialized for female youth groups, and discover new policy projects through diagnosing demands of vocational training for female youth groups
25	Ways to Improve the Effectiveness of Female Youth Programs Operated by On-campus Career Development Centers
	Analyzes the current status of female college students' specialized programs absorbed into university job centers and seeks ways to support them according to characteristics and types of universities
26	Status and Improvement plan for Human Resources Development of Female workers in Social Economy sector
	Considering the changing state of affairs of employment circumstances regarding women and social and economic importance, examine problems and current conditions on utilizing human resource development for women in social and economic fields, and seek human resource development measures to promote the expansion by and utilization of women resources in social and economic fields
27	Development System based on Competency-oriented Society(II)
	Review the performance of female youths in the occupational world focusing on universities and junior colleges based on NCS, analyze the current state of affairs of the change in the curriculum based on NCS according to one's major in previously mentioned four-year-course colleges and junior colleges, and suggest policy projects to improve the performance of female youths in the labor market
28	Research on Employment Status of Women with Disability and the Support system
	Through analyzing the current state of employment rates of disabled women, analyzing the performance of unemployment and employment of disabled women, comparatively analyzing foreign and domestic employment support policies for disabled women, and so on, prepare a measure to support policies for increasing employment rates of disabled women
29	Achievements and Development plan of Recruitment Target System for Female Manager
	Through a qualitative research regarding not only quantitative results in relation to system of female administrator employment objective, but also the aimed achievement of the system, determine the on-site result that was resulted by the increase in numbers of female administrators, and consequently provide the logical basis in regard to the continuous necessity of the system, and suggest a direction that the 2016 「five-year female administrator employment plan」 will take if it is established

■ Project Summary

NO	Project Summary
30	Korean Longitudinal Survey of Women Managers
	Build up the base materials for discovering policies that supports women entering administrative positions by researching the state of affairs at work, development in experience, working conditions of female administrators, customs or barriers regarding the entry into administrative positions. At the same time, monitor the discontinuation of women administrators' career and examine what factors effect a success or discontinuation in careers
31	Status of Domestic Violence and Tasks: Focusing on Intimate partner violence and Child abuse
	Analyze in depth the occurrence pattern and related factors of domestic abuse in Korea using the data from surveys on the real conditions of domestic violence, and through analyzing the data from surveys on real conditions from 2010 to 2016, discern the changes and qualities of occurrence pattern of domestic violence, provide base materials for domestic violence prevention policies, especially those regarding prevention and intervention of child abuse by parents and spousal abuse.
32	Policy tasks to Enhance Women's Safety across the Life Cycle(II): Focusing on Women's Safety in Public Place
	Analyze risk factors for women, infants and children that can be prominent according to the stages of their life cycles and propose a countermeasure to prepare a foundation for comprehensive countermeasures for safety according to the families' life-cycles
33	A Comparative Study on the Decriminalization of Juvenile Prostitution and Protection
	Investigate the current status and problems of law on juvenile prostitution and youth, And analyze cases of foreign law on prostitution of children and youth and its implication in Korea
34	Research on Ways to Improve the Effectiveness of Policies to Punish Sex Offenders Against Children and Adolescents
	In order to increase the effectiveness of the victim support system, it is necessary to examine the process and problems of the disclosure of personal information and the employment restriction system for sex offenders. And suggest improvement plan
35	A Study on the Support for Women with Mental Disorders who have Suffered Violence
	Analyze the current status of persons with mental disorders and suggest effective support plan
36	Status of Support to Male Victims of Sexual Violence · Domestic Violence and Policy tasks
	In the modern Korean society, the aid system for sexual abuse and domestic abuse victims are specialized in women who constitute the major percentage of the victims, and thus not as easily accessible for male abuse victims. Our research will determine the experience, attributes and needs for support of male abuse victims and accordingly suggest a measure to construct a support system that includes male abuse victims

■ Project Summary

NO	Project Summary
37	A Study on the Introduction of the Restricted Reporting System for Sexual Violence in the Military
	The purpose of this study is to investigate the relationship between sexual harassment and sexual violence in the military, the protection of victims and limitations, the moral responsibility of gender grievance counselor and gender equality counselor, and the dilemma of military reporting system. And give analysis of possibility of introducing notification system of the American military
38	Research on gender and health inequality within the Korean Society
	Provide scientific base materials for establishing a long term and preemptive gender sensitive health equity policy by assessing and anticipate the correlation and related issues between gender inequality and health issues and inequalities in the modern and future Korean society
39	National Implementation of Sustainable Development Goals(SDGs) in South Korea: Gender-related Targets and Indicators
	Analyze the significance of detailed goals and indicators related to gender equality in the SDGs, review the availability of domestic statistics on the relevant indicators, identify the current status, and present a roadmap for implementing gender equality goals in future SDGs
40	Strengthening Gender Equality Policy Infrastructure in the Asia-Pacific Region(VII): Supporting Policy-based for girls' empowerment
	By aiding the government constructing the political base for empowering girls in Asia-Pacific regions within the framework of SDGs, contribute to the increase of the support on Korea's gender equality and reinforce the gender equality policy infrastructure of four partners in the Asia-Pacific region
41	2017 Strategic Projects to Promote Gender-equality
	Support major women's policy projects in order to ensure that they will safely settle on site by applying the clients' various opinions so that substantive equality can be brought about in the citizens' lives, and push forward improvements regarding barriers against the advancement of gender equality by enhancing the practical network with national and local government's administration
42	Research on Women Friendly City Development Plan by Implementation Stage
	To ensure that women-friendly cities are sustainable and implemented in local policy and development processes, propose development plans for designing women-friendly cities and its afterwards
43	New Government's Gender Policy: Vision and Tasks
	Presenting the vision and policy task of the new government's women's policy centered on 11 areas including labor, family, work-family balance, caring, gender mainstreaming, women's representation, safety, gender violence, health, law and peaceful and unification

Main Achievements



■ MOU

Institutions and Signed Dates	
Signed MOUs and Follow- ups	<p>New</p> <ul style="list-style-type: none"> • Tunisia, Centre for Research, Studies Documentation and Information on Women (2017. 3. 7): International Conference on Gender Equality and Constitution hosted by KWDI in Seoul (2017. 3. 8.) • Germany, Max Planck Society (2017. 4. 27): Discussion on trilateral development cooperation project ideas among KOICA, Max Planck Society, and KWDI
	<p>Follow-ups</p> <ul style="list-style-type: none"> • Japan, Kyoto Women's University (2016. 8. 24): Co-hosted 「Korea-Japan Symposium on Women: Achievements and Challenges of the Act on Equal Employment」 (2017. 11. 18) • Vietnam Women's Union (2013. 11. 15.): ① Co-hosted the 5th Korea-Vietnam Women's Forum in Hanoi (2017. 6. 28 ~7.1); ② Participated in the KWDI SSAGE (Set and Share Agenda for Gender Equality) Workshop in Seoul (2017. 9. 4.~ 9. 9) • Asian Development Bank (ADB) (2017. 6.): Co-hosted the regional seminar on 「Gender Equality in Climate Change and Disaster Risk Management: Weathering an Uncertain Future」 in Seoul (2017. 7. 26~7. 28, KWDI International Conference Hall, approx. 100 participants) • China, Shanghai Tech University (2016. 6. 20.): Presentation on "Policy Considerations for Strengthening the Safety of Women according to Life Cycle: International Perspective" (2017. 6. 23) • UN Women Regional Office for Asia and the Pacific (2016. 11. 15.): Conducted the joint research on SDGs 5 baseline publication (2016. 6~2017. 9. 30) • Cambodia, Life with Dignity (2016. 8. 11): Conducted the joint research and published the report • Vietnam, Institute of Labour Science and Social Affaires (ILSSA) (2014. 8.): ① Conducted the joint research and published the report; ② Participated in KWDI SSAGE (Set and Share Agenda for Gender Equality) Workshop in Seoul (2017. 9. 4.~ 9. 9) • Cambodia, Royal University of Phnom Penh (RUPP) (2013. 6.27): Participated in the KWDI SSAGE (Set and Share Agenda for Gender Equality) Workshop in Seoul (2017. 9. 4.~ 9. 9) • Cambodia, Ministry of Women's Affairs (2015. 9.18): Participated in the KWDI SSAGE (Set and Share Agenda for Gender Equality) Workshop in Seoul (2017. 9. 4.~ 9. 9) • Indonesia, Faculty of Social and Political Sciences, University of Indonesia (2011. 5. 3): Participated in KWDI SSAGE (Set and Share Agenda for Gender Equality) Workshop in Seoul (2017. 9. 4.~ 9. 9) • Vietnam, University of Labour and Social Affairs (2015. 2. 6): Participated in the KWDI SSAGE (Set and Share Agenda for Gender Equality) Workshop in Seoul (2017. 9. 4.~ 9. 9)

1. 2017 Research Project Goals
2. Main Research Trend
3. English Paper
4. Main Achievements
5. Major Activities and Events

Major Activities and Events



■ Policy Forum on Gender Equality

Ordinal no	Date	Title	Main host(s)
111	2017.12.06	The Term 'Single Mom': Between its Identification and Discriminative Effect	KWDI, Seoul Human Rights Committee, Seoul Gender Equality Committee
110	2017.09.18	Status of Gender Mainstreaming Policies and the Way forward	Ministry of Gender Equality and Family, KWDI
109	2017.07.06	Status and Remaining Tasks of Gender Equality Policies	KWDI
108	2017.06.21	Status of Women's Employment by Life-Cycle and Policy Considerations	KWDI
107	2017.04.14	Status and Protection of Victims of Domestic Violence and Improvement in Judicial Investigation System	Ministry of Gender Equality and Family, KWDI
106	2017.04.13	Status of Female Managers in the Public Sector and Policy Tasks	Member of the National Assembly Kim Jin-pyo, Member of the National Assembly Shin Yong-hyeon, KWDI, Seoul Association for Public Administration



■ International Conferences

	Date	Title	Main host(s)
1	3. 8	International Conference on Gender Equality and Constitution	KWDI, Centre for Research, Studies Documentation and Information on Women (Tunisia), Member of the National Assembly, Jeong Choun-sook
2	4.20	KWDI 34th anniversary celebration seminar, "Visions and Future Directions of Gender Equality Policies"	KWDI
3	6.14 ~15	Workshop, "Policies and Governance for Gender Equality and Competitive Female Labor in Asia"	KWDI, Asian Development Bank Institute
4	6.23	2017 International Conference on Women and Safety	KWDI
5	7. 4	The 9th Asia-Pacific Forum on Development and Gender, "Gender and Sustainable Development Goals (SDGs) : Regional and National Perspectives"	KWDI
6	7. 5	2017 KWDI International Conference on Preventing Gender-Based Violence: Safeguarding Children and Adolescents from Sexual Abuse Online and Offline	KWDI
7	7.26 ~ 28	A regional seminar, "Gender Equality in Climate Change and Disaster Risk Management: Weathering an Uncertain Future"	KWDI
8	9.22 ~9.23	International Conference on Women, Peace and Security in the 21st Century	KWDI, Friedrich Ebert Foundation, Member of the National Assembly Nam In-soon
9	10.17	KWDI International Conference on Gender Equality, Change in Family and Family Policy	KWDI
10	11.2.	2017 International Conference on Gender Budgeting and Gender Equality	KWDI
11	11.9	The 19th Forum on Gender and Law, Exploring the Ways to Narrow Gender Pay Gap: Experiences of Switzerland, Belgium, and Japan and Their Implications	KWDI
12	11.18	Korea-Japan Symposium on Women: Achievements and Challenges of the Act on Equal Employment	KWDI, Kyoto Women's University

III 2018 Research Trend

1. Key Goals for 2018
2. Key Research Projects and Their Directions
3. 2018 Priority Research Projects
4. 2018 Project Summary

The First Partner
for Gender Equality



Key Goals for 2018



- Enhancing the effectiveness of measures for gender equality and gender mainstreaming
- Developing a family policy agenda and alternatives in response to the current period of low fertility rates and population aging
- Strengthening policies for women's employment and the cultivation of human resources in order to prepare for the Fourth Industrial Revolution
- Strengthening policies for the prevention of gender-based violence as well as research into and policies for improving health and safety from a gender-focused perspective

Key Research Projects and Their Directions



- Providing a foundation for a society with sustainable gender equality and the spreading of such a culture
 - Enhancing the effectiveness of gender equality through the integration of men into the process
 - Strengthening female representation and leadership in the political, social, and public sectors
 - Presenting the current government's policy directions toward gender equality and suggesting alternatives based on gender equality
 - Developing tasks related to policies about women and the family in preparation for the re-unification of the peninsula
- Enhancing gender equality in national policies and the effectiveness of measures related to gender mainstreaming
 - Strengthening the feedback structure for gender impact analyses and assessment of central and local governments in order to improve governmental policies
 - Strengthening the capabilities of policy players for the promotion of gender equality
 - Creating effective linkages between gender-impact analyses and assessment and gender-sensitive budgets
 - Vitalizing the gender-sensitive budget system in order to establish a foundation for the pursuit of gender equality
 - Production and application of basic statistics in the pursuit of gender equality
 - Production and application of big data in order to understand trends in policies toward women

Key Research Projects and Their Directions



- **Developing a family policy agenda and alternatives to the current period of low fertility rates and population aging**
 - Developing inclusive policies of family support in the current environment of increasing low fertility rates
 - Developing family policies in response to diversifying family patterns
 - Establishing care support policies in response to changing family patterns
 - Building a family-friendly environment for child birth and rearing through diffusing family-friendly institutions
- **Expanding women's employment and improving the current situation of gender discrimination in the labor market**
 - Improving the current conditions of gender inequality in the labor market, such as gender pay gap
 - Eliminating blind spots in work-family balance policies and improving the workplace culture
 - Increasing employment of various groups of women, including female youths
 - Increasing managerial and decision-making positions for women in the private sector
- **Developing policies to cultivate and utilize female human resources, based on life-cycle stages, in preparation for the Fourth Industrial Revolution**
 - Creating jobs for women in response to the fourth Industrial Revolution
 - Supporting a future-oriented cultivation of female human resources and gender-equality-oriented career guidance in secondary and higher-education institutions
 - Developing future-oriented female leadership in the public and private sectors
 - Supporting delivery systems and governance in order to prevent career discontinuation and to vitalize re-employment
- **Strengthening the effectiveness of policies for the prevention of gender-based violence and the promotion of rights**
 - Evaluating the achievements and enhancing the effectiveness of gender-based violence prevention policies
 - Identifying blind spots in gender-based violence victimization and developing solution plans for it
 - Modifying laws and regulations related to women's rights and the family and enhancing their effectiveness
 - Presenting plans to promote the rights of single mothers
- **Promoting women's safety and strengthening women's healthcare**
 - Establishing basic policy directions for women's safety, focusing on their everyday lives and building infrastructure.
 - Systemizing women's health care and promoting maternity protection
 - Doing research on health policies, based on gender equality, in order to eliminate health inequality between women and men
- **Internationalization of research ability and vitalization of ODA (Official Development Assistance) projects**
 - Ongoing research exchanges and dissemination of all research results through international policy networks

2018 Priority Research Projects



No	Project Summary
1	<p>Plans for Enhancing the Effectiveness of Gender-Impact Analyses and Assessments and the Vitalization of an Inter-Institutional Collaboration System (IV): A Focus on State R&D Projects</p> <ul style="list-style-type: none"> ■ Developing methodologies for gender impact analyses and assessments of state R&D projects; presenting research procedures from a gender-sensitive perspective; providing policy plans that reflect such procedures in guidelines for gender-impact analyses and assessments <ul style="list-style-type: none"> • Analyses of domestic and overseas examples of the relationship between gender and R&D • Analysis of laws, regulations, and guidelines about R&D (Science & Technology and Agriculture) from a gender-sensitive perspective • Analysis of the current state of basic plans and operational systems of R&D (Science & Technology and Agriculture) from a gender-sensitive perspective • Analysis of the current states and operational systems of R&D projects (Science & Technology and Agriculture) from a gender-sensitive perspective • Survey of project managers' opinions about the gender impact analysis and assessment index (proposal) • Development of a gender impact analysis and assessment checklist and an analysis index for R&D projects • Development of a plan for a procedural cooperation system for gender-sensitive research
2	<p>A Study of Strategies to Respond to Low Fertility Rates from a Gender-Equality Perspective: A Comparison of Korea and Japan</p> <ul style="list-style-type: none"> ■ Comparative study of institutions and cultures in Korea and Japan and an exploration into response strategies to low fertility rates based on gender equality <ul style="list-style-type: none"> • Analysis of policies toward low fertility rates in Korea and Japan from a gender-equality perspective • Survey and analysis of values in Korea and Japan • Providing response strategies to low fertility rates based on this comparative study
3	<p>Women's Job Prospects in Relation to Technological Developments and Counter-Strategies</p> <ul style="list-style-type: none"> ■ Assessing women's job prospects; developing new strategies for increasing women's (I) employment by new technology and engineering system, Developing policies and tasks for responding to the Fourth Industrial Revolution <ul style="list-style-type: none"> • Assessing women's job prospects in relation to the Fourth Industrial Revolution • Developing strategies and policies to develop women's future career in response to the change in demand for skills and new jobs as a result of the Fourth Industrial Revolution • Proliferating gender innovation, beginning with the leading fields in the Fourth Industrial Revolution • Developing job policies in preparation for the shock to women's employment rates in reduced job fields
4	<p>A Study of the Actual Conditions of Online Sexual Violence Victimization and Plans for the Protection of Victims</p> <ul style="list-style-type: none"> ■ Examination and analysis of the concept and definition of online sexual violence; understanding the actual conditions of online sexual violence; exploration into legal and policy responses in order to prevent online sexual violence and to protect victims <ul style="list-style-type: none"> • Examining the concept and scope of online sexual violence • Analyzing the current status of online sexual-violence victimization • Surveying the actual conditions of online sexual violence • Research on foreign examples of the prevention of online sexual violence and the protection of its victims • Providing legal and policy responses for the prevention of online sexual violence and the protection of victims

2018 Project Summary



■ Basic research project

NO	Project Summary
1	<p>Plan for the Pursuit of Linkages Between Gender Impact Analysis and Assessment and a Gender-Sensitive Budget: A Focus on Government Subsidy Projects for Vulnerable Classes in the Welfare Fields</p> <ul style="list-style-type: none"> • Presentation of plans to improve the methods of filling out gender impact analyses and assessment forms for metropolitan and local governments • Analysis of the propriety of gender-impact analyses and assessments as well as gender-sensitive budgets in government subsidy projects for vulnerable classes in welfare fields; exploration into ways to enhance matching between gender equality measures and achievement goals
2	<p>Gender-Sensitive Analysis of Cultural and Tourism Government Projects and Ways to Improve Their Efficiency : A Focus on Projects Submitting Gender Budget Statements</p> <ul style="list-style-type: none"> • Building best practices for gender budget statements and finding new projects for gender budget statements in the fields of culture and tourism • Emphasis on the effects of the introduction of a gender-sensitive budget system, such as the enhancement of gender equality and project efficiency; the presentation of policy alternatives for the enhancement of system effectiveness
3	<p>Basic Income from a gender perspective and policy implications</p> <ul style="list-style-type: none"> • A study exploring the possibilities and ways to institutionalize Basic Income by analyzing its anticipated effects on women and gender equality
4	<p>A Study of Strategies to Respond to Low Fertility Rates from a Gender-Equality Perspective: A Comparison of Korea and Japan</p> <ul style="list-style-type: none"> • Analysis of policies toward low fertility rates in Korea and Japan from a gender-equality perspective, Survey and analysis of values in Korea and Japan, Providing response strategies to low fertility rates based on this comparative study
5	<p>Gender Inequality in Multicultural Families: Reality and Policy Implications</p> <ul style="list-style-type: none"> • Understanding the structure and reality of gender inequality and its concrete conflict aspects within multicultural families, and in turn presenting specific policy tasks for eliminating and alleviating gender inequality and building more gender-egalitarian relation within multicultural families

■ Basic research project

NO	Project Summary
6	<p>Assessment of Household Labor Time and Methods to Improve Gender Equality in the Standards of Behavior Assessment</p> <ul style="list-style-type: none"> Understanding the structure of gender-based division of labor in household work; developing policy plans to enhance men's household work performance based on empirical studies of actual conditions
7	<p>A Study of Factors for Female Politicians to be elected to win in Local Assemblies in 2022</p> <ul style="list-style-type: none"> Examining determinants for increasing female politicians in local assemblies through the seventh local elections in 2018; providing policy plans to support female politicians
8	<p>Study of Institutionalized measures against sexist hate speech</p> <ul style="list-style-type: none"> Proposing legal and social regulation plans to be applied in reality, with the understanding that such a social agreement to regulations is important for preventing misogynistic expressions
9	<p>A Study of the Relationship Between Gender Inequality and the Quality of Men's Lives</p> <ul style="list-style-type: none"> Illustrating the necessity of men's participation in activities to build a society with gender equality, by illuminating the positive impacts of gender equality on men's lives and deducing its implications in policy plans
10	<p>Development of Revised Korean Gender Egalitarianism Scale II: Setting Criteria for Standardization and Production of a Manual for Tests</p> <ul style="list-style-type: none"> Finalizing test tools and providing criteria through a large-scale offline survey as a follow-up study to the 2016 study—A study for the development of Revised Korean Gender Egalitarianism Scale I: Basic Study for the Test Propriety
11	<p>Supporting Single Mothers after Pregnancy and Childbirth</p> <ul style="list-style-type: none"> Pointing out the problems accompanying the lack of properly phased protection and support for single mothers through pregnancy, childbirth, and childrearing; providing policy plans to improve them
12	<p>A Study of the Actual Conditions of Online Sexual Violence Victimization and Plans for the Protection of Victims</p> <ul style="list-style-type: none"> Examination and analysis of the concept and definition of online sexual violence; understanding the actual conditions of online sexual violence; exploration into legal and policy responses in order to prevent online sexual violence and to protect victims

■ Basic research project

NO	Project Summary
13	Actual Conditions of Discrimination Against Female Workers During Pregnancy and Childbirth and Development of Policy Tasks
	<ul style="list-style-type: none"> Finding out actual conditions of, disadvantages of, and discrimination against pregnant workers; examining overseas policies for the prevention of discrimination against pregnant women; providing policy plans
14	A Study of the Strategies for Increasing Female Executives in Businesses
	<ul style="list-style-type: none"> Presenting concrete policy plans for increasing the proportion of female Executives in private companies, by identifying barriers to women managers' advancement; understanding what policy-level supports are needed to overcome these conditions
15	A Study of Policy Plans for the Support of Business Women: Focusing on Business Women in the Fourth Industrial Revolution-based Businesses
	<ul style="list-style-type: none"> Providing policy-level support plans to promote growth in women's businesses Establishing concrete support systems to promote the growth of women's businesses
16	Analysis of the Current State of Women's NGOs and Support Plans to Vitalize Them for the Enhancement of Gender Equality
	<ul style="list-style-type: none"> Presenting plans to support the vitalization of women's NGOs, based on an analysis of the current status and actual conditions of women's NGOs charged with pursuing efficient policies for gender equality and the expansion of women's social participation in the period of the Framework Act on Gender Equality
17	Study on the Policy Plans for Gender-Sensitive Career Education
	<ul style="list-style-type: none"> Developing a model to promote gender-sensitive career guidance, and applying it to policies, by discovering the points of intervention for gender-sensitive career guidance within the existing policy environment and linking it with gender-sensitive career education
18	Research Projects on Demand
	<ul style="list-style-type: none"> Providing policy resources for rapidly responding to policy issues; presenting basic resources to strengthen expertise about policy issues and to discover policy agendas

■ General research project

NO	Project Summary
1	Plan for the Effectiveness Enhancement of Gender Impact Analysis and Assessment System and Vitalization of Cooperation Structure IV: A Focus on State R&D Projects
	<ul style="list-style-type: none"> Developing methodologies for gender impact analysis and assessment in state R&D projects; presenting gender-sensitive research procedures; providing policy plans to reflect research results in gender impact analysis and assessment guidelines
2	2018 Gender Statistics System Operation Project
	<ul style="list-style-type: none"> Providing statistical databases easily accessible to both professionals and the general public, by analyzing the current state of Korean women and men, providing various gender-sensitive statistics and operating a gender-sensitive statistical system
3	Analysis and Evaluation of Gender Budgeting in Korea(IV): Plans for the Establishment of Gender-Sensitive Performance Budget Systems Throughout Governmental Departments
	<ul style="list-style-type: none"> Presenting operational plans that can be referred to and modelled after for the re-establishment of program budget systems reflecting the goals of gender equality in each governmental department, by offering concrete plans for long-term institutional reforms
4	Analysis and Evaluation of Local Government Gender Budgeting and Settlement System (IV) : Guidelines for Improving the Outcome Objectives in Local Gender Budget Statements
	<ul style="list-style-type: none"> A study to identify guidelines for deciding adequate outcome objectives in local gender budget statements which reflect each local government's policy environment and the level of gender equality
5	A Study of Ways to Re-establish Sustainable Care Policies (II): Strategies to Pursue Care Policies from the Perspectives of Women and Families
	<ul style="list-style-type: none"> Developing short- and long-term strategies to create care policies for the pursuit of Korean-style care policy models
6	A Study for Effectiveness Enhancement of Women and Family-Related Legislations (IV)
	<ul style="list-style-type: none"> Enhancing the efficiency of gender mainstreaming strategies through modified legislation related to gender mainstreaming; strengthening the legal and institutional foundations for the expansion and development of gender mainstreaming.
7	Gender Inequalities in Health (II) : Focusing on Aging Society in Korea
	<ul style="list-style-type: none"> Exploring plans for gender-sensitive elderly health policies in future society through in-depth gender-sensitive analyses of health inequality, among issues related to aging population in Korea

■ General research project

NO	Project Summary
8	Policy Tasks to Reinforce Women's Safety According to the Stages of the Life-Cycle (III): A Focus on Women's Safety in the Workplace
	<ul style="list-style-type: none"> Establishing the foundation for comprehensive measures for women's safety by analyzing risk factors for women's safety issues that women confront in workplaces, according to the characteristics of the stages of the life-cycle, industry, and jobs, and by analyzing their experiences and needs for safety education
9	Women's Job Prospects in Relation to Technological Developments and Counter-Strategies (I)
	<ul style="list-style-type: none"> Assessing women's job prospects; developing new strategies for increasing women's employment by new technology and engineering system, developing policies and tasks for responding to the Fourth Industrial Revolution
10	Sectoral Strategy Development for the Solution of Gender Disparities (I): Gender Disparities in the Labor Market
	<ul style="list-style-type: none"> Identifying and presenting major policy tasks for women and the family for the future solution of gender disparities, by developing sectoral strategies for the solution of gender disparities, which are severely lacking by international standards
11	2018 Strategic Projects for the Pursuit of Gender Equality
	<ul style="list-style-type: none"> Projects bridging research and actual policy in order to achieve practical equality in people's everyday lives. The goal of identifying blind spots in agendas and policies in order to apply major women's policy research achievements to fields and to enhance the level of perception of policies by responding to the voices of diverse policy clients

■ Collaborative research project

NO	Project Summary
1	Improvement and Discovery of Policies Through the Utilization of Big Data About Women and Families
	<ul style="list-style-type: none"> Exploring ways to utilize big data in policies about women and families, as these tools are already used in the fields of health and transportation; deducing policy improvements through pilot analyses in the health and safety; exploring future improvement plans through pilot analyses by linking private and public sector data

■ Panel project

NO	Project Summary
1	Korean Longitudinal Survey of Women and Families
	<ul style="list-style-type: none"> Producing basic data to establish comprehensive policies for women and families through a survey of various aspects of Korean society, such as low fertility rates, an aging population, child-care, work-family balance, and a family-friendly social environment
2	Korean Women Manager Panel
	<ul style="list-style-type: none"> Gathering basic data for the discovery of policies supportive of women's advancement to managerial jobs, by examining female managers' actual working conditions, career development, workplace environments, and customary practices and barriers in their advancement

■ Occasional research project

NO	Project Summary
1	Survey on Abortion Status and Awareness of Women
	<ul style="list-style-type: none"> After the National Petition for legalizing abortion and the use of Mifegyne, the study seeks to present the result of the survey to understand the women's experience of abortion and its awareness

IV KWDI Publications

The First Partner
for Gender Equality



Introduction to Major Publications



Research Projects



Research Achievement Pocket Book



KWDI Abstract Collection



Issue Paper



List of Research Achievements of Past 5 Years



Gender Review



Women's Studies



GSPR



KLoWF



Gender and Law Brief



Gender Impact Assessment and 100 Cases



Gender Statistics



Date of Publication 18th April, 2018 **Publisher** InSook Kwon

Publishing Agency 225 Jinheung-ro, Eunpyeonggu, Seoul, Korea, Korean Women's Development Institute

TEL. 82-2-3156-7000 eng.kwdi.re.kr

Planning Center for Strategic Projects for Gender Equality **Printing** Seobo Media TEL.82-2-2253-7800



The First Partner for Gender Equality
www.kwdi.re.kr

