

---

# ANNUAL REPORT 2023-2024

KOREAN WOMEN'S  
DEVELOPMENT INSTITUTE

NOW  
NOW  
NOW

# CONTENTS

---

## **I** Introduction **04**

- 1. Mission and History 05
- 2. Organization 06
- 3. Vision and Goals 07

---

## **II** 2023 Research Activities **08**

- 1. Priority Research Projects 09
- 2. Research Projects 10
- 3. Dissemination Activities 13

---

## **III** 2024 Research Activities **16**

- 1. Research Goals and Directions 17
- 2. Priority Research Projects 18
- 3. Research Projects 19

---

## **IV** KWDI's Publications **21**

- 1. KWDI's Major Publications 22
- 2. KWDI Social Media 23

# Publication Remarks

---



Greetings! I am Jongsoog Kim, President of the Korean Women's Development Institute(KWDI).

Launched in 1983, KWDI marked the 40<sup>th</sup> anniversary of its foundation in 2023.

KWDI has contributed to establishing national policies for gender equality and to making the society a happier place to live, through diverse research activities.

KWDI publishes an annual report every year to share information on our research activities and trends.

In 2023, KWDI performed research with the aim of, first, developing new gender equality policy tasks in consideration of the political and social changes, second, establishing policy tasks to eliminate gender-based violence and disseminate gender equality awareness, third, setting policy tasks in response to the pandemic, digital transformation and the economic structural changes, and fourth, developing policy tasks in consideration of the demographic changes and widening diversity of family household structures.

In 2024, KWDI will continue our research activities based on practicality, innovation and evidence so that the policy issues facing our society will be addressed through the value of gender equality.

KWDI will serve as a world-renowned research institute of gender equality and family policies to lead a sustainable society.

We look forward to your support and encouragement.

Thank you.

A handwritten signature in black ink, consisting of stylized Korean characters, likely '김종수' (Kim Jongsoo).

President of the Korean Women's Development Institute



ANNUAL REPORT 2023-2024

# Introduction

1. Mission and History
2. Organization
3. Vision and Goals

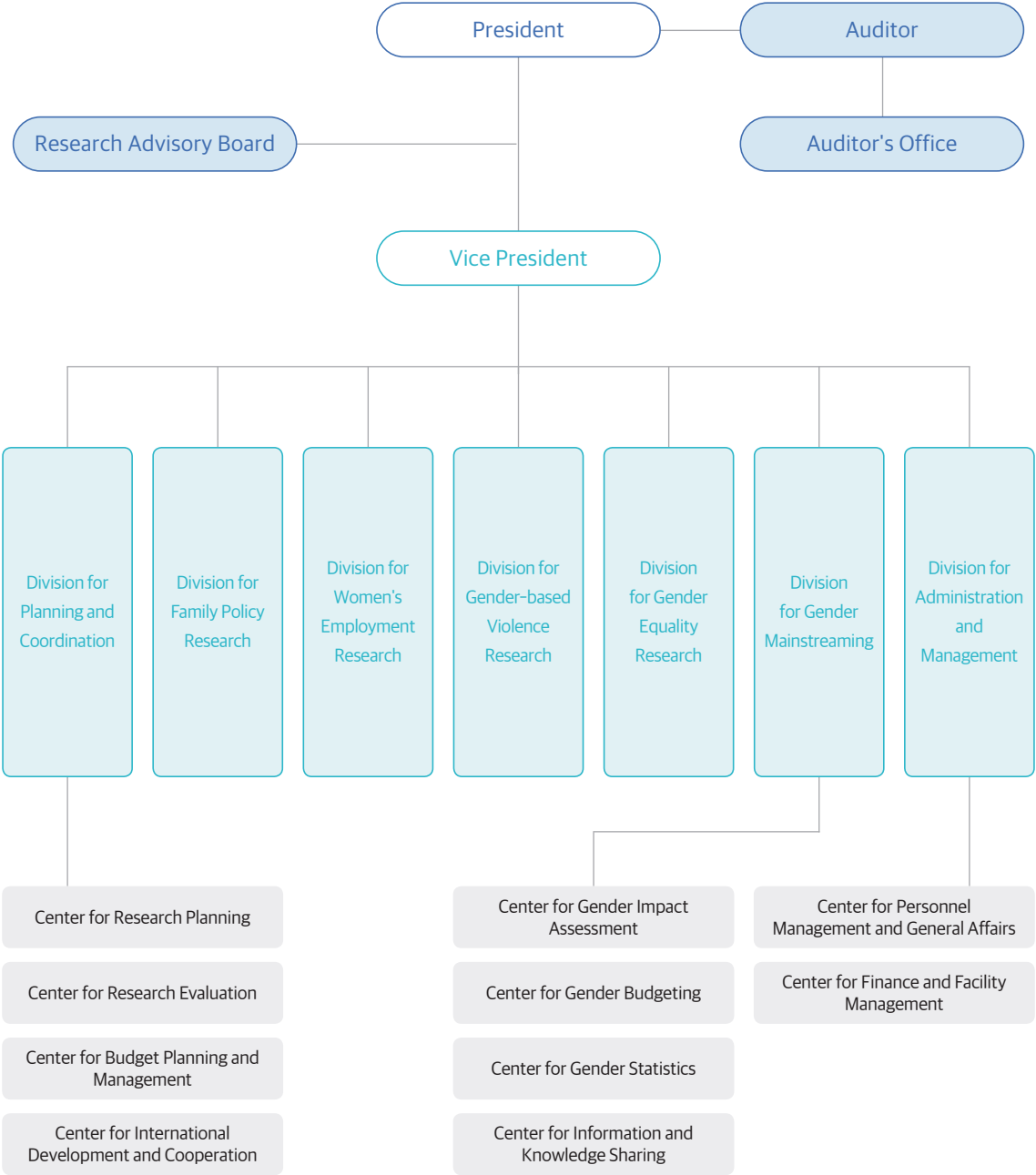
## | Mission |

To contribute to the establishment of national gender equality policies for realization of gender-equal society and to the enhancement of citizen happiness.

## | History |

<p><b>2014-Present</b></p> <p>Deepening and expanding research for the promotion of gender equality policies</p>	<ul style="list-style-type: none"> <li>2024 Inauguration of the 17th President, Jongsoog Kim (Jan 25)</li> <li>2023 Outsourced operation of 'Future Education Gender Equality Taskforce' by the Ministry of Education</li> <li>2022 Outsourced operation of 'Center for Gender Equality Policy and Strategy' by the Ministry of Culture, Sports and Tourism (~2023)</li> <li>2021 Outsourced operation of 'Center for Prevention of Violence Against Women' by the Ministry of Gender Equality and Family Supported operation of 'Consultative Council for Gender Budgeting' (ongoing)</li> <li>2020 Constructed and outsourced operation of 'Statistics on Violence Against Women' by the Ministry of Gender Equality and Family</li> <li>2017 Certified as 'Family-friendly Corporation' by the Ministry of Gender Equality and Family (December 1)</li> <li>2014 Conducted research on the Establishment of the 1st Basic Plan for Gender Equality Policy(2015~2017), (3rd plan: 2023~2027)</li> </ul>
<p><b>2007-2013</b></p> <p>Expansion of policies for women and family &amp; Establishment of a foundation for gender mainstreaming policies</p>	<ul style="list-style-type: none"> <li>2012 Designated as 'Center for Gender Impact Assessment' by the Ministry of Gender Equality and Family Outsourced operation of 'Center for Family Policy Strategy' by the Ministry of Gender Equality and Family (ongoing)</li> <li>2009 Established Gender-Sensitive Statistical System (ongoing)</li> <li>2008 Published <i>Gender Statistics in Korea</i> (ongoing)</li> <li>2007 Korean title of the institute changed from 'Korean Women's Development Institute' to 'Korean Women's Policy Institute' (May 11) Established 'Center for Gender Impact Assessment', 'Center for Gender Budgeting' and 'Center for Gender Statistics'</li> </ul>
<p><b>1999-2006</b></p> <p>Establishing a leading position as a specialized research institute for gender equality policies</p>	<ul style="list-style-type: none"> <li>2006 Outsourced operation of the 'Center for Women's Policy Strategy' by the Ministry of Gender Equality (changed as Center for the Gender Equality Strategy, ongoing) Published the first issue of a quarterly magazine <i>Gender Review</i> (Issue 72 published in March 2024)</li> <li>2005 Placed under the supervision of the National Research Council for Economics, Humanities, and Social Sciences</li> </ul>
<p><b>1988-1998</b></p> <p>Establishment of a framework for gender equality policies &amp; Expansion of research and projects</p>	<ul style="list-style-type: none"> <li>1998 Restructured as a policy think-tank specializing in women's policy</li> <li>1997 Conducted research on the Establishment of the First Basic Plan for Women's Policy(1998~2002), (4th plan: 2013~2027)</li> <li>1994 Published <i>Women's Statistics Yearbook</i> (~2007)</li> </ul>
<p><b>1983-1987</b></p> <p>The early stages of gender equality policies &amp; Establishment of a basis for research and initiatives</p>	<ul style="list-style-type: none"> <li>1986 Published Korea's first gender statistics report <i>Social Statistics and Indicators Related to Women</i> (~1993)</li> <li>1983 Established Korean Women's Development Institute (April 21) Published the first issue of a journal <i>The Women's Studies</i> (Vol. 120 published in March 2024)</li> </ul>

| Organization |



## | Vision and Goals |

### Vision

Take a leading role in making the society more sustainable,  
as a leading think-tank of gender equality and family policies

### Mission

Contribute to establishing national gender equality policies for realization of gender-equal society and to enhancing the citizens' happiness (Article 2 of the Articles of Incorporation).

### Goals



### Strategies

- Reinforcement of strategic research for family and low birth rate issues to ensure a sustainable society
- Contribution to creating gender-equal jobs for improvement of economic dynamics and growth potential
- Enhancement of the substantive effectiveness of the gender-based violence prevention policy to realize a safer society
- Improvement of the gender equality impact of national policies
- Wider implementation of the research on gender equality policies by sector
- Leading of gender equality agenda that will help Korea become a global pivotal state
- Establishment of performance-oriented research planning and management process
- Creation of sustainable management environment



ANNUAL REPORT 2023-2024

## 2023 Research Activities

1. Priority Research Projects
2. Research Projects
3. Dissemination Activities



## | Priority Research Projects

Number	Title	Project Manager
1	<b>Analysis of Projects of Family Centers and Measures for Recognizing the Project from a Perspective of Family Changes</b> <ul style="list-style-type: none"> <li>▶ Analyze the current Family Center Program from the perspective of family changes and develop workable reorganization measures in collaboration with the field.</li> </ul>	Soyoung Kim, Research Fellow
2	<b>Conceptualization of Intimate Partner Violence as Gender-Based Violence and Exploration of the Direction of Countermeasures</b> <ul style="list-style-type: none"> <li>▶ Attempt to conceptualize intimacy-based gender violence in the Korean socio-cultural context through a theoretical and empirical review and analysis of the forms and cases of intimate relationship violence, and explore ways to respond to it in light of future changes in demographic and social structure.</li> </ul>	Hyojung Kim, Associate Research Fellow
3	<b>Digital Transformation and Gender Gap in the Labor Market</b> <ul style="list-style-type: none"> <li>▶ Identify the status of the gender gap caused by digitalization of industries by analyzing the gender gap in the labor market in terms of employment, jobs, and wages, focusing on industries where digitalization is causing changes in the female labor market, and identify sector-specific policy recommendations that can resolve gender gap.</li> </ul>	Jongsoog Kim, Senior Research Fellow
4	<b>A Study on Changes in Voting Behavior and Policy Voting of Women Voters by Generation</b> <ul style="list-style-type: none"> <li>▶ Analyze the voting behavior and political participation of women voters by gender and generational factors, examining the differences, characteristics, and changes in their voting behavior in terms of policy voting, and explore the sustainability of the feminist vote in Korea in the future by analyzing the causes of gender differences in voting behavior, the factors that affect the mobilization of “2030” women voters, and the differences and changes in voting behavior by generation within women voters.</li> </ul>	Eun Kyung Kim, Research Fellow
5	<b>A Study on Gender-mainstreaming Strategy in Korea(II): With a Focus on the National Basic Livelihood Security System(NBLSS, Korean Social Assistance Scheme)</b> <ul style="list-style-type: none"> <li>▶ Select the National Basic Livelihood Security System, one of the core public assistance systems in the field of social security, to analyze the actual application of the integrated gender mainstreaming management model and present gender inequality related issues in the form of policy tasks for each ministry that can be resolved through policy interventions.</li> </ul>	Taek Myeon Lee, Senior Research Fellow
6	<b>Challenges in the Gender Equality Policy for the Future Society (II): Women's Retirement Income Security in the Era of Super Aged Society and Fourth Industrial Revolution</b> <ul style="list-style-type: none"> <li>▶ Identify new challenges for promoting gender equality in old-age income security policies, where gender equality perspectives have not yet been sufficiently disseminated ahead of the transition to an ultra-aged, fourth industrial revolution society.</li> </ul>	Gawon Chung, Research Fellow
7	<b>A Study on the Reorganization of Social Care from a Gender Perspective (II): Seeking a Strategy for Raising the Quality of Childcare</b> <ul style="list-style-type: none"> <li>▶ Explore strategies for quality child care from a gender perspective.</li> </ul>	Young-Ran Kim, Research Fellow

## | Research Projects

### • Labor and Employment

Number	Title	Project Manager
1	A Study on the Job Security in Young Women, as Seen Through Job Transitions	Eun-Jin Oh, Senior Research Fellow
2	Impacts of the 2050 Carbon Neutral Strategy on Women's Employment and Policy Tasks	Min-jung Kang, Research Fellow
3	Digital Transformation and Gender Gap in the Labor Market	Jongsoog Kim, Senior Research Fellow
4	Measures for Promoting Women's Startups in the New Industries	Seung-hyun Lee, Research Fellow

### • Representation, Law, Gender-equal Culture · Awareness, and Education

Number	Title	Project Manager
1	A Study on Changes in Voting Behavior and Policy Voting of Women Voters by Generation	Eun Kyung Kim, Research Fellow
2	Study on Multicultural Acceptance and Intergroup Relations in Transition from the COVID-19 Pandemic	Yi-Seon Kim, Research Fellow
3	A Study on Possible Legal Improvements in the System for the Mandatory Reporting of Sexual Harassment and Sexual Violence in Schools	Seon Young Park, Senior Research Fellow
4	Suggestions for Improving Legal Systems through Analysis of Precedents on Gender-based Violence by Area (I) : Focusing on School-related Sexual Violence	Bok-soon Park, Senior Research Fellow
5	A Study on Legislative Trends on Gender-biased AI Law and How to Respond to Domestic Legislation	Aera Kim, Associate Reserach Fellow

## • Family·Childcare, Low Fertility·Aging

Number	Title	Project Manager
1	Analysis of Projects of Family Centers and Measures for Reorganizing the Projects from a Perspective of Family Changes	So Young Kim, Research Fellow
2	Changes in Elderly Care Brought about by Technological Advancements: Policy Implications from a Gender Perspective	In-Hee Choi, Senior Research Fellow
3	Policy Suggestions for Improving the Work-Life Balance of Single-Parent Households	Mijin Park, Associate Research Fellow
4	Challenges in the Gender Equality Policy for the Future Society (II): Women's Retirement Income Security in the Era of Super Aged Society and Fourth Industrial Revolution	Gawon Chung, Research Fellow
5	A Study on How to Reorganize Social Care from a Gender Perspective (II): Exploring Strategies to Improve the Quality of Child Care	Young-Ran Kim, Research Fellow
6	A Study on Expansion of Incentives for Family-friendly Certified Small Business - Focusing on Tax Support System	Woori Shin, Associate Research Fellow

## • Gender-based Violence, Safety, and Health

Number	Title	Project Manager
1	A Study on Ensuring Healthy and Safe Work Environment: Focusing on Miscarriage and Stillbirth	Dongsik Kim, Senior Research Fellow
2	Women's Mental Health After the Outbreak of COVID-19 and Measures for Policy Improvement from a Gender Perspective	Yong Taek Kim, Research Fellow
3	Conceptualization of Intimate Relationship Violence as Gender-Based Violence and Exploration of the Direction of Countermeasures	Hyojung Kim, Associate Research Fellow
4	Study on Employer's Responsibility to Take Reasonable Steps for Sexual Harassment Complaints	Miyoung Gu, Research Fellow
5	The Safety of Women in Single-Person Households and Policy Measures (II): Focusing on Housing Risks	Mihye Chang, Senior Research Fellow

- Gender Mainstreaming, Gender Impact Assessment, Gender Budgeting, Gender Statistics, Panel Survey, and ODA

Number	Title	Project Manager
1	Research on Development and Utilization of Gender Analysis on Policy	Kyoung Hee Ma, Senior Research Fellow
2	A Study on Mid-to-Long-Term Plan to Analyze and Evaluate Gender Budgeting	
	[2-1] Possible Connections between National Participatory Budgeting System and Gender Budgeting System	Hyo-Joo Kim, Associate Research Fellow
	[2-2] A Study on Vitalization of Gender Impact Assessment for Mid-to-Long-term Plans and the Linkage of Gender-Responsive Budgeting	Dool-Soon Kim, Research Fellow
	[2-3] Gender Budgeting Projects for 2023	Minjung Sung, Associate Research Fellow
3	Operational Report on the Gender Budgeting Council and the Export Committee for Gender Budgeting Assessment	Young-Sook Kim, Research Fellow
4	Gender Equality Promotion Strategy Project to Respond to the Future Society	Wonjung Kim, Associate Research Fellow
5	A Study on Gender-mainstreaming Strategy in Korea(II): With a Focus on the National Basic Livelihood Security System(NBLSS, Korean Social Assistance Scheme)	Taek Myeon Lee, Senior Research Fellow
6	A Study on Diagnosis of Gender Equality Policy Environment and Policy Directions	Kyoung Hee Ma, Senior Research Fellow
7	2023 Operation of Gender Statistics System	Sungmi Jung, Research Fellow
8	2023 Korean Longitudinal Survey of Women & Families	Sun Mi Cho, Associate Research Fellow
9	2023 Korean Women Manager Panel Survey	Eun Jung Kim, Associate Research Fellow

## | Dissemination Activities

### • Signing of MOU

Number	Partners	Date	Details of Cooperation
1	National Committee on Gender Equality, Government of Mongolia	2023.5.	<ul style="list-style-type: none"> <li>▶ Build the foundation of cooperative network to contribute to enhancing gender equality in Mongolia, Korea, and across the globe</li> <li>▶ Conduct co-research projects and joint academic forums on gender equality-related agenda, and exchange human resource for research and education/training</li> </ul>

### • Policy Forums for Gender Equality Promotion

Order	Date	Forum Title	Host
132	7.20	Issues & Future Tasks of the Policies to Tackle the Top 5 Types of Violence	KWDI
133	8.29	Gender-Sensitive Issues & Outlook for the Application and Dissemination of 'Equal Pay for Work of Equal Value'	KWDI
134	11.8	Seeking Countermeasures against Gender Bias of AI and Deep Learning	KWDI
135	11.29	How to Create a Family-Friendly Labor Environment in the Era of Low Fertility	KWDI, Presidential Committee on Aging Society and Population Policy

## • Academic Events

Number	Date	Forum Title	Host
1	6.8	[Forum on Crimes and Women's Safety] Safety Measures for Female One-Person Households	Korean National Police University, KWDI
2	6.29	[The World Congress for Korean Politics and Society 2023 Celebrating the 70 <sup>th</sup> Anniversary of Korean Political Science Association - Joint Session between KWDI and National Institute of Agricultural Sciences] Policies for Korean Female Farmers & Gender-Sensitive Education	KWDI, National Institute of Agricultural Sciences
3	9.7	[Joint Symposium between KWDI and Sentencing Commission] Stalking Crimes and Sentencing	KWDI, Sentencing Commission of the Supreme Court
4	9.14	2023 Academic Symposium on Korean Women Manager Panel Survey	KWDI
5	10.27~28	2023 Regular Autumn Symposium hosted by the Korean Association of Public Finance - KWDI Session	KWDI
6	12.1	[Autumn Symposium hosted by the Korean Association of Women's Studies] The Era of Multiple Disparities and Transition: The Reality, Issues, and Prospect of Women's Labor [KWDI Session] Gender (In)Equality Dynamics & Policies	Korean Political Science Association, Korean Civic Education Institute for Democracy under the National Election Commission, KWDI, Korea Women Parliamentarian Network
7	12.2	[2023 Joint Autumn Symposium between Korean Family Studies Association and KWDI] The Crisis and Reality of Family Care: Is 'Care for All' Possible? [KWDI Session] The Socio Economic Value of Care Work	Korean Family Studies Association, KWDI
8	12.8	2023 Korean Longitudinal Survey of Women & Families Academic Symposium	KWDI

## • Public Hearing

Number	Date	Forum Title	Host
1	1.17	Public Hearing on the Fourth Basic Plan for Multi-Cultural Family Policy	Ministry of Gender Equality and Family, KWDI
2	11.28	Public Hearing on the Fourth National Action Plan for UN Security Council Resolution 1325	Ministry of Gender Equality and Family, KWDI

## • International Academic Events

Number	Date	Forum Title	Host
1	3.8	[The UN CSW 67 Side Event] The Impact of Digitalization and Technology for the Empowerment of Women and Girls: Experiences of the Republic of Korea and Global Partners	Ministry of Gender Equality and Family, eSafety Commission of Australia, KWDI
2	4.20	[International Symposium in Commemoration of KWDI's 40 <sup>th</sup> Anniversary] The Changing Society and the Future of Gender Equality Policy	KWDI
3	5.23	[ISDP-KWDI Joint Webinar for Women, Peace, and Security] UN Security Council Resolution 1325, Two Decades and One Pandemic Later: Comparing Experiences of Sweden and South Korea	Institute for Security and Development Policy of Sweden, KWDI
4	6.22	[Public-Private Joint Forum on Dissemination of 'Gender Equality in Water' in Asia-Pacific Region] The Present and Future of International Development Cooperation of Korea from the Perspective of Gender Mainstreaming in Water	UNESCO International Centre for Water Security and Sustainable Management, KWDI
5	6.28	Online Violence and Women's Participation in the Public Sphere: An Overview of the Problem and Possible Solutions in South Korea	KWDI
6	9.12	[The 15 <sup>th</sup> Asia-Pacific Forum on Development and Gender] Women Peace and Security in the Asia-Pacific: Prospects for Implementation and Cooperation	KWDI
7	9.12	10 <sup>th</sup> Anniversary of Korea-Vietnam Women's Forum	Vietnam Women's Union, KWDI



ANNUAL REPORT 2023-2024

## 2024 Research Activities

1. Research Goals and Directions
2. Priority Research Projects
3. Research Projects



## | Research Goals and Directions

### • Research Goals

#### Developing and Disseminating a Future-Oriented Gender Equality Policy

Developing future gender equality strategies in response to the mega trends of demographic, technological, and climate changes

Developing a sustainable social policy in consideration of the economic dynamics and the changes in gender relations

Developing policy tasks to improve the policy effectiveness in tackling gender-based violence and to spread gender equality awareness

Developing gender mainstreaming convergence strategies in response to the changing gender equality policy environment

### • Research Directions

Directions	Details
Respond to the changes of future environment and the emerging issues of gender equality	<ul style="list-style-type: none"> <li>▶ Develop gender equality issues and policies to respond to the demographic changes and to achieve local community-oriented, balanced development</li> <li>▶ Explore how technology innovation affects gender equality and prepare countermeasures</li> <li>▶ Prepare measures to respond to climate change and disaster situations and to set up women's initiatives</li> <li>▶ Suggest how to improve women's representation and gender diversity</li> </ul>
Restructure social policies in response to the economic dynamics and the diversification of life prospect	<ul style="list-style-type: none"> <li>▶ Ensure stable care policies in response to the changing gender relations in the era of low birth rate and aging society</li> <li>▶ Make policy recommendations in response to the changing family structure and family diversity</li> <li>▶ Prepare gender equality-based labor market policy that respects fair value</li> <li>▶ Prepare policies for women's jobs in response to the transition toward carbon neutrality and digital transformation</li> </ul>
Develop policies to tackle gender-based violence and health issues from gender perspectives and improve gender discriminatory culture of the society	<ul style="list-style-type: none"> <li>▶ Suggest how to respond to diverse types of violence and to establish systematic countermeasures against violence</li> <li>▶ Set measures to prevent gender-based violence and to practically ensure the safety of women</li> <li>▶ Present ways to ensure and promote women's health including their sexual and reproductive health</li> <li>▶ Raise awareness on gender equality and prepare measures to address gender equality issues by generation</li> </ul>
Respond to changes in the gender mainstreaming policy environment and advance relevant policies	<ul style="list-style-type: none"> <li>▶ Reinforce the connection and cooperation among gender equality implementation systems</li> <li>▶ Strengthen gender-sensitive analysis &amp; assessment and promote an effective gender mainstreaming policy</li> <li>▶ Advance the establishment &amp; connection of technology-based database to establish gender equality policies</li> <li>▶ Broaden the influence of gender mainstreaming policies by reinforcing the global network</li> </ul>

## | Priority Research Projects

Number	Title/Summary	Project Manager
1	<b>A Study on HR Management for Realizing Fairness and Gender Equality in Companies</b> <ul style="list-style-type: none"> <li>▶ Identify the current status of corporate HR management, which determines the reward system in the labor market, in terms of how the HR management system combines, conflicts with and reflects the concepts of 'fairness' and 'gender equality.' Prepare measures to shift the paradigm of gender equality policy.</li> </ul>	Min Jung Kang, Research Fellow
2	<b>Awareness on Gender Equality among Youth Politicians, and the Outlook and Tasks for the Changing Political Culture</b> <ul style="list-style-type: none"> <li>▶ Diagnose the gender equality awareness and gender differences among youth politicians, provide an outlook for whether the youth politicians' attitude towards practicing gender equality has an influence on the change of gender-discriminatory political culture of Korea, and present relevant policy measures.</li> </ul>	Eun Kyung Kim, Research Fellow
3	<b>The Current Status of Non-Relative Households and Policy Tasks</b> <ul style="list-style-type: none"> <li>▶ Identify the current status of the recently increasing non-relative households, in terms of the diversity of Korean household structure. Examine the composition of and reasons for the non-relative households, care and support for the non-relative family members, and the current status of non-relative family life. Confirm the necessity for a family policy response.</li> </ul>	Young Ran Kim, Research Fellow
4	<b>A Study on the Relation between Gender Characteristics and Population Decrease in a Region</b> <ul style="list-style-type: none"> <li>▶ Analyze the relationship among gender gap, women's population, and birth rate in a region, particularly a region where population is declining. Prepare policy measures to increase women's population and birth rate in population-declining regions in the future.</li> </ul>	Ki Taek Jeon, Senior Research Fellow
5	<b>A Study on the Measures to Improve the System Supporting Women Victims of Violence, with the Aim of Reinforcing the Integrated Support for the Victims</b> <ul style="list-style-type: none"> <li>▶ Seek ways to improve legal and institutional systems while focusing on how to change the existing support systems based on the individual laws related to violence against women, in order to effectively support women victims of diverse and complicated types of violence.</li> </ul>	Jung Im Hwang, Senior Research Fellow
6	<b>A Study on Reshaping the Social Care from a Gender Perspective(III): Strategies to Close the Gap in Elderly Care in the Era of Aging</b> <ul style="list-style-type: none"> <li>▶ Analyze the implications of the quantitative/qualitative levels of the existing elderly care service on the maintenance/reproduction of the existing gender inequality, based on the gender analysis of the current elderly care. Suggest measures to close the gap in elderly care.</li> </ul>	Kyoung Hee Ma, Senior Research Fellow
7	<b>Challenges in the Gender Equality Policies for Future Society(III): Gender-Sensitive Measures to Improve the Climate Change Policy</b> <ul style="list-style-type: none"> <li>▶ Explore how climate change affects the society and how to respond to the climate change to achieve a sustainable future society, and present and reinforce the basis to implement gender mainstreaming strategies for the national climate change policies.</li> </ul>	Youn Sun Chang, Research Fellow
8	<b>Measures to Improve the Legal System based on the Analysis of Judicial Precedents on Sexual Violence Cases (II): Focusing on the Area of Culture and Art</b> <ul style="list-style-type: none"> <li>▶ Identify the characteristics and problems of legal proceedings and judgments, by analyzing the judicial precedents of sexual violence cases that took place in the culture and art industry.</li> </ul>	Sang-Min Park, Associate Research Fellow

## | Research Projects

### • Labor and Employment

Number	Title	Project Manager
1	Policy Tasks for Ensuring the Rights to Rest among Women Workers with Vulnerable Jobs	Nan Jue Kim, Research Fellow
2	HR Management System and Policy Measures to Implement Fairness and Gender Equality in the Companies	Min Jung Kang, Research Fellow
3	A Study on the Current Working Conditions of Women Workers of Web-based Platforms & Measures for Improvement: Focusing on the Area of Creative and Professional Services	Minho Lee, Associate Research Fellow

### • Representation and Education

Number	Title	Project Manager
1	A Study on How to Improve the Structural Opportunities for Education/Training of Female Core Digital Talents & Education for Their Career Paths	Seung-hyun Lee, Research Fellow
2	Prospect and Tasks for the Gender Equality Awareness among Youth Politicians & Changes of Political Culture	Eun Kyung Kim, Research Fellow

### • Family·Childcare and Low Fertility·Aging

Number	Title	Project Manager
1	The Current Status of Non-Relative Households and Policy Tasks	Young Ran Kim, Research Fellow
2	A Comparative Study on National Cash Allowance Support Systems for Child-Rearing Households	Hyo Jean Song, Research Fellow
3	A Study on the Relation between Gender Characteristics and Population Decrease in a Region	Ki Taek Jeon, Senior Research Fellow
4	A Study on Reshaping the Social Care from a Gender Perspective(III): Strategies to Close the Gap in Elderly Care in the Era of Aging	Kyoung Hee Ma, Senior Research Fellow
5	A Study on Strategies to Innovate Social Services for Realizing a Gender-Equal Society	Eun Jin Oh, Senior Research Fellow
	[5-1] A Study on Strategies to Diversify the Suppliers of Social Services and to Upgrade Women's Jobs	
	[5-2] A Study on the Provision of Social Services in Consideration of Family Diversity and Gender Characteristics of Users, and Blind Spots of Services	

## • Gender-based Violence, Safety, and Health

Number	Title	Project Manager
1	A Study on the Experience and Awareness of Digital Safety among the Youth Generation by Gender	Aera Kim, Associate Research Fellow
2	Gender-Sensitive Analysis on the Judicial Precedents of Digital Sexual Crime Cases: Focusing on the Illegal Camera Filming and Dissemination of the Illegally Filmed Footage	Jeonghye Kim, Associate Research Fellow
3	A Study on Measures to Improve the Support for Women Victims of Violence through Reinforcement of Integrated Support for the Victims	Jung Im Hwang, Senior Research Fellow
4	A Study for Ensuring the Rights of Homeless Women to Be Safe and Healthy from Discrimination and Violence	Dongsik Kim, Senior Research Fellow
5	A Study on the Limits of Laws & Improvement Measures for Protection of Children/ Juveniles from Sexual Abuse	Yeunjoo Chung, Associate Research Fellow
6	Measures to Improve Legal Systems through Analysis of Judicial Precedents on Sexual Violence Cases by Sector ( II ): Focusing on the Area of Culture and Art	Sang-Min Park, Associate Research Fellow

## • Gender Mainstreaming, Gender Impact Assessment, Gender Budgeting, Gender Statistics, Panel Survey, and ODA

Number	Title	Project Manager
1	2024 Gender Budgeting Project	Minjung Sung, Associate Research Fellow
2	Project for Operation of Gender Budgeting Council and Specialized Assessment Committee	Young Sook Kim, Research Fellow
3	Project for Gender Equality Promotion Strategies for Future Society( II )	Seona Kim, Associate Research Fellow
4	A Study on the Integrated Operational Model of Gender Mainstreaming System(III): Developing a Government Organization-based Gender Mainstreaming Model	Wonjung Kim, Associate Research Fellow
5	Challenges in the Gender Equality Policies for Future Society(III): Gender-Sensitive Measures to Improve the Climate Change Policy	Youn Sun Chang, Research Fellow
6	2024 Gender Statistics System Operation Project	Sungmi Jung, Research Fellow
7	2024 Korean Longitudinal Survey of Women & Families	Sungmi Jung, Research Fellow
8	2024 Korean Women Manager Panel	Eun Jung Kim, Research Fellow
9	Prior Study of Family Panel Survey in Response to Low Fertility(I)	Sun Mi Cho, Associate Research Fellow

# IV

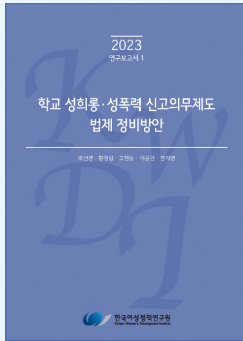
ANNUAL REPORT 2023-2024

## KWDI's Publications

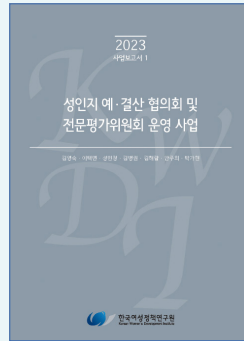
1. KWDI's Major Publications
2. KWDI Social Media

## | KWDI's Major Publications

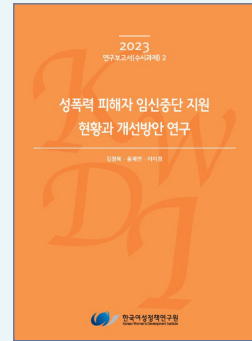
### Research Reports (Basic)



### Research Reports (Multi-year)



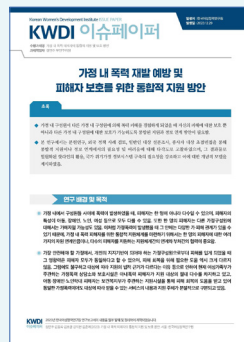
### Research Reports (Occasional)



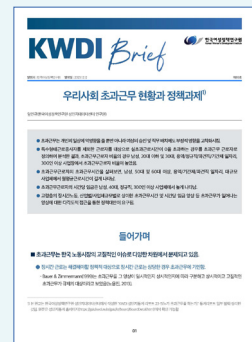
### English Research Reports



### Issue Paper



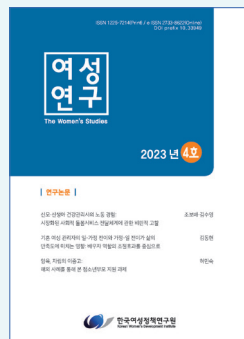
### KWDI Brief



### Gender Review



### Women's Studies



### Annual Report



## | KWDI Social Media

### YouTube



<https://www.youtube.com/kwdi2010>

### Instagram



<https://www.instagram.com/kwdipage>

### Facebook



<https://www.facebook.com/kwdipage>

### NAVER Blog



<https://blog.naver.com/kwdi1983>







---

<b>Date of Publication</b>	May, 2024
<b>Publisher</b>	Jongsoog Kim
<b>Publishing Agency</b>	Korean Women's Development Institute 225 Jinheung-ro, Eunpyeong-gu, Seoul, Republic of Korea, 03367
<b>TEL.</b>	82-2-3156-7000
<b>Design·Printing</b>	Seilfocus



<https://eng.kwdi.re.kr>

The First Partner for Gender Equality