

2019-2020 Annual Report

Korean
Women's
Development
Institute



KWDI

Korean Women's Development Institute

CONTENTS

I . Introduction	04
II . 2019 Major Research Activities	08
III . 2020 Major Research Activities	16
IV . KWDI's Publications	21

Preface



The Korean Women's Development Institute (KWDI) was founded in 1983 as a government-funded research agency under the Prime Minister's Office. Being tasked with conducting comprehensive research on women's policies in Korea and delivering relevant information services, it has since contributed to boosting women's participation in social affairs, enhancing their rights, and leading South Korea to become a more gender-equal country.

KWDI offers information on research trends in gender equality policies, publishing its annual report to make its research achievements more widely known to the general public. The 2019-2020 Annual Report highlights major research activities conducted in 2019 which include eliminating gender gap in the labor market, improving workplace with a gender perspective, shifting the paradigm of policies to deter violence against women, tackling the low birth rate/aging society, promoting gender-equal social values, and gender mainstreaming of policies. The 2019-2020 Annual Report also introduces research tasks that will be conducted in 2020 aimed at seeking to redesign gender equality policy amidst paradigm shift, analyzing gender awareness of the new generation and developing youth policy with a gender perspective, and setting policy agenda based on the socioeconomic effect of gender equality.

In 2020, KWDI will continue to do its utmost to conducting policy and legal research that supports South Korea's transformation towards a more gender-equal society.

Your keen interest and support will be deeply appreciated.

Thank you very much.

Insook Kwon
President of the Korean Women's Development Institute

권인숙

I.

Introduction

- Founding Purpose and History
- Mid-to-long-term Development Goals and Strategies
- Organizational Chart

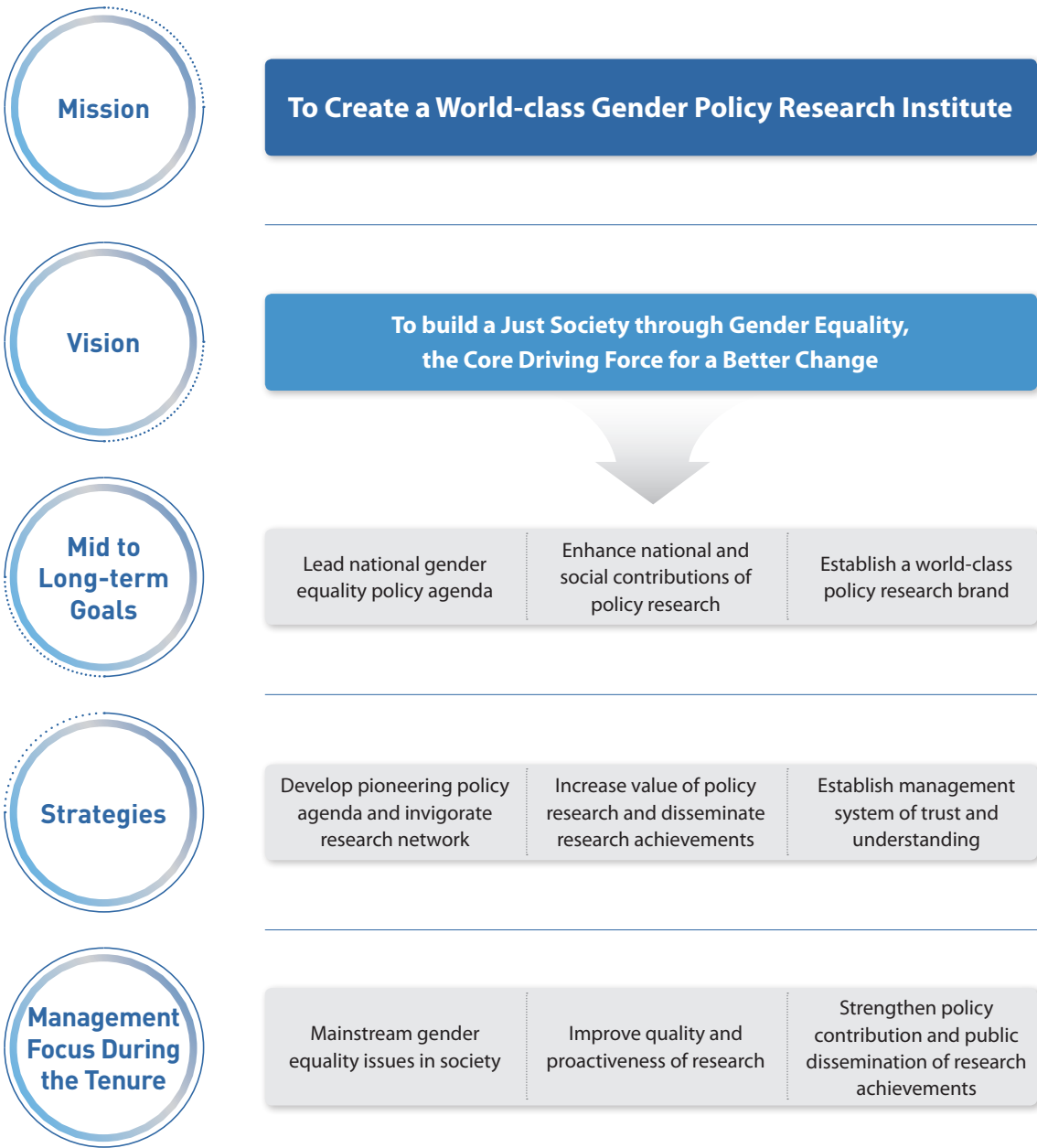
Founding Purpose

Conducting comprehensive research on women’s issues, developing women’s policies, promoting women’s empowerment, and delivering women-related information, KWDI aims to contribute to promoting women’s social participation and their welfare and growth and boosting national development.

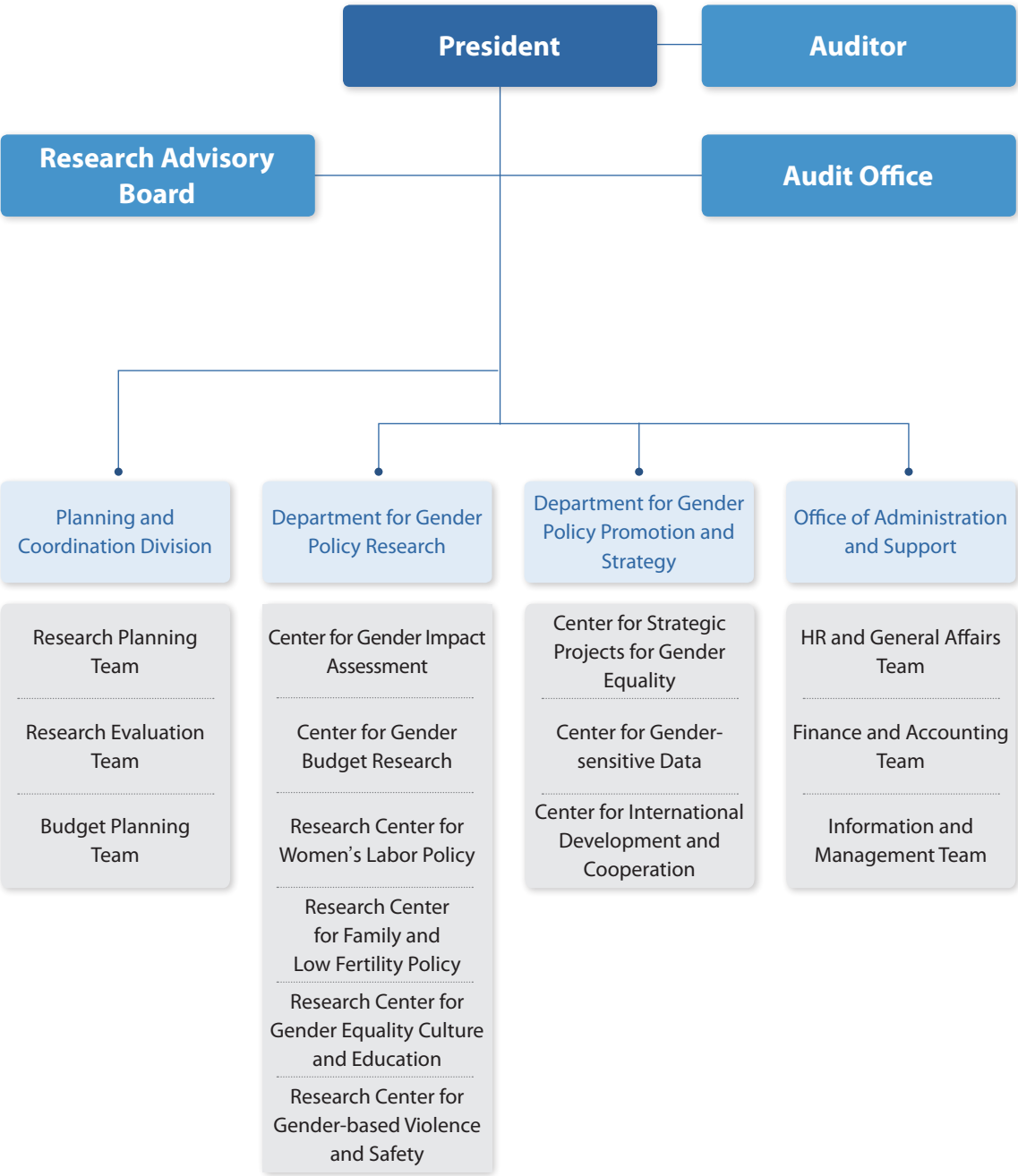
History

Sept. 29, 2017	● Inauguration of the 15th president, Insook Kwon
May 11, 2007	● Korean name of the institute changed from ‘Women’s Development Institute’ to ‘Korean Women’s Policy Institute’
July 01, 2005	● Placed under the supervision of the National Research Council for Economics, Humanities, and Social Sciences
Jan. 29, 1999	● Placed under the supervision of the National Research Council for Humanities and Social Sciences
Feb. 28, 1998	● Placed under the supervision of the Presidential Commission on Women’s Affairs
Sept. 28, 1995	● Opening of the Common Forum for Women (annex building)
Apr. 18, 1991	● Placed under the supervision of the Ministry of Political Affairs (II)
Nov. 20, 1987	● Opening of the institute complex
Apr. 21, 1983	● Establishment of the institute
Mar. 14, 1983	● Announcement of the Enforcement Ordinance of the KWDI Act
Dec. 31, 1982	● Enactment and announcement of the Korean Women’s Development Institute (KWDI) Act

Mid-to-long-term Development Goals and Strategies



Organizational Chart



II.

2019 Major Research Activities

- Major Research Projects
- Research Projects
- Distribution of Research Results

Major Research Projects

Number	Project Name	Project Manager
1	Strategy Development to Eliminate the Gender Gap in the Labor Market(II): Focusing on Working Place Culture	Minjung Kang, Associate Research Fellow
	■ Construct and empirically measure the characteristics of workplace culture in Korea, and analyze how the characteristics relate to gender gaps in the labor market, and thereby explore mid-and- long-term policy directions aimed at creating a gender equal workplace culture while eliminating gender gaps in the labor market	
2	After the Me Too Movement: Current Status of University Student Victims of Sexual Violence in Arts and Culture, and Policy Issues Ahead	Mijeong Lee, Senior Research Fellow
	■ Review the status of sexual harassment and sexual violence victimization (university students in arts and culture) identified after the #MeToo Movement, as well as its countermeasures, and present future policy measures while considering relevant issues	
3	Paradigm Shift in Policy Responses to Low Birthrates (I): An Analysis of the Gendered Life Perspective and Policy Validation of Youth	Eun-Ji Kim, Research Fellow
	■ Explore new policy paradigms for responding to low birth rates in order to address the gendered life perspective among youth	

Research Projects

Gender Mainstreaming

Number	Project Name	Project Manager
1	Policy Recommendations for Gender-responsive Decentralized Governance	Youn Sun Chang, Associate Research Fellow
2	Analysis and Evaluation of Gender Budgeting in Korea	
	[2-1] Ten-Years Evaluation and Future Tasks of Gender Budgeting in Korea(I)	Sun-Joo Cho, Senior Research Fellow
	[2-2] Ways of Linking the In-depth Evaluation System to the Gender Budgeting System(I)	Hyo-Joo Kim, Associate Research Fellow
	[2-3] An Analysis and Evaluation of Local Government Gender Budgeting and Settlement System(V): Performance and Future Tasks	Soo Bum Park, Research Fellow
3	Gender and Governance for the Improvement of Gender Equality: Focusing on Gender Policy Officer	Seon-young Park, Senior Research Fellow
4	Gender-sensitive Analysis of Key National Agendas and Improvement Plans(I): New Deal Project for Urban Regeneration	Yoo-Jin Choi, Research Fellow

Family-Low Fertility

Number	Project Name	Project Manager
1	A Study on the Policy for Family-friendly Social Environment Formation	Gawon Chung, Research Fellow
2	Research on Policy Measures to Improve Patriarchal Family Ritual Systems: Focus on Funeral Culture	Hyo Jean Song, Research Fellow
3	A Study to Enhance the Effectiveness of Women-and Family-Related Legislation(VII): Legal Responses to Diversification of Families	Bok-Soon Park, Research Fellow

Women’s Labor

Number	Project Name	Project Manager
1	Study on Minimum Wage Changes and Male and Female Wage Earners: Discussion on Industries and Regions	Jongsoog Kim, Senior Research Fellow
2	Study on Middle and Old-aged Female Workers’ Economic Conditions: Focusing on Retirement Age	Jihyun Eunice Hong, Associate Research Fellow
3	Change in Jobs for Women Attributed to Technological Development and Counter-strategies(II): Focusing on Platform-based Jobs	Eunjin Oh, Senior Research Fellow
4	Ways to Strengthen Gender-sensitive Labor Supervisory Administration: Focusing on the Prevention and Correction of Gender-based Discrimination and Sexual Harassment	Seon-young Park, Senior Research Fellow
5	Gender Perspective Analysis on Labor Law	Miyoung Gu, Research Fellow
6	Legislative Evaluation of the Act on Promotion of Economic Activities of Career-interrupted Women, Etc	Seon-young Park, Senior Research Fellow
7	Operation of Employment Equality Counseling Centers: Current Status and Suggestions for Improvement	Nanjue Kim, Associate Research Fellow
8	Study on Improving the Female Employment Service System, According to Adoption of Korean Unemployment Allowance	Eunjin Oh, Senior Research Fellow

Gender Equality Culture-Education

Number	Project Name	Project Manager
1	Migrant Women’s Diversity and Policy Approach	Yi-Seon Kim, Research Fellow
2	Research on the Status and Roles of Female Staff in Political Parties with a Focus on Their Experiences of Internal and External Networking	Eun Kyung Kim, Research Fellow
3	Political Consciousness and Empowerment of Young Women in South Korea	Jiso Yoon, Associate Research Fellow
4	The Study on Practical Needs and Strategies for the Gender Awareness Program in School	Yunjeong Choi, Associate Research Fellow
5	Ways of Inter-Korean Exchange and Cooperation for North Korean Women’s Economic Empowerment(I)	Young-Ju Cho, Associate Research Fellow
6	Increasing the Number of Female Managers in Public Services: Status by Occupation and Policy Issues	Mee-kyung Moon, Senior Research Fellow
7	A Study on the Gender Equality in School Educational Environment: Evaluation through the School Gender Equality Index	Yunjeong Choi, Associate Research Fellow
8	Rudimentary Study for the Transition of Discourses on Military Service	Young-Ju Cho, Associate Research Fellow

■ Gender-based Violence-Safety

Number	Project Name	Project Manager
1	Gender-sensitive Analysis of Image-based Sexual Abuse Crime Response	Mi-Hye Chang, Senior Research Fellow
2	Gender and Health Inequality in Korea(III): Focusing on Body Obsession and Aesthetic Plastic Surgery	Dong-Sik Kim, Research Fellow
3	Analysis of the Prosecution's Statistics on Violence against Women(I): Focusing on Crimes of Domestic Violence	Bok-soon Park, Research Fellow
4	Analysis on Prosecutor's Office Statistics on Violence against Women(II): Focusing on Digital Sexual Crimes and False Accusation	Deuk-kyoung Yoon, Research Fellow
5	A Study on the Survey on Violence Against Women: Analysis and Measures for Improvement	Mijeong Lee, Senior Research Fellow
6	Policy Directions for Women's Reproductive Health and Rights after the South Korean Constitutional Court Rules Abortion Unconstitutional	Dong-Sik Kim, Research Fellow
7	Policy Directions and Challenges on Sexual and Reproductive Health and Rights in Korean Women	Dong-Sik Kim, Research Fellow

■ Establishment of Basic Data for Gender Equality Promotion Policies

Number	Project Name	Project Manager
1	Operation of Gender Statistics System 2019	Jae-Seon Joo, Research Fellow
2	Women in Korea 2019	Jae-Seon Joo, Research Fellow
3	Using Big Data on Women and Family for Policy Development and Improvement(III)	Sung Mi Jung, Associate Research Fellow
4	Korean Longitudinal Survey of Women & Families: The 2019 Annual Report	Jae-Seon Joo, Research Fellow
5	Korean Women Manager Panel 2019	Eunjin Oh, Senior Research Fellow

■ Gender Equality Promotion Strategies and International Cooperation

Number	Project Name	Project Manager
1	Strategic Projects for Gender Equality 2019: Finding and Disseminating Gender Equality Agenda	Yoo-Jin Choi, Research Fellow
2	Projects for International Cooperation	Eun Ha Chang, Associate Research Fellow
3	Review of Global Agenda on Gender Equality and South Korea's Experience	Eun Ha Chang, Associate Research Fellow

Distribution of Research Results

■ Conclusion of New MOUs

Number	Partners	Date	Activities
1	Center for Nepal and Asian Studies (CNAS), Tribhuvan University, Nepal	May 30, 2019	<ul style="list-style-type: none">• Coordinate joint research, publication, conferences, seminars, symposiums, lectures, and relevant exchanges of researchers• Conduct comparative research and collaborative research projects on gender in Nepal and Korea• Exchange research and project information
2	Institute for Family and Gender Studies (IFGS), Vietnam [Renewal of the MOU]	June 27, 2019	<ul style="list-style-type: none">• Share knowledge and experience relevant to women• Conduct collaborative or comparative research on women, and exchange relevant information• Coordinate joint seminars and conferences on the common areas of interest, and exchange researchers of relevant fields
3	Co-innovation Center for Korean Peninsula Studies, Yanbian University	July 26, 2019	<ul style="list-style-type: none">• Explore collaborative measures on policies for the resolution of problems in the Korean Peninsula and also for the development, prosperity, and gender equality in Northeast Asia

■ Gender Equality Promotion Policy Forums

Wave	Date	Event Name	Host
116	May 15, 2019	Performance and Evaluation of the Moon Jae-in Administration's First Two Years: Focusing on the Policies for Tackling Gender-based Violence	■ KWDI
117	July 19, 2019	A Gender Analysis of False Accusations for Sexual Violence and New Categorization for the Classification of Sexual Crimes	■ Supreme Prosecutor's Office ■ KWDI
118	Aug 20, 2019	The Operation and Future Tasks for Sexual Harassment and Sexual Violence Report Centers After the #MeToo Movement	■ KWDI
119	Dec 11, 2019	Discussions on Inclusion, Fairness, and Gender: Focusing on the Perception and Experience of Youth	■ National Research Council for Economics, Humanities and Social Sciences ■ KWDI

■ Conferences, Seminars, and Workshops

Number	Date	Event Name	Host
1	Jan 17, 2019	2019 Academic Forum: Changes in Population Policies in China and the Comparison of Unmarried Women's Values on Marriage and Childbirth between Korea and China	■ KWDI
2	Feb 18, 2019	【24th Gender and Legislation Forum】Enactment of the Violence Against Women Act, Its Evaluation and Challenges	■ KWDI ■ Rep. Choonsook Jung
3	Feb 22, 2019	Discussions on Child Care Support Policies: Directions for the Sustainable Development of Child Care Support Projects	■ Rep. Choonsook Jung ■ KWDI ■ Children and Women's Human Rights Policy Forum of the National Assembly
4	Mar 28, 2019	【15th Forum on Low Fertility and Population Aging】Issues and Direction for the Promotion of the Universal Use of Child Care Leave System	■ Presidential Committee on Aging Society and Population Policy ■ KWDI
5	Apr 18, 2019	【KWDI's Special Seminar on its 36th Anniversary】2019 Analysis on Changing Masculinity: Towards the Expansion of Gender Equality Policies	■ KWDI
6	Apr 27, 2019	2019 Joint Spring Conference by Korean Association of Gender and Law and KWDI: Changes in the Paradigm of Criminal Justice After the #MeToo Movement	■ Korean Association of Gender and Law ■ KWDI
7	May 09, 2019	From Punishment to Guarantee of Rights: The Implications and Policy Issues of the Constitutional Nonconformity Adjudication of Abortion Crime	■ KWDI
8	May 30, 2019	【18th Forum on Low Fertility and Population Aging】Overseas Cases and Measures for Embracing Family Diversity	■ Presidential Committee on Aging Society and Population Policy ■ KWDI
9	July 26, 2019	1st Forum on the Performance Management and Dissemination of Gender Budgeting	■ Ministry of Gender quality and Family ■ KWDI
10	Aug 21, 2019	After the #MeToo Movement, Changes and Challenges in the Policies to Prevent Sexual Harassment and Sexual Violence in the Culture and Arts Circles	■ KWDI
11	Aug 22, 2019	Discussions on Multicultural Policy: How to Educate the Next Generation – Focusing on the Children of Multicultural Families	■ The Parliamentarian's Society of the Republic of Korea ■ Gender Equality and Family Committee of the National Assembly ■ KWDI
12	Aug 29, 2019	DMZ International Forum on the Peace Economy (Separate Session): Peace Economy and Women on the Korean Peninsula	■ National Research Council for Economics, Humanities and Social Sciences ■ Korea Institute for International Economic Policy ■ KWDI

Number	Date	Event Name	Host
13	Sep 05, 2019	Academic Symposium on the New Leap for the Korean Women Manager Panel (2007-2019)	■ KWDI ■ Korean Women Manager Panel
14	Sep 06, 2019	2019 Academic Symposium on the Korean Longitudinal Survey of Women and Families	■ KWDI ■ Korean Longitudinal Survey of Women and Families
15	Sep 19, 2019	2nd Forum on the Performance Management and Dissemination of Gender Budgeting	■ Ministry of Gender Equality and Family ■ KWDI
16	Oct 12, 2019	【25th Gender and Legislation Forum】20 Years of Sexual Harassment Regulations, Current Status and Future Direction	■ National Human Rights Commission of Korea ■ KWDI ■ Korean Association of Gender and Law
17	Oct 16, 2019	2019 Forum for Gender Equality: Changes in Local Autonomy and Implementation on Gender Equality Policy	■ Jeju Special Self-Governing Province ■ KWDI
18	Oct 24, 2019	3rd Forum on the Performance Management and Dissemination of Gender Budgeting	■ Ministry of Gender Equality and Family ■ KWDI
19	Nov 20, 2019	2019 Central Gender Impact Assessment Center Legislation Workshop: A Study on the Improvement of the Gender Impact Assessment Act	■ Ministry of Gender Equality and Family ■ KWDI
20	Nov 20, 2019	2019 Women and Big Data Symposium	■ KWDI
21	Nov 28, 2019	Gender-based Violence Prevention Forum: Sexual Harassment and Sexual Violence in the Culture and Arts College Education Programs - What Can be Done?	■ KWDI
22	Dec 05, 2019	Policy Discussions on the Performance Management and Dissemination of Gender Budgeting	■ Rep. Seung-hee You ■ Rep. Choonsook Jung ■ Rep. Yong Hyeon Shin ■ Rep. Yeong-gug Yeo ■ Ministry of Economy and Finance ■ Ministry of Gender Equality and Family
23	Dec 12, 2019	【21st Forum on Low Fertility and Population Aging】A Solution to the Low Birth Rate – Gender Equality is the Answer	■ Presidential Committee on Aging Society and Population Policy ■ KWDI
24	Dec 18, 2019	New Challenges and Tasks for Digital Platform Labor: Focusing on Web-based Platforms and Women's Labor on Platforms	■ Economic, Social & Labor Council ■ KWDI
25	Dec 19, 2019	【26th Gender and Legislation Forum】Changes in Families and Laws	■ Korean Association of Gender and Law ■ KWDI

III.

2020 Major Research Activities

- Research Goals and Directions
- Major Research Projects
- Research Projects

Research Goals and Directions

■ Research Goals

- Seek to redesign gender equality policy amidst paradigm shift
- Analyze gender awareness of the new generation and develop youth policy with a gender perspective
- Set policy agenda based on the socioeconomic effect of gender equality

■ Research Directions

Strengthen the strategies to enhance gender equality for women's labor	○ Analyze the structure of gender discrimination in women's employment and women's labor, and formulate response strategies
	○ Conduct a comprehensive analysis on labor policies from a gender perspective
	○ Analyze economic and social innovation and job prospects for women
	○ Reinforce the foundation for enhancing the effectiveness of work-life balance policies
Change policy frames to tackle gender-based violence after the #MeToo movement	○ Evaluate the polices that tackle violence against women from a gender perspective and formulate new frames
	○ Conduct an in-depth analysis on the patterns of gender-based violence
	○ Improve the system to ensure women's reproduction and health rights
Explore practical policies on gender equality to address low birth rate and aging society	○ Develop gender equal policy agendas to ameliorate low birth rate
	○ Identify policies to create changes in the gendered care sector
	○ Explore gender-sensitive issues and formulate improvement measures to respond to aging society
	○ Develop relevant policies to address the changes in gender role divisions within families, new family organization, etc.
Develop policy agendas to transform the frame of 'gender conflict' discourse and design youth policies	○ Evaluate youth (target) policies from a gender perspective and develop policies to reconstruct gender relations
	○ Establish strategies to respond to gender conflicts of the digital generation
	○ Develop discourses to advance the consensus on gender equality policies
Identify policy agendas to enhance the effectiveness of system for implementing gender equality policies	○ Identify policy agendas to respond to the establishment of new focal departments dedicated to gender equality in major ministries
	○ Advance gender mainstreaming in policies through gender governance
	○ Expand the production of baseline data to drive gender equality policies
Incorporate gender equality issues in the agendas for international development and cooperation	○ Identify pioneering global agendas on gender equality
	○ Analyze ODA projects from a gender perspective

Major Research Projects

Number	Project Name	Project Manager
1	A Study on Sexual Harassment in the Workplace and the Measures for Institutional Improvement	Miyoung Gu, Research Fellow
	■ Identify the status and problems of sexual harassment in the workplace, as well as the limitations of the current legislative system regarding the prevention and relief of sexist harassment, and thereby suggest legal measures to improve the system	
2	A Study on the Limitations of Protective Discourse in Policies that Tackle Gender-based Violence and Future Policy Directions	Jeong-hye Kim, Research Fellow
	■ Analyze the problems of protective discourse on women in policies that tackle gender-based violence, and identify the impact and limitations of those policies that put an emphasis on protecting "vulnerable women", and thereby present the future policy direction towards reducing gender-based violence	
3	A Study on the Mid- and Long-term Strategies for Gender Budgeting Analysis and Evaluation Projects	
	[3-1] A Study on the Links between Gender Budgeting and the National Fiscal Management Plan	Sun-Joo Cho, Senior Research Fellow
	■ Conducive to the second year phase of the 「Research on the Mid- and Long-term Measures to Improve Major Fiscal Systems from a Gender Perspective」, identify specific implementation tasks and methods for linking gender budgeting with the national fiscal management plan in terms of both formality and contents, thereby ensuring that the direction of the national fiscal management explicitly includes the elimination of gender inequality and promotion of gender equality	
	[3-2] Ways to Link Key Project Assessment Systems to Gender Budgeting (II)	Hyo-Joo Kim, Associate Research Fellow
	■ Through the theoretical discussions on why key project assessment systems and gender budgeting should be linked, present specific empirical data on the ways to link the two systems, explore the expected benefits of such linkage, and thereby promote the linkage between the two systems	
4	Sectoral Developing Strategy to Reduce Gender Gap in the Labor Market (III): Focusing on the Gender Segregation of Majors	Seon Mee Shin, Senior Research Fellow
	■ Review the balance between women's equal rights to work and policies for ensuring women's equal opportunities, and propose tasks to address blind spots in policies, by analyzing if gender segregation in university majors leads to gender gaps in employment rates, segregation in occupations, and gender pay gaps for youth who are in the early stage of their career development	
5	A Study on the Awareness and Attitude towards Gender Equality Among Adolescents from a Peer Culture Perspective (I): Comparison on the Gaps in Gender Awareness and Peer Culture between Male and Female Adolescents	Yunjeong Choi, Associate Research Fellow
	■ Analyze the structure of gender awareness and gender conflicts by specifically identifying factors such as gender role awareness, gender discrimination, gender issues, and gender conflicts among adolescents. Compare the trends in peer culture among adolescents between gender, and thereby analyze their implications and impacts on gender conflicts and gender role stereotypes	

Research Projects

Gender Mainstreaming

Number	Project Name	Project Manager
1	A Diagnosis of Gender Equality Competencies in Government Officials and Policy Measures: Focusing on High-ranking Government Officials	Dool-Soon Kim, Research Fellow
2	Gender-sensitive Analysis of Key National Agendas and Improvement Plans(II): Revitalizing the Social Economy	Ki Taek Jeon, Senior Research Fellow

Family-Low Fertility

Number	Project Name	Project Manager
1	A Study on the Family-related Laws·Systems to Address the Aging Society from a Gender Perspective: Focusing on the Changes in Marital Relations and the Economic Vulnerabilities of the Elderly	Hyo Jean Song, Research Fellow
2	Status of Elderly Care in Family and the Support Plan for Integrated Care in Communities	Gawon Chung, Research Fellow
3	Five Years of Childcare Support System - Evaluation and Improvement Plan	Bok-Soon Park, Research Fellow
4	Paradigm Shift in Low Fertility Policies(II): Reconstructing the Discourse to Address Low Birth Rate	Eun-Ji Kim, Research Fellow

Women's Labor

Number	Project Name	Project Manager
1	Status on the Employment of Women Construction Workers and Policy Measures	Kyung-Hee Kim, Senior Research Fellow
2	An Analysis on the Impact of Affirmative Action on Women's Employment	Nanjue Kim, Associate Research Fellow
3	A Study on Gender Wage Gap according to Changes in Skills	Sung Mi Jung, Associate Research Fellow
4	A Study on Women's Jobs in the Transition to the Digital Era(I): The Future of Women's Work and Jobs	Eunjin Oh, Senior Research Fellow

■ Gender Equality Culture-Education

Number	Project Name	Project Manager
1	Policy Measures for the Social Inclusion of Migrant Women	Yi-Seon Kim, Research Fellow
2	An Analysis of the Role Perception and Performance of Female Proportional Representatives in the National Assembly	Eun Kyung Kim, Research Fellow
3	Research on Improving the Effectiveness of Women-and Family-Related Legal Systems(VIII): Gender-sensitive Improvement Measures for Political Legal System	Seon-young Park, Senior Research Fellow
4	The Promotion of Inter-Korean Exchange and Cooperation on North Korean Women’s Economic Empowerment(II)	Young-Ju Cho, Associate Research Fellow

■ Gender-based Violence-Safety

Number	Project Name	Project Manager
1	A Study on Improving the Effectiveness of Violence Prevention Education: Focusing on Male Participants	Mijeong Lee, Senior Research Fellow

■ Establishment of Basic Data for Gender Equality Promotion Policies

Number	Project Name	Project Manager
1	Operation of Gender Statistics System 2020	Jae-Seon Joo, Research Fellow
2	Women in Korea 2020	Sung Mi Jung, Associate Research Fellow
3	Korean Longitudinal Survey of Women & Families 2020	Jae-Seon Joo, Research Fellow
4	Korean Women Manager Panel 2020	Seunghyun Lee, Associate Research Fellow

■ Gender Equality Promotion Strategies and International Cooperation

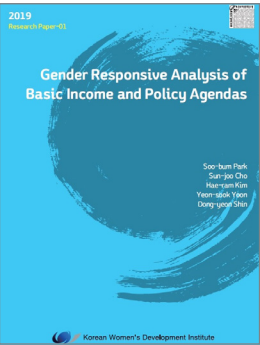
Number	Project Name	Project Manager
1	Projects for International Cooperation	Eun Ha Chang, Associate Research Fellow
2	Strategic Projects for Gender Equality 2020: The Dissemination of Gender Equality Agendas for a Sustainable Society	Yoojin Choi, Research Fellow

IV.

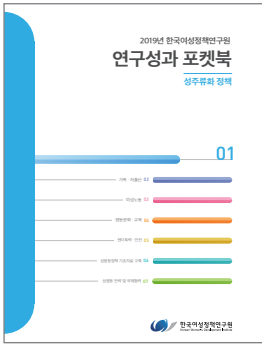
KWDI’s Publications

- Major Publications

Major Publications



Research Reports



Research Achievement
Pocket Book



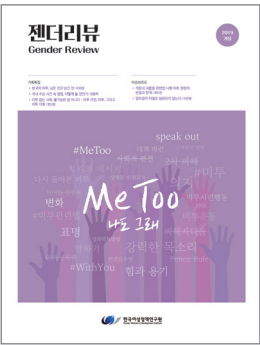
KWDI Brief



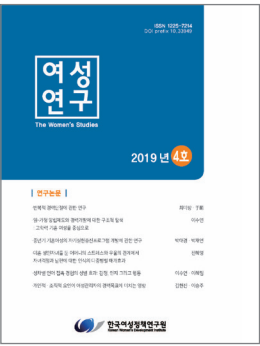
Issue Paper



List of Research
Achievements of Past 5 Years



Gender Review



Women's Studies



101 Examples of Gender
Impact Assessment



Gender Statistics at a
Glance, 2018



Date of Publication	March, 2020
Publisher	Insook Kwon
Publishing Agency	225 Jinheung-rso, Eunpyeonggu, Seoul, Korea, Korean Women's Development Institute TEL. 82-2-3156-7000 eng.kwdi.re.kr
Planning	Center for Strategic Projects for Gender Equality
Design-Printing	Seilfocus



The First Partner for
Gender Equality

www.kwdi.re.kr



KWDI

Korean Women's Development Institute

225 Jinheung-ro, Eunpyeonggu, Seoul, 03367, Korea

TEL. 82-2-3156-7000 **FAX.** 82-2-3156-7007